

PROPOSALS FOR PRESCRIBED ALTERATIONS OTHER THAN FOUNDATION PROPOSALS: Information to be included in a complete proposal

St.ANDREW'S CE PRIMARY SCHOOL (Dearnley)- GOVERNING BODY PROPOSAL TO CHANGE THE AGE RANGE OF THE SCHOOL TO ADD A NURSERY CLASS

Extract of Part 1 of Schedule 3 and Part 1 of Schedule 5 to The School Organisation (Prescribed Alterations to Maintained Schools)(England) Regulations 2007 (as amended):

In respect of a Governing Body Proposal: School and governing body's details

1. The name, address and category of the school for which the governing body are publishing the proposals.

St.Andrew's Church of England Primary School (Dearnley)
Union Road,
Rochdale,
OL12 9QA

Voluntary Controlled School- Rochdale Local Authority

Implementation and any proposed stages for implementation

2. The date on which the proposals are planned to be implemented, and if they are to be implemented in stages, a description of what is planned for each stage, and the number of stages intended and the dates of each stage.

1st September 2104

Objections and comments

3. A statement explaining the procedure for making representations, including –
 - (a) the date prescribed in accordance with paragraph 29 of Schedule 3 (GB proposals)/Schedule 5 (LA proposals) of The School Organisation (Prescribed Alterations to Maintained Schools) (England) Regulations 2007 (as amended), by which objections or comments should be sent to the local education authority; and
 - (b) the address of the authority to which objections or comments should be sent.

Respondents can make their views known by e-mail, or in writing, to Rochdale Local Authority at the address below. There is an open Drop-In Session between 3.30 and 5.30pm on 16th July where interested parties can ask questions or make comments. The closing date for responses is midnight on 16th August 2013. Copies of all documents can be found on the Council website at: <http://consultations.rochdale.gov.uk/research/standrews-1>

Comments should be sent to dawn.jennings@rochdale.gov.uk or in writing to Dawn Jennings, School Support Officer, Rochdale Metropolitan Borough Council, Early Help & Schools, Floor 4, Number One Riverside, Smith Street, ROCHDALE OL16 1XU.

Alteration description

4. A description of the proposed alteration and in the case of special school proposals, a description of the current special needs provision.

To change the age range of the school from 4-11 to 3-11 with the addition of a 26fte nursery class. This proposal is linked to the proposed enlargement of the school published by the Local Authority.

School capacity

5.—(1) Where the alteration is an alteration falling within any of paragraphs 1 to 4, 8, 9 and 12-14 of Schedule 2 (GB proposals)/paragraphs 1-4, 7, 8, 18, 19 and 21 of Schedule 4 (LA proposals) to The School Organisation (Prescribed Alterations to Maintained Schools) (England) Regulations 2007 (as amended), the proposals must also include –

- (a) details of the current capacity of the school and, where the proposals will alter the capacity of the school, the proposed capacity of the school after the alteration;

The current capacity is 210 places. The new capacity will be 315 places.

- (b) details of the current number of pupils admitted to the school in each relevant age group, and where this number is to change, the proposed number of pupils to be admitted in each relevant age group in the first school year in which the proposals will have been implemented;

The current admission number is 30. The admission number will be 45.

- (c) where it is intended that proposals should be implemented in stages, the number of pupils to be admitted to the school in the first school year in which each stage will have been implemented;

N/A

- (d) where the number of pupils in any relevant age group is lower than the indicated admission number for that relevant age group a statement to this effect and details of the indicated admission number in question.

N/A

(2) Where the alteration is an alteration falling within any of paragraphs 1, 2, 9, 12 and 13 of Schedule 2 (GB proposals) /paragraphs 1, 2, 8, 18 and 19 of Schedule 4 (LA proposals) to The School Organisation (Prescribed Alterations to Maintained Schools) (England) Regulations 2007 (as amended), a statement of the number of pupils at the school at the time of the publication of the proposals.

Number On Roll as at May 2013 census= 213

Implementation

6. Where the proposals relate to a foundation or voluntary controlled school a statement as to whether the proposals are to be implemented by the local education authority or by the governing body, and, if the proposals are to be implemented by both, a statement as to the extent to which they are to be implemented by each body.

The proposals for the change in age range to add a nursery class will be implemented by the Governing Body. The linked proposal to enlarge the school will be implemented by the Local Authority.

Additional Site

7.—(1) A statement as to whether any new or additional site will be required if proposals are implemented and if so the location of the site if the school is to occupy a split site.

The proposals do not require the acquisition of new or additional site area.

(2) Where proposals relate to a foundation or voluntary school a statement as to who will provide any additional site required, together with details of the tenure (freehold or leasehold) on which the site of the school will be held, and if the site is to be held on a lease, details of the proposed lease.

N/A

Changes in boarding arrangements

8.—(1) Where the proposals are for the introduction or removal of boarding provision, or the alteration of existing boarding provision such as is mentioned in paragraph 8 or 21 of Schedule 2 (GB proposals)/7 or 14 of Schedule 4 to The School Organisation (Prescribed Alterations to Maintained Schools) (England) Regulations 2007 (as amended) –

- (a) the number of pupils for whom it is intended that boarding provision will be made if the proposals are approved;

N/A

- (b) the arrangements for safeguarding the welfare of children at the school;

N/A

- (c) the current number of pupils for whom boarding provision can be made and a description of the boarding provision; and

N/A

- (d) except where the proposals are to introduce boarding provision, a description of the existing boarding provision.

N/A

(2) Where the proposals are for the removal of boarding provisions or an alteration to reduce boarding provision such as is mentioned in paragraph 8 or 21 of Schedule 2 (GB proposals)/7 or 14 of Schedule 4 (LA proposals) to The School Organisation (Prescribed Alterations to Maintained Schools) (England) Regulations 2007 (as amended) –

- (a) the number of pupils for whom boarding provision will be removed if the proposals are approved; and

N/A

- (b) a statement as to the use to which the former boarding accommodation will be put if the proposals are approved.

N/A

Transfer to new site

9. Where the proposals are to transfer a school to a new site the following information–

- (a) the location of the proposed site (including details of whether the school is to occupy a single or split site), and including where appropriate the postal address;

N/A

- (b) the distance between the proposed and current site;

N/A

- (c) the reason for the choice of proposed site;

N/A

- (d) the accessibility of the proposed site or sites;

N/A

- (e) the proposed arrangements for transport of pupils to the school on its new site; and

N/A

- (f) a statement about other sustainable transport alternatives where pupils are not using transport provided, and how car use in the school area will be discouraged.

N/A

Objectives

10. The objectives of the proposals.

The objective of the proposal is to provide nursery education for 26 full-time equivalent children aged for 3-4 from September 2014. This provision will contribute to the Local Authority's Early Help agenda, in a part of the borough where levels of deprivation are increasing.

The objectives and benefits to the school and children of the Nursery Class will be:

- To facilitate better transition for the children. The school currently takes from a number of different settings which does not allow for efficient transfer of information and can lead to social and emotional difficulties when settling in to their new school. This year's cohort came from 13 different nurseries/childcare providers.
- Early identification of vulnerable groups. This will mean that the needs of new children can be identified as early as possible.
- Consistent baseline data. This will improve standards and outcomes for children because time saved on transition logistics will be spent on providing for their needs.
- There will be continuity of provision which will reflect the ethos and culture of the school.
- Current parents have expressed as desire for a nursery on the premises (ref. parent surveys 2010 and 2011).
- Developing strong and effective parental links from the earliest possible opportunity.
- Standards throughout school will be raised because older children will have opportunities to interact with younger children.
- Provision for Reception pupils would be enhanced, e.g. outdoor provision.
- Creation of links with other providers that are facilitating the new two year old entitlement.
- Ease of access for families who already know and trust the school.
- Opportunities for existing staff to enhance CPD.

The objective of the linked proposal published by the Local Authority is to enlarge the school to ensure that there are sufficient school places for all children who want them.

Consultation

11. Evidence of the consultation before the proposals were published including—

- (a) a list of persons who were consulted;
- (b) minutes of all public consultation meetings;
- (c) the views of the persons consulted;
- (d) a statement to the effect that all applicable statutory requirements in relation to the proposals to consult were complied with; and
- (e) copies of all consultation documents and a statement on how these documents were made available.

The attached Documents set out the evidence of consultation prior to the publication of statutory proposals as follows:

- Document One: List of persons consulted
- Document Two: Consultation Documents
- Document Three: Views of Respondants (including the Open Drop-In Session)
- Document Four: Cabinet Report of 1st July 2013
- Document Five: Governing Body report 2nd July 2013
- Document Six: Public Notices

The proposals to establish a new nursery class (Governing Body Proposals) and proposals to enlarge the school (Local Authority Proposals) are linked, and the Local Authority undertook consultation on both proposals at the same time.

The Governing Body and the Local Authority have complied with the statutory requirements in relation to consultation before publication of these proposals.

The consultation letter was sent to parents, staff and governors of the school by paper copy. Copies were sent electronically to all other consultees as follows: Headteachers and Governing Bodies of schools in Pennines Township, Secretaries of Recognised Trades Unions, neighbouring Local Authorities, Salford and Manchester Diocesan Authorities, MP for Rochdale, Pennines Township Councillors, Private and Voluntary Early Years Providers, Rochdale Local Authority and Sure Start, and St. Andrew's Parochial Church Council. All documents were available on the Council website at: <http://consultations.rochdale.gov.uk/research/standrews/>

The Headteacher's report to the governing body at the end of the consultation summarised the responses received, the majority of which were in favour of both the new nursery class and the enlargement of the school. The report gave a commentary on the views put forward by respondents, and in particular where concerns were expressed about the proposals, or indeed opposition to the proposals. The Governing Body were able to see the responses, which were included in the Headteacher's report, before deciding to proceed to publish the proposals.

Project costs

12. A statement of the estimated total capital cost of the proposals and the breakdown of the costs that are to be met by the governing body, the local education authority, and any other party.

The estimated cost of the total project is estimated to be £1.1million for all building works, including the provision of space for the proposed Nursery Class, if approved.

13. A copy of confirmation from the Secretary of State, local education authority and the Learning and Skills Council for England (as the case may be) that funds will be made available (including costs to cover any necessary site purchase).

The Local Authority confirms that the capital costs for the implementation of the new nursery proposals will be met through the Authority's capital programmes for 2013-14 if the proposal is approved by Cabinet.

Age range

14. Where the proposals relate to a change in age range, the current age range for the school.

The current age range of the school is 4-11. The proposal is to change the age range to 3-11.

Early years provision

15. Where the proposals are to alter the lower age limit of a mainstream school so that it provides for pupils aged between 2 and 5—

- (a) details of the early years provision, including the number of full-time and part-time pupils, the number and length of sessions in each week, and the services for disabled children that will be offered;

It is anticipated that the proposed (26 full-time equivalent) nursery class would operate each day (Monday to Friday) during term time. Each session would usually last for three hours. Parents will be allowed to access, free of charge, up to 15 hours each week (5 three hour sessions), morning, afternoon or all day. Extra sessions will be available for a charge per session.

- (b) how the school will integrate the early years provision with childcare services and how the proposals are consistent with the integration of early years provision for childcare;

It is not intended, as an integral part of this proposal, to offer care other than during the standard education nursery sessions. Were the change of age range to be approved, the pupils will be taught in the EYFS unit.

(c) evidence of parental demand for additional provision of early years provision;

Through the consultation process parents and others were asked if they would support the establishment of a Nursery Class, all of the 46 parents responding indicating their support.

(d) assessment of capacity, quality and sustainability of provision in schools and in establishments other than schools who deliver the Early Years Foundation Stage within 3 miles of the school; and

The Local Authority's Childcare Sufficiency Assessment for 2013 indicates that, overall, in Wardle and West Littleborough Ward (the location of the school) there are currently just enough places to meet the free entitlement for 3-4 year olds, and the take up of entitlement places is high. It should be noted that the adjacent Smallbridge and Firgrove Ward has a shortage of places for 3-4 year olds, and a low take up rate. Littleborough Lakeside clearly has more places than currently eligible children, with not all of the eligible children taking up their entitlement. One of the schools plans to add 8 part-time places to their existing nursery class. Taken across the three wards there is an overall shortage of places, as well as about 90% take up of the entitlement.

WARD	No. of Eligible 3-4 Year Olds	Places	Coverage %	No. taking free entitlement	% taking free entitlement
Wardle & West Littleborough	168	172	102%	185	110%
Smallbridge & Firgrove	389	244	62.7%	304	78.1%
Littleborough Lakeside	201	280	140%	187	93%
Totals	758	696	91.8%	676	89%

Additional factors that support an increase in the number of places are that the child population is growing as evidenced by the need for additional Reception Class places in future years, and the extension of the free 15 hours entitlement to 2 year olds will mean that more nursery places will be needed in the future. The recommendation in the Childcare Sufficiency Assessment for Wardle & West Littleborough and Smallbridge & Firgrove Wards is to increase the number of providers offering free entitlement.

(e) reasons why such schools and establishments who have spare capacity cannot make provision for any forecast increase in the number of such provision.

There has been an increase in the number of children born in this part of the township, resulting in the need for additional Reception Class places. The figures above are based on the current number of eligible 3-4 year olds and does not take account of the increased number of children in subsequent years. The extension of the free entitlement to 2 year olds will also mean that more nursery places will be needed in the next few years.

Changes to sixth form provision

16. (a) Where the proposals are to alter the upper age limit of the school so that the school provides sixth form education or additional sixth form education, a statement of how the proposals will—

- (i) improve the educational or training achievements;
- (ii) increase participation in education or training; and
- (iii) expand the range of educational or training opportunities for 16-19 year olds in the area;

N/A

(b) A statement as to how the new places will fit within the 16-19 organisation in an area;

N/A

(c) Evidence —

- (i) of the local collaboration in drawing up the proposals; and
- (ii) that the proposals are likely to lead to higher standards and better progression at the school;

N/A

(d) The proposed number of sixth form places to be provided.

N/A

17. Where the proposals are to alter the upper age limit of the school so that the school ceases to provide sixth form education, a statement of the effect on the supply of 16-19 places in the area.

N/A

Special educational needs

18. Where the proposals are to establish or change provision for special educational needs—

- (a) a description of the proposed types of learning difficulties in respect of which education will be provided and, where provision for special educational needs already exists, the current type of provision;

N/A

- (b) any additional specialist features will be provided;

N/A

- (c) the proposed numbers of pupils for which the provision is to be made;

N/A

- (d) details of how the provision will be funded;

N/A

- (e) a statement as to whether the education will be provided for children with special educational needs who are not registered pupils at the school to which the proposals relate;

N/A

- (f) a statement as to whether the expenses of the provision will be met from the school's delegated budget;

N/A

- (g) the location of the provision if it is not to be established on the existing site of the school;

N/A

- (h) where the provision will replace existing educational provision for children with special educational needs, a statement as to how the local education authority believes that the new provision is likely to lead to improvement in the standard, quality and range of the educational provision for such children; and

N/A

- (i) the number of places reserved for children with special educational needs, and where this number is to change, the proposed number of such places.

N/A

19. Where the proposals are to discontinue provision for special educational needs—

(a) details of alternative provision for pupils for whom the provision is currently made;

N/A

(b) details of the number of pupils for whom provision is made that is recognised by the local education authority as reserved for children with special educational needs during each of the 4 school years preceding the current school year;

N/A

(c) details of provision made outside the area of the local education authority for pupils whose needs will not be able to be met in the area of the authority as a result of the discontinuance of the provision; and

N/A

(d) a statement as to how the proposer believes that the proposals are likely to lead to improvement in the standard, quality and range of the educational provision for such children.

N/A

20. Where the proposals will lead to alternative provision for children with special educational needs, as a result of the establishment, alteration or discontinuance of existing provision, the specific educational benefits that will flow from the proposals in terms of—

(a) improved access to education and associated services including the curriculum, wider school activities, facilities and equipment with reference to the local education authority's Accessibility Strategy;

(b) improved access to specialist staff, both educational and other professionals, including any external support and outreach services;

(c) improved access to suitable accommodation; and

(d) improved supply of suitable places.

N/A

Sex of pupils

21. Where the proposals are to make an alteration to provide that a school which was an establishment which admitted pupils of one sex only becomes an establishment which admits pupils of both sexes—

(a) details of the likely effect which the alteration will have on the balance of the provision of single sex-education in the area;

N/A

(b) evidence of local demand for single-sex education; and

N/A

(c) details of any transitional period which the body making the proposals wishes specified in a transitional exemption order (within the meaning of section 27 of the Sex Discrimination Act 1975).

N/A

22. Where the proposals are to make an alteration to a school to provide that a school which was an establishment which admitted pupils of both sexes becomes an establishment which admits pupils of one sex only—

(a) details of the likely effect which the alteration will have on the balance of the provision of single-sex education in the area; and

N/A

(b) evidence of local demand for single-sex education.

N/A

Extended services

23. If the proposed alterations affect the provision of the school's extended services, details of the current extended services the school is offering and details of any proposed change as a result of the alterations.

N/A

Need or demand for additional places

24. If the proposals involve adding places—

(a) a statement and supporting evidence of the need or demand for the particular places in the area;

See Linked proposal published by the Local Authority

(b) where the school has a religious character, a statement and supporting evidence of the demand in the area for education in accordance with the tenets of the religion or religious denomination;

There are no nursery class places in any of the Church of England primary schools in the area.

See Linked proposal published by the Local Authority.

(c) where the school adheres to a particular philosophy, evidence of the demand for education in accordance with the philosophy in question and any associated change to the admission arrangements for the school.

N/A

25. If the proposals involve removing places—

(a) a statement and supporting evidence of the reasons for the removal, including an assessment of the impact on parental choice; and

N/A

(b) a statement on the local capacity to accommodate displaced pupils.

N/A

Expansion of successful and popular schools

25A. (1) Proposals must include a statement of whether the proposer considers that the presumption for the expansion of successful and popular schools should apply, and where the governing body consider the presumption applies, evidence to support this.

(2) Sub-paragraph (1) applies to expansion proposals in respect of primary and secondary schools, (except for grammar schools), i.e. falling within:

(a) (for proposals published by the governing body) paragraph 1 of Part 1 to Schedule 2 or paragraph 12 of Part 2 to Schedule 2;

(b) (for proposals published by the LA) paragraph 1 of Part 1 to Schedule 4 or 18 of Part 4 to Schedule 4 of the School Organisation (Prescribed Alterations to Maintained Schools) (England) Regulations 2007 (as amended).

N/A

CONSULTATION DOCUMENTATION & REPORTS

DOCUMENT ONE- LIST OF PERSONS CONSULTED
--

DOCUMENT TWO - CONSULTATION DOCUMENTS
--

DOCUMENT THREE- VIEWS OF RESPONDANTS

DOCUMENT FOUR- Cabinet Report 1st July 2013
--

DOCUMENT FIVE - Governing Body Report 2nd July 2013
--

DOCUMENT SIX - PUBLISHED NOTICES

DOCUMENT ONE- LIST OF PERSONS CONSULTED

Parents, Staff and pupils of St.Andrew's CE Primary School (Dearnley)

St.Andrew's Parochial Church Council

Headteachers/Governing Bodies of all maintained Schools in Pennines Township:

Littleborough CP, Stansfield Hall CE/Methodist (VC), Holy Trinity CE (VA), Smithy Bridge F (Foundation), St.James CE (F), Moorhouse CP, Newhey CP, Milnrow Parish CE (VA), St.Thomas' CE Newhey (VA), Crossgates (F), St.Mary's RC Littleborough (VA), Kentmere CP, Hamer CP, Alice Ingham RC (VA), Hollingworth Business & Enterprise College (F), Wardle High School (F)

Secretaries of Recognised Trades Unions:

maureen.howarth@rochdale.gov.uk christinepalmer340@hotmail.com
head@littleheatonce.rochdale.sch.uk head@spotland.rochdale.sch.uk mark.baker00@btinternet.com
n.wigmore@executive.nut.org.uk secretary@rochdale.nut.org.uk

Diocesan Authorities:

Manchester Anglican Diocesan Authority MalcolmFinney@manchester.anglican.org
Salford Roman Catholic Diocesan Authority Kevin.Quigley@dioceseofsalford.org.uk

MP For Rochdale:

Simon Danczuk MP

Rochdale Local Authority and Sure Start:

gladys.rhodes@rochdale.gov.uk ; sandra.bowness@rochdale.gov.uk ;
sue.eastwood@rochdale.gov.uk ; laura.beesley@rochdale.gov.uk ;
bob.adams@rochdale.gov.uk chris.swift@rochdale.gov.uk

Voluntary & Private Early Years Providers:

First Steps Private day Nursery, Happy Jacks Day Nursery, Little Gems, Seeros daycare Nursery, Teddy Bear Nursery, The Apple Tree Private Day Nursery, The Old Library, Tinkerbell private Nursery, Fairy Feet, Heybrook Children Centre, Scamps Pre-School and Nursery, Wardle Childcare Partnership, Crossgates Primary School, Healey Primary School, Springside Play4All, Jellybeans Out of School Club Holy Trinity, Jellybeans Out Of School Club St.Mary's, St.Patricks RCP

Pennines Township Councillors:

john.hartley@rochdale.gov.uk allen.brett@rochdale.gov.uk andrew.kelly@rochdale.gov.uk
amna.mir@rochdale.gov.uk Stephanie.Mills@rochdale.gov.uk Martin.Rodgers@Rochdale.Gov.Uk
martin.burke@rochdale.gov.uk Ann.Stott2@Rochdale.Gov.Uk Aftab.Hussain2@Rochdale.Gov.Uk
ashley.dearnley@rochdale.gov.uk robert.clegg@rochdale.gov.uk
janet.darnbrough@rochdale.gov.uk

Neighbouring Local Authorities

Oldham MBC, Lancashire CC, Calderdale MBC.

DOCUMENT TWO - CONSULTATION DOCUMENTS

1. Consultation Letter to all Parties
2. Consultation Document

1. CONSULTATION LETTER TO ALL PARTIES

To: Parents, Pupils, Staff of St Andrew's CE School, Headteachers and Governing Bodies of Pennines Township Schools, Secretaries of Recognised Trades Unions, neighbouring Local Authorities, Diocesan Authorities, MP for Rochdale, Pennines Township Councillors, Private and Voluntary Early Years Providers, St.Andrew's PCC.

Dear Sir/Madam,

PROPOSED ESTABLISHMENT OF A NURSERY CLASS and SIGNIFICANT ENLARGEMENT AT St. ANDREW'S CE SCHOOL, DEARNLEY.

The reason for this letter is to tell you that the Local Authority is considering setting up a Nursery Class at St.Andrew's CE Dearnley following a request by the Governing Body. The Local Authority also wants to increase the intake at the school to 45 in each new year group from September 2014. Before it takes the decision to publish legal proposals, the Local Authority wants to hear your views about the proposals.

What is being proposed?

The proposals are: to set up a new nursery class for 26 full-time equivalent children; and to increase the intake at the school to 45 children in each new Reception Year from September 2014. This is a change in the age range of the school from 4-11 to 3-11, and also a significant enlargement of the school.

Why does the Local Authority want to do this?

The governing body of St.Andrew's CE has asked the Local Authority to consider setting up a Nursery Class at the school. In recent years a number of parents have asked whether the school could provide a nursery class. This part of the borough is an area of increasing deprivation, and the establishment of a nursery class will help improve outcomes for children in the school. The Local Authority also wants to expand the school to provide a total of 45 places in each new Reception year group from 1st September 2014 because of the increase in the number of children in the Township.

What would happen and when?

The new nursery class would have 26 places available for each of the morning and afternoon sessions. The Admissions criteria will be the standard Local Authority criteria for admission to a nursery class. The nursery would be staffed by a Teacher and a Teaching Assistant.

Continued overleaf....

.....

CONSULTATION REPLY SLIP- PLEASE SEE OVERLEAF

..... Continued.....

The 15 extra places for Reception intakes would be in accordance with the admission policy of the school. The school will have two classes in Reception year group, and then three classes of up to 30 children in Key Stage 1 (Year 1 & 2), with a similar organisation as children progress in to Key Stage 2. To provide the Nursery Class and extra school places, additional teaching and other accommodation will be needed at the school. A feasibility has been undertaken, and capital funding will be provided through Rochdale Local Authority.

Further information & Consultation

The full consultation paper and the report to the Executive Member for Children Schools and Families are available on the Local Authority Website at <http://consultations.rochdale.gov.uk/research/standrews/>. There is a 6 week consultation period starting on 19th April 2013. This ends at midnight on 17th June 2013.

Who takes the decision?

After the close of the consultation, Cabinet will consider all responses received. It will decide whether to publish statutory proposals to open a nursery class and increase the size of the school. If Cabinet decides to publish proposals, at the end of a further 6 week representation period the Local Authority will then make the final decision in accordance with Statutory Guidance and Regulations.

How can I make my views known?

You can make your views known by completing the reply slip below, or by writing to the Local Authority by letter or e-mail at the address below. If you want to ask questions about the proposals, a meeting has been arranged as follows-

Open Drop-in for Parents & carers & interested parties	Starts 3.00pm until 5.00pm on Thursday 2nd May 2013	School hall
--	---	-------------

The closing date for comments is midnight on 17th June 2013

Comments should be sent to dawn.jennings@rochdale.gov.uk, or in writing to Dawn Jennings, School Support Officer, Rochdale Metropolitan Borough Council, Schools Service, Number One Riverside, Smith Street ROCHDALE OL16 1XU

Yours Faithfully



Sandra Bowness

Service Director
Support for Learning

..... cut here

St.Andrew's CE School- CONSULTATION REPLY

I SUPPORT THE PROPOSAL TO ADD A NURSERY CLASS TO THE SCHOOL	YES	
	NO	
I SUPPORT THE PROPOSAL TO INCREASE THE INTAKE OF THE SCHOOL TO 45	YES	
	NO	
COMMENTS: NAME- CONNECTION TO THE SCHOOL:-		

Please return this slip to the school office- St.Andrew's CE, Dearnley, or to Dawn Jennings, Schools Service, Number One Riverside, Smith Street ROCHDALE OL16 1XU

2. CONSULTATION DOCUMENT APRIL 2013

<p><u>St.ANDREWS CE PRIMARY SCHOOL, DEARNLEY,</u> <u>PROPOSED ENLARGEMENT AND ADDITION OF A NURSERY CLASS.</u> <u>CONSULTATION DOCUMENT</u> <u>16th April 2013</u></p>

INTRODUCTION

1. The Proposals are to increase the capacity of the school to admit 45 children in each new successive year group from September 2014 and to change the age range of the school to 3-11 to include a Nursery Class.

WHAT IS THE CURRENT AGE RANGE AND SIZE OF THE SCHOOL?

2. The current age range of the school is 4-11, and the Admission Number is 30, with a capacity of 210 places. The school currently has 208 children on roll.

WHAT IS PROPOSED?

3. The proposed age range of the school will be 3-11, and the proposed admission number for each new successive year group will be 45, with a capacity of 315 places. The Nursery Class would have a capacity of 26 Full-time Equivalent (FTE) places.
4. The proposals are put forward by Rochdale Local Authority and if approved would be implemented from 1st September 2014. All relevant information and documentation can be found on the Council website at <http://consultations.rochdale.gov.uk/research/standrews/>

HOW WILL THE NURSERY CLASS BE ORGANISED?

5. The Nursery class would have 26 FTE places, and would be a separate unit within the Foundation Stage. The main features would be:
 - Staffing- 1 Teacher/ 1 Teaching Assistant
 - Daily sessions: 8:45 - 11:45 am; 12:30 - 3:30 pm.
 - Children would be entitled to 15 hours provision, which would be either morning or afternoon sessions.
 - The Curriculum will be the Early Years Foundation Stage which is currently followed in Reception. Nursery children would work alongside Reception children with opportunities for joint work wherever possible.
 - Admission Criteria are the standard local authority admission criteria for admission to a nursery class, a copy of which is on the consultation website. Please note that admission to the Nursery Class does not give priority for admission to the school.
 - Only children aged 3 who will become four in that academic year will be admitted.
 - Children will be a full part of the school and would therefore wear school uniform.
 - There will be no before or after school care offered.

WHAT ARE THE BENEFITS OF A NURSERY CLASS?

6. The benefits to the school and children of the Nursery Class will be:

- To facilitate better transition for the children. The school currently takes from a number of different settings which does not allow for efficient transfer of information and can lead to social and emotional difficulties when settling in to their new school. This year's cohort came from 13 different nurseries/childcare providers.
- Early identification of vulnerable groups. This will mean that the needs of new children can be identified as early as possible.
- Consistent baseline data. This will improve standards and outcomes for children because time saved on transition logistics will be spent on providing for their needs.
- There will be continuity of provision which will reflect the ethos and culture of the school.
- Current parents have expressed as desire for a nursery on the premises (ref. parent surveys 2010 and 2011).
- Developing strong and effective parental links from the earliest possible opportunity.
- Standards throughout school will be raised because older children will have opportunities to interact with younger children.
- Provision for Reception pupils would be enhanced, e.g. outdoor provision.
- Creation of links with other providers that are facilitating the new two year old entitlement.
- Ease of access for families who already know and trust the school.
- Opportunities for existing staff to enhance CPD.

ARE MORE NURSERY PLACES JUSTIFIED?

7. The Local Authority's Childcare Sufficiency Assessment indicates that, overall, in Wardle and West Littleborough Ward there are currently just enough places to meet the free entitlement for 3-4 year olds, and the take up of entitlement places is high. It should be noted that the adjacent Smallbridge and Firgrove Ward has a shortage of places for 3-4 year olds, and a low take up rate.

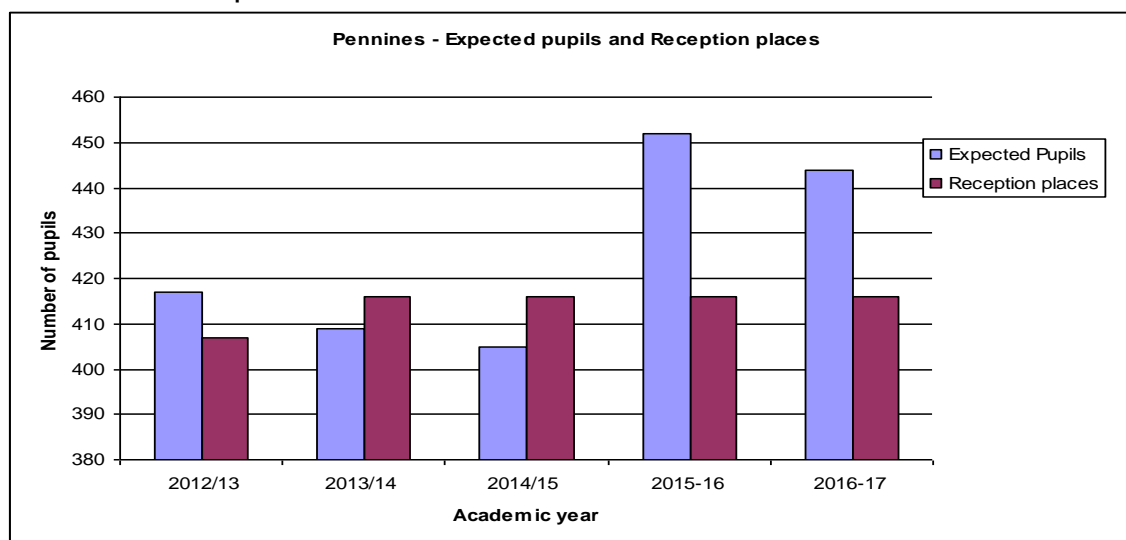
WARD	No. of Eligible 3-4 Year Olds	Places	Coverage %	No. taking free entitlement	% taking free entitlement
Wardle & West Littleborough	168	172	102%	185	110%
Smallbridge & Firgrove	389	244	62.7%	304	78.1%

8. Factors that support an increase in the number of places are that the child population is growing, and the extension of the free 15 hours entitlement to 2 year olds will mean that more places will be needed in the future. The recommendation in the Childcare Sufficiency Assessment for both wards is to increase the number of providers offering free entitlement. The expansion of the school provides a cost-effective and timely opportunity to make more places available in the Township.

WHY ARE MORE MAINSTREAM SCHOOL PLACES NEEDED?

9. The demographic trend for Pennines Township suggests that there are enough places in the Township as a whole for both 2013 and 2014, but more places will be needed in 2015 and 2016. The geography of the Township is such that the pattern of demand

varies across the different localities. A more detailed analysis of birth distribution and current pattern of preferences suggests a need for extra places to address both demographic and an element of preference demand. The graph below shows how many Reception Class places there are now and how many children are expected across the Township as a whole.



School Year	2012/13	2013/14	2014/15	2015/16	2016/17
Expected pupils	417	409	405	452	444
Reception places	407	416	416	416	416
Extra Places Needed	n/a	-7	-11	36	28

10. The table below sets out the birth, place availability and preference situation across the Township in September 2012, together with the position for 2013. For 2014 and 2015 it shows the birth and place availability. That level of detail will not be available until September 2013 but birth data at **Ward level** indicates an increase in demand for 2016 compared to 2015 in Littleborough Lakeside (up by 21 births) and Smallbridge and Firgrove (up by 12 births). However births in Wardle and West Littleborough are down by 8 births and Smallbridge and Milnrow and Newhey by 16 births). The overall position remains that across the township an extra form of entry will be needed to match demographic demand in 2016.

Area	September 2012 Admission				September 2013 Admission				September 2014 Admission			September 2015 Admission		
	Births	Places	First Preferences	Places Offered	Births	Places	Shortfall/surplus	First Preferences	Births	Places	Shortfall/surplus	Births	Places	Shortfall/surplus
Littleborough	123	140	124	130	125	140	+15	121	114	140	+26	123	140	+17
Wardle	40	30	40	30	36	30	-6	32	37	30	-7	41	30	-11
Smithy Bridge	103	90	84	102	88	90	+2	93	98	90	-8	98	90	-8
Milnrow	100	105	86	104	108	105	-3	92	94	105	+11	110	105	-5
Newhey	52	51	68	51	48	51	+3	57	59	51	-8	59	51	-7

11. Cabinet has agreed that, subject to feasibility, 15 additional places should be provided at St. Andrew's to meet the increased local demographic demand for additional school places.

HOW WILL THE PROPOSALS BE FUNDED?

12. The expansion of the school would be through new build, in addition to the additional accommodation already provided this year. The capital funding for the expansion would be met by the Local Authority through Basic Need Capital Grant. Revenue funding for the Nursery Class would be through the Early Years Single Funding Formula, and revenue funding for additional reception pupils in the school will be through the Fair Funding Formula.

WHAT CONSULTATION WILL BE UNDERTAKEN?

13. Consultation on these proposals will be in accordance with statutory guidance. The consultation documents are available on the School Website. The following groups of people and individuals will be consulted:

- * Parents and Carers of children at St. Andrew's CE School, Dearnley
- * Staff at the school
- * St. Andrew's Parochial Church Council
- * Headteachers & Governing Bodies of all Pennines Primary and Secondary Schools
- * Early Years Providers in Pennines Township
- * Secretaries of Recognised Trades Unions
- * Pennines Township Councillors
- * MP for Rochdale
- * Manchester Church of England Diocese
- * Salford Roman Catholic Diocese
- * neighbouring Local Authorities

HOW CAN I MAKE MY VIEWS KNOWN TO THE GOVERNING BODY?

14. An open drop-in session has been arranged for interested parties, to be held on 3.00-5.00 on Thursday 2nd May, at the school. The consultation will take place between 19th April 2013 and midnight on 17th June 2013. Responses to the consultation should be sent to Dawn Jennings, by e-mail at dawn.jennings@rochdale.gov.uk or by post to Dawn Jennings, School Support Officer, Rochdale Metropolitan Borough Council, Schools Service, Number One Riverside, Smith Street ROCHDALE OL16 1XU.

WHAT HAPPENS AFTER THAT?

15. After the close of the consultation period, the Local Authority will consider all responses received, and decide whether or not to publish statutory proposals. If the decision is taken to publish statutory proposals, there would be a further statutory representation period of 6 weeks, after which Rochdale Local Authority would consider the proposals and any responses received. The Local Authority would then decide whether or not to approve the published proposals.

Chris Swift
School Organisation & Development Manager
19th April 2013

DOCUMENT THREE- VIEWS OF RESPONDANTS

The Responses to the Consultation received within the consultation period are attached below and were as follows:

- (i) 46 response forms were returned;
- (ii) 2 Comments made at the Open Drop-In Session held on 2nd May;
- (iii) The Governing Body of St Andrew's CE;
- (iv) There are 5 letters from schools in the area;
- (v) Wardle Childcare Partnership
- (vi) (1 parent letter received to date)
- (vii) The Student Council of the School;
- (viii) Sure Start (in places of the Early Years & Childcare Partnership);
- (ix) Pennines Township Committee; and
- (x) Overview and Scrutiny Committee (27th June).

(i)	<p>Comments from the consultation pro-forma (45 including 2 from 1 parent):</p> <p><i>Respondents in favour of the proposals:</i></p> <p>*By doing these increases, enables every child a good education at St.Andrew's (parent)</p> <p>*I have a younger child and this would definitely benefit us. (parent)</p> <p>*Having a nursery in the school would be great. I have a younger daughter and been looking for a nursery, so it would be a lot easier if the nursery was in the school. (parent)</p> <p>*I support the proposal but do have concern about there not being enough parking. (parent)</p> <p>*I strongly agree with this idea and you should do this. (parent)</p> <p>*the school and children have adapted to the two class intake within Reception this year. I think the school would continue to have the same feel. (parent governor)</p> <p>*Great ideas, excellent opportunity. (volunteer)</p> <p>*I think this would be a fantastic addition to school, should have happened years ago! (parent)</p> <p>*Having a nursery class enables children to become settled before moving into full-time education. More school places needed in order to meet the needs of new housing.(Church Warden)</p> <p>*Go for it. It will be good for everyone. (parent)</p> <p>*A logical step forward for a dynamic school- fulfilling a vital role in our community- much needed. (governor)</p> <p>*I definitely see the need for more child places in local schools so children can go to school close to home- as long as there is funding to make it safely possible with overcrowded classes. (parent)</p> <p>*This would have benefitted me if you had this last year. I think it would be great for other parents. I would like after school clubs as well. (parent)</p> <p>*Excellent + will be the best way forward for St.Andrew's CE School.(Governor)</p> <p>*I think it a very good idea I moved my son from St.Andrew's due to his younger sibling attending xxxxxxxx school Nursery. They are at St.Andrew's now due to it being a better school, I also have another child to be born in May. So I would say yes to a nursery. (parent)</p> <p>*I think both proposals are a brilliant idea that the school and community will benefit greatly from this. (parent)</p> <p>* the main reason I chose St.Andrew's school for my children is because it is small & personal- unlike other schools in the area. (parent)</p> <p>*The nursery would be of great benefit to the area, helping to make the school an integral part of the community. (parent)</p> <p><i>Respondents not in favour of the enlargement</i></p> <p>*I would worry that the "close knit" feeling may be lost if the school grew too big. (parent)</p> <p>*It's not fair to teachers having 45 kids in class they won't be able to teach one on one. (parent)</p> <p>*St.Andrew's is a small school and I would love it to remain that way. (parent)</p> <p>*The main reason I chose St.Andrew's schools for my children is because it is small and personal- unlike other schools in the area. (parent) the same parent also submitted a second response: *A major positive of the school is that it is small and personal- I do not therefore feel the intake should be increased to 45.</p>
-----	--

Analysis of responses: Support the Proposed Nursery Class:						
Parent	Parent Governor	Governor	volunteer	Support staff	Church Warden	Not declared
35 +inc 1 duplicate	1	3	1	4	1	1
Analysis of responses: Support the Proposed Enlargement of the school:						
Parent	Parent Governor	Governor	volunteer	Support staff	Church Warden	Not declared
24	1	3	1	4	1	1
Analysis of responses: Do Not Support the Proposed Enlargement of the school:						
Parent						
11+inc 1 duplicate	-	-	--	-	-	-
<p>Comments from the Open Drop-In Session (2 attendees):</p> <p>(ii) * Quite happy what was said about not expanding class room sizes. Still worried about playground space but will see if this will be a problem when plans are done. More children might need more play space? (parent)</p> <p>*Would like to see plans before I make my mind up, but seems a good idea at present. (parent)</p>						

(iii) **Responses from local Primary Schools:**

Littleborough CP ,

From: Martine Sinker

Sent: 19 April 2013 14:03

On behalf of Governors we are strongly **against increasing pupil numbers at St Andrew's both in Reception and Nursery**. When St Andrew's tried to increase their numbers last year, they had far fewer children than expected. There simply isn't the demand for places in this area. When other schools in the area are not full, it is a waste of time and money to increase the pupil numbers in St Andrews and in fact **works against** local schools. The understanding was clearly that last year's increase in numbers was only to be a temporary arrangement for one year.

- ? The extra class originally was planned to come to Littleborough CPS and yet when St Andrew's requested it very late in the process, they were granted the extra class with no consultation. In the event, the number of children anticipated turned out to be a mistake, as considerably fewer children were admitted.
- ? A very comprehensive survey last year showed the extra numbers of children are not going to be there in the Pennine area. The Pennine cluster had a meeting with Chris Swift which established the same thing. The projection every Pennine Head teacher was given to discuss, **does not warrant an extra class or extra numbers in any Pennine school and this was agreed by the Pennine Cluster.**
- ? **In addition St Andrew's is not oversubscribed.**
- ? **This matter was discussed at Forum and schools strongly protested the misuse of £1.2 million when schools such as Littleborough and Holy Trinity have so much building work. Our school has over one million pounds of priority one building repairs and maintenance and houses 420 pupils. We should have that money to make our school fit for purpose, not wasted on non-existent pupils.**
- ? In addition **the Nursery places are definitely not warranted**. The Nursery in Littleborough is not full and we offer flexible entitlement. We are already in competition with Scamps who occupy premises on our site and provide private provision, and they are not full. The number of children eligible for Nursery places is not enough to warrant an extra 52 place Nursery and we protest in the strongest terms.

Martine Sinker
Headteacher
Littleborough Community Primary School

SMITHY BRIDGE PRIMARY SCHOOL:



Smithy Bridge Primary School

A FOUNDATION PRIMARY SCHOOL

Headteacher: Jane E George, B. Ed, M. Ed
Deputy Headteacher: Helen Johnson, B.A.(Hons), N.P.Q.H.



29.04.13

Consultation regarding the proposed expansion to St Andrews School

The Governors of Smithy Bridge School object to the proposed expansion to St Andrews School for the following reasons.

Nursery

Smithy Bridge School currently has a nursery which is to expand to 60 places from 52 in September. Consultation with Sure Start has already taken place for this. Whilst increasing flexible entitlement is the main purpose of this initiative the actual number of spaces has to increase. This year we currently only have a take up of 48 of those places. It would therefore be hard to justify the opening of another nursery less than a quarter of a mile away.

Increased admission number to YR

Traditionally St Andrews has not been a school which is greatly in demand by parents and was only selected as first choice by 20 families this year. The head teacher of Smithy Bridge has regular requests for parents looking to move their child from St Andrews to Smithy Bridge School and this is the subject of frequent appeals in all age groups. It would therefore seem inappropriate to increase the PAN at St Andrews and would not meet parental choice.

There are currently vacancies in other schools in Littleborough. As long as the significant number of places exist there is not a proven need for more spaces in the area.

There are currently more places in faith schools in Littleborough than in non-faith based schools. It is the experience of the head teacher of Smithy Bridge School that increasing numbers of people of Asian descent who are of the Islamic faith are looking to move to Smithy Bridge School. It would not appear to meet their requirements to increase the number of places in a Church school.

There has been no consultation with head teachers and governing bodies to date to enquire as to which schools could easily increase their PAN, St Andrews appears to have been selected for this purpose at random. This does not seem to be either fair or transparent.

The amount of money to be spent on the proposed expansion is excessive and a proper development of existing schools which appear to have much better learning outcomes and results would probably be cheaper as it would meet both purposes (premises improvement, creation of extra capacity).

Sue Temperley

Mrs Sue Temperley
Chair of Governors (on behalf of the governors of Smithy Bridge School)

Bridgenorth Drive, Smithy Bridge, Littleborough, Lancashire OL15 0DY
Telephone 01706 378083 Fax 01706 376960 Email office@sbs.rochdale.sch.uk



St.James' CE (Foundation) Primary School, Wardle

Our ref: EH/RS

15th May 2013

Dear

I am writing as Chair of Governors and on behalf of the Governing Body of St. James' C.E. Primary School, Wardle, in response to the planned expansion of St Andrew's C.E. Primary School, Dearnley, and the establishment of a Nursery Class at the same school as we do not believe that the need for such an expansion has been proven.

St Andrew's is currently undersubscribed. As a one form entry primary school its capacity would be 210 pupils, this year it has a reception PAN of 45 taking the school capacity to 225, but according to the most recent available data (Feb 28th 2013) there were only 187 pupils on roll. The proposed reception intake numbers for 2013 again show that the school is undersubscribed.

Parental preference does not support the proposed expansion as St Andrew's was named as 'first choice' by only 20 families for admission in Sept 2013.

The need for additional places is neither established nor proven. Estimates for admissions to Pennine schools have been inaccurate for the last two years when predicted pressure on places has not materialised.

There has been inadequate investigation into capacity and demand in other local primary schools. No meetings or discussions have taken place to establish whether other schools could or would like to increase their capacity.

At Pennine Headteacher's Cluster Meetings, headteachers were assured that the increase in places at St. Andrews was for one year only. This was reinforced by data produced by the LA Officer.

There are currently 140 reception places in faith schools in the Wardle/ Smithybridge/ Littleborough area and only 120 places in community schools. Changing demographics of Wardle High School and Smithybridge Primary School demonstrates an increase of children of Asian heritage. To expand St. Andrew's would be to disadvantage parents wanting non-faith school places.

The effect on other local primary schools has not been properly considered.

With regard to the establishment of a Nursery Class, again I do not believe that the need has been proven.

Smithybridge Nursery has already consulted with Sure Start and from September 2013 will have 60 places compared to its current 48.

Neither Scamps nor Littleborough Primary School Nurseries are full for September 2013 and Stansfield Hall has closed its pre-school provision due to lack of demand.

Further additional places will be available at the new Private Nursery Provision which is to be built on the old Birch Hill Hospital site as part of the agreement with the housing developers.

I trust that you will review the proposal taking account of the responses you receive and inform me of progress towards your decision prior to it being finalised.

Yours sincerely E Hardaker **Chair of Governors**

c.c. Pennine Township Committee



HOLY TRINITY C.E. PRIMARY SCHOOL

Victoria Street, Littleborough, Lancashire, OL15 9DB
Tel/Fax: (01706) 378061 email head@holytrinityce.rochdale.sch.uk

Headteacher: Mr M A Kenyon - B.A., P.G.C.E.



Dawn Jennings
School Service
Number One Riverside
Smith Street
Rochdale
OL16 1XU

20th May 2013.

Dear Dawn Jennings,

I am writing as Chair of Governors and on behalf of the Governing Body of Holy Trinity C.E. Primary School, Littleborough, in response to the planned expansion of St Andrew's C.E. Primary School, Dearnley, and the establishment of a Nursery Class at the same school as we do not believe that the need for such an expansion has been proven.

St Andrew's is currently undersubscribed. As a one form entry primary school its capacity would be 210 pupils, this year it has a reception PAN of 45 taking the school capacity to 225, but according to the most recent available data (Feb 28th 2013) there were only 187 pupils on roll. The proposed reception intake numbers for 2013 again show that the school is undersubscribed.

Parental preference does not support the proposed expansion as St Andrew's was named as 'first choice' by only 20 families for admission in Sept 2013.

The need for additional places is neither established nor proven. Estimates for admissions to Pennine schools have been inaccurate for the last two years when predicted pressure on places has not materialised.

There has been inadequate investigation into capacity and demand in other local primary schools. No meetings or discussions have taken place to establish whether other schools could or would like to increase their capacity.

At Pennine Headteacher's Cluster Meetings, headteachers were assured that the increase in places at St. Andrews was for one year only. This was reinforced by data produced by the LA Officer.

Continued:

There are currently 140 reception places in faith schools in the Wardle/ Smithybridge/ Littleborough area and only 120 places in community schools. Changing demographics of Wardle High School and Smithybridge Primary School demonstrates an increase of children of Asian heritage. To expand St. Andrew's would be to disadvantage parents wanting non-faith school places.

The effect on other local primary schools has not been properly considered.

With regard to the establishment of a Nursery Class, again I do not believe that the need has been proven.

Smithybridge Nursery has already consulted with Sure Start and from September 2013 will have 60 places compared to its current 48.

Neither Scamps nor Littleborough Primary School Nurseries are full for September 2013 and Stansfield Hall has closed its pre-school provision due to lack of demand.

Further additional places will be available at the new Private Nursery Provision which is to be built on the old Birch Hill Hospital site as part of the agreement with the housing developers.

I trust that you will review the proposal taking account of the responses you receive and inform me of progress towards your decision prior to it being finalised.

Yours sincerely

 (MRS)

S Scott
Chair of Governors



We do not support the proposal to the expansion of St Andrew's Primary CE Primary School, Dearnley for the following reasons -

From the figures provided by the Local Authority -

- 1 St Andrew's is undersubscribed this year (13/14).
- 2 Parental preference does not support the expansion.
- 2 There are vacancies in other local primary schools for September 2013.
- 3 The need for extra places is not established or proven; estimates for Pennine admissions have been incorrect year on year.
- 4 The effect on other primary schools has not been properly considered, even if they are outside the 2 mile radius there may still be a knock on effect that needs to be looked at in detail.
- 5 To go ahead with the expansion of St Andrew's is an unjustified use of public money especially at a time when other primary schools require urgent repair and maintenance to continue to maintain their already proven 'high standards'
- 6 Chris Swift assured our Headteacher and Chair of Governors that the temporary allocation of extra places at St Andrews in 2012 was for 1 year only and he demonstrated that point with data.
- 7 There has been inadequate investigation into capacity and demand in other local primary schools (no meetings with other schools to discover whether they can increase their capacity).
- 8 We question the need for a nursery place in a school as we believe local schools have vacancies in their nurseries and we are having to close our own pre school provision due to a lack of demand as parents who do want nursery age provision are looking for wrap around care which can not be provided by schools giving nursery places.

Signed by the governing body of


Stansfield Hall Church of England / Free Church Primary School

.....

(iv) St. Andrew's CE Governing Body Meeting
Thursday 16th May 2013

RESOLVED:

That i) the governing body considered the proposals and are unanimously supportive of the change in Age range and Significant Enlargement of the school; and
ii) governors thanked Mr. Swift for his presentation and attendance at the meeting.

(v)	<h2 style="margin: 0;">Student Council Minutes</h2> <div style="text-align: right; margin-top: 10px;"> Thursday 25th April 2013 12:30pm R2 </div>  <p><u>Present</u> We discussed whether we should have a nursery and whether we should enlarge the school.</p> <p><u>Nursery:</u> Might not be a good idea because not enough room to build Good if you have brother or sister at school We would have to make sure the building work doesn't distract us How long would the building work take? Gets them more educated for when they come in reception They would be used to come in to St.Andrews They would know all the rules in St.Andrews We had a vote and voted for a nursery</p> <p><u>Larger school:</u> Might mean we could have more equipment to have in school Might mean we could have sports hall which other people in the community could use Might mean less playing space Might be harder for people to get around We had a vote which was even!</p> <p><u>AOB:</u> Could each class have their own bag for playtimes</p>
(vi)	<p><u>letters-</u> From: R.A. Sent: 19 May 2013 16:26 Subject: St Andrew's School Dearnley - new proposals</p> <p>I am writing with my comments regarding the proposed establishment of a nursery class & significant enlargement at St Andrew's CE School, Dearnley</p> <p>Nursery class I am in agreement with this. I feel it is well overdue and will prevent children (like my 3) attending Nursery at one school & then starting Reception at St Andrew's - this has caused great upheaval & re-forming of friendships</p> <p>Enlargement of school I am very much in disagreement with this. The main reason I chose St Andrew's school is because it is small and personal - unlike most other schools in the area. I have several concerns if the school is enlarged including: - There are horrendous problems with car parking - in fact no car parking space at all - made worse since Birch Hill have closed off their car park. If a parent wants to be able to park anywhere near the school, they have to park HALF AN HOUR before school ends - otherwise it is necessary to park somewhere along Halifax Road. Each day some irresponsible parent parks on the yellow lines directly outside the school - the traffic warden is rarely there - one day a child will be knocked over. - The Hall of the school is too small - at the moment it is too cramped for all the children during</p>

assembly - this would have to be sorted out if more children were to attend.

- My children regularly complain that they are made to rush whilst eating their dinner. If the dinner-time system is not looked at again, this will be even worse when there are more children.
- The school has lovely green fields on which the children are rarely allowed to play on (because it is 'too wet') - I never understand the reasoning behind this. Instead they are forced to play on 2 small hard areas. If more children were to attend, playtime areas would have to improve & be made significantly larger & more appropriate.
- I am presuming that the provision of before & after school clubs will now be considered? Even more so if more children attend. Ironically, myself, & several others, have requested these facilities over the years, but the response has been lack of space - if the school is made larger, a lack of space can no longer be an excuse.

I hope my comments are listened to as I have 3 children in the school

Thank you.

(vii) **Wardle Childcare Partnership**



WARDLE CHILDCARE PARTNERSHIP
CROSSFIELD ROAD, WARDLE
ROCHDALE OL12 9JW
TELEPHONE 01706-838700

Dawn Jennings
 School Service
 Number One Riverside
 Rochdale
 OL16 1XU

11th June 2013

Re - Application for Nursery Provision at St Andrews C of E Primary School.


To Whom It May Concern:

I am writing on behalf of Wardle Childcare Partnership, with regard to the planned expansion and establishment of a Nursery Class at St. Andrews Primary School, Dearnley. After much deliberation and discussion Wardle Childcare Partnership Committee has no alternative but to strongly oppose these plans.

We currently offer a pre-school provision together with a holiday club and both breakfast and an after school club facility. These are all accommodated within the pre-school building, a portakabin, situated at St James's Primary School. Our children are able to enjoy outdoor learning and play, in a specially resourced area, designated to our pre school building.

Wardle Childcare Partnership was founded in May 2000. We feel privileged to have this facility within our Community and feel that our provision is extremely well established, which is borne out by the demand for places. Children from our pre-school provision move into a variety of school settings including St. Andrews and we pride ourselves on effective transition arrangements. We are concerned that if the plans are approved for a nursery at St Andrews, this will jeopardise not only the intake numbers for our pre-school provision, but also our holiday, breakfast and after school provision.

	<p>Wardle Childcare Partnership have previously looked into changing from a playgroup facility into an early years/nursery setting as we are already well established with existing children but this has been declined both as being deemed unnecessary and because there was no available funding for a capital project to extend the school building. If the demand for nursery places is already there then surely conversion of an existing setting would be a far more cost effective option.</p> <p>Given the costs set aside for a nursery provision at St.Andrews, Dearnley would it not be a far cheaper option to convert our well established setting? This would also save any potential loss of staff / redundancies. A new nursery may also have an effect on the child minders in Wardle Community as they may lose some of their children to this new provider.</p> <p>Furthermore we are unconvinced of the need for another Nursery Provider within the area of Dearnley, when there are plans for a new Private Nursery to be built within the old Birch Hill Hospital Site. Surely if a private nursery is to be built then the Local Authority would not be funding this. So once again the Local Authority would reduce their outgoings as conversion would be a more cost effective solution.</p> <p>Wardle Childcare Partnership has worked extremely hard to establish a well run and respected childcare facility serving Wardle and Wardle district families and we strongly oppose this application.</p> <p>Yours sincerely</p> <p><i>J. M. Gillespie</i></p> <p>Chair, Wardle Childcare Partnership</p>
(viii)	<p>Sure Start (e-mail 25th April 2013)</p> <p>We feel that we are able to support this proposal on the basis that there is little alternative early years provision in the immediate area.(the nearest nurseries are in Littleborough, Wardle or Smithybridge). We do see future requirement for new places for 3 and 4 year olds particularly if take up is increased from children residing in the Smallbridge area.</p> <p><i>Bob Adams</i> Childcare Development Manager</p>

(ix)	<p>Pennines Township Minute:</p> <p><u>15. St. Andrew's CE (Dearnley) Consultation on Proposed Change in Age Range to establish a Nursery Class and significant enlargement</u>  <u>PDF 4 MB</u></p> <p>Minutes:</p> <p>The Service Director - Support for Learning consulted the Township Committee on proposals regarding St. Andrew's Primary School, Littleborough. The Portfolio Holder for Children Schools and Families had approved going out to consultation on the proposals - ICM CSF 2-13 on 17th April 2013. The purpose of this report was to invite the views of the Pennines Township Committee on the proposals to change the age range of St. Andrew's Primary School to three to eleven years with the establishment of a Nursery Class, and for a significant enlargement to admit up to 45 children in each new school year group from 1st September 2014. This was part of a public consultation process, and the Township Committee's views were sought prior to submission to the Overview and Scrutiny Committee and the Cabinet. The Cabinet will then consider whether or not to publish statutory proposals.</p> <p>Accordingly the Township Committee was asked to consider the submitted report and to identify any views on the proposals to change the age range of the school with the addition of a nursery class with effect from 1st September 2014 and to significantly enlarge the school to admit a further 15 children in each new admission year from September 2014.</p> <p>In considering the report the Chair permitted Head Teachers from other primary schools in the Pennines Township, and representatives of Governing Bodies, to address the Committee. The Assistant Director undertook to collate comments made in this regard and to report them to the Overview and Scrutiny Committee, on 27th June 2013, and to the Cabinet meeting on 1st July 2013.</p> <p>DECIDED - that all comments received on this matter, including those received verbally at the meeting, and any subsequently received in writing, be noted and forwarded to the Overview and Scrutiny Committee, on 27th June 2013, and to the Cabinet for further consideration on 1st July 2013.</p> <p>Eligible for Call-in: No.</p> <p><u>Comments made at the open forum summarised by Committee Clerk:</u></p> <p>As discussed at the Pennines Township Committee the Headteacher of Littleborough Primary addressed the committee in the open forum in relation to item 14. St Andrews Consultation. I said I would forward you her comments. They are as follows: They feel strongly that it is not in the best interest for the proposed increase at St Andrews. Don't think it is reasonable or necessary. It was suggested that St Andrews is oversubscribed. Littleborough has approx. 1000 visitors a week includes sports centre, youth service, nursery service and health visitors. The school needs major repairs, why not use the funding available to improve what is already there.</p>
(x)	<p>Overview & Scrutiny Committee 27th June 2013</p> <p>The Committee was supportive of the proposals, and the report and minute can be found on the Council Website at:</p> <p>http://democracy.rochdale.gov.uk/ieListDocuments.aspx?CId=454&MId=2416&Ver=4</p>

DOCUMENT FOUR- Cabinet Report 1st July 2013

This is the text of the report. The Appendices are accessible on the Council Website at:

<http://democracy.rochdale.gov.uk/documents/s17734/StAndrewsCE%20ChangeInAgeRangeSignificantEnlargementCabinet%20Report%20July2013%2018-06-13.pdf>

Subject: St.Andrew's CE Primary School- Significant Enlargement and Change of Age Range.

Status: For Publication

Report to: Cabinet

Date: 1st July 2013

Report of: Assistant Director Early Help & Schools

Email: chris.swift@rochdale.gov.uk

Contact Officer Chris Swift, School Organisation and Development Manager

Tel: 01706 925016

Cabinet Member: Councillor Martin, Portfolio Holder for Children Schools and Families

Comments from Statutory Officers:

Section 151 Officer ✓ ☐
Monitoring Officer ✓ ☐

Key Decision: Yes / No

Forward Plan ✓ ☐ General Exception ☐ Special Urgency ☐

1. PURPOSE OF REPORT

- 1.1 On 17th April 2013 the Executive Member for Children Schools and Families, after consultation with the Chair of Pennines Township Committee, agreed that a public consultation following the statutory process should take place in respect of proposals for a Change in Age Range and Significant Enlargement at St.Andrew's CE. This report presents the outcome of that consultation process, and asks Cabinet to consider whether to publish statutory proposals in the light of that consultation.

2. RECOMMENDATIONS

- 2.1 Cabinet is asked to consider this report, together with the responses to the consultation, and to decide:
- i) Whether or not statutory proposals should be published to make a significant enlargement at St.Andrew's CE Primary School to admit up to 45 children in each new year group with effect from 1st September 2014; and also
 - ii) Whether to support the Governing Body of St.Andrew's CE in publishing proposals change in the age range to 3-11 by the establishment of a 26 full-time equivalent place Nursery Class with effect from 1st September 2014.

3. PROPOSAL TO ENLARGE THE SCHOOL AND ADD A NURSERY CLASS

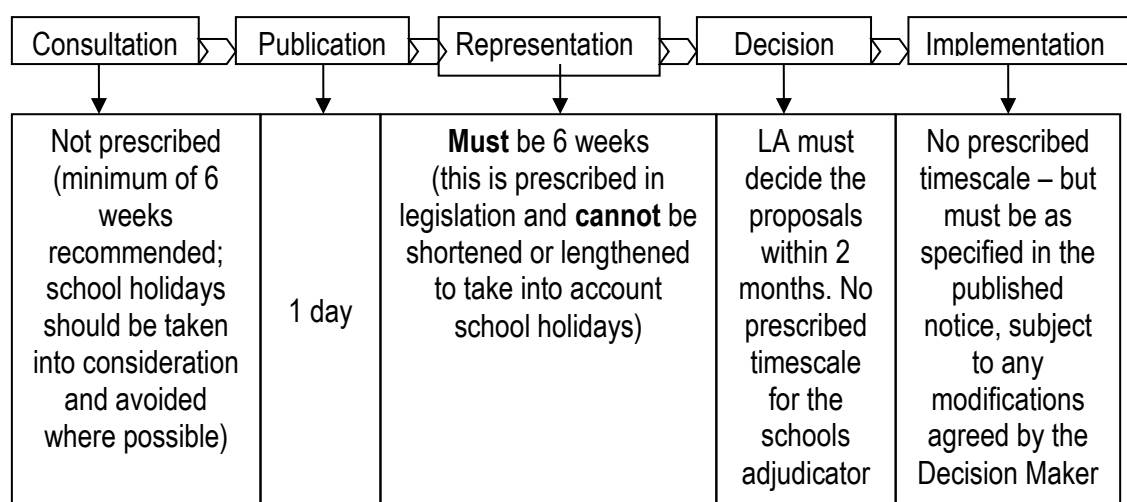
- 3.1 **Background:** Cabinet on 18th March 2013 considered the need for additional Reception Class places across the Borough, and this included additional Reception Class places at St.Andrew's CE. As part of the consultation on the need for additional places the Governing Body of the school asked that consideration be given to the establishment of a nursery class at the school. The need for extra Reception Class places is because of the increase in birth-led demographic demand in the area, which would also have implications for nursery provision. To accommodate the extra children additional accommodation will need to be

provided at the school. As these proposals are linked, the consultation has been undertaken by the Local Authority for both proposals.

3.2 **Increasing the Capacity of the School:** In order to admit an additional half form of entry (15 extra children in each new year group) from 2014, additional accommodation will be needed. To accommodate the total of 45 children in each year group in 2014 to 2016 and possibly beyond, the school will need 11 classrooms. Statutory proposals for a Significant Enlargement are required because additional permanent accommodation will be provided at the school and the additional numbers are planned for at least each of 3 years from 2014-2016. The Authority must also take into account that additional space has already been provided at the school, and additional pupils which were admitted in both September 2012 and the same maximum number planned for September 2013. Taken together with the new proposals this constitutes a significant enlargement of the school.

3.3 **Provision of a Nursery Class:** The Governing Body wrote to the Local Authority asking that consideration be given to establishing a Nursery Class at the school. The recent feasibility study undertaken for the enlargement of the school has included consideration of the provision of space for a Nursery Class. Provision of a 26 full-time-equivalent (fte) Nursery Class will add to the overall early years capacity within the area. The school puts forward a case for the establishment of a Nursery Class with particular emphasis on parental demand, supporting the economic well-being of families in an area of increasing deprivation, and improved outcomes for children.

3.4 **Consultation:** The statutory process for the consultation arrangement is set out below:



3.5 The arrangements for consultation are set out in Department for Education (DfE) statutory guidance- for a change in the age range to add a nursery class this is in “ Making Changes to a Maintained Mainstream School”, and to enlarge the school this is in “Expanding a Maintained Mainstream School by Enlargement or adding a Sixth Form”. Consultation on these proposals was undertaken between 17th April 2013 and 17th June 2013. A copy of the consultation letter is attached as **Appendix One**. As the proposals are linked a single consultation document was published to cover both the change in age range and the significant enlargement.

- 3.6 The consultation letter was sent to parents, pupils, staff and governors of the school, Headteachers and Governing Bodies of schools in Pennines Township, Secretaries of Recognised Trades Unions, neighbouring Local Authorities, Salford and Manchester Diocesan Authorities, MP for Rochdale, Pennines Township Councillors, Private and Voluntary Early Years Providers, The Early Years and Childcare Partnership and St. Andrew's Parochial Church Council.
- 3.7 ***The Responses to the Consultation*** received within the consultation period are attached as ***Appendix Two*** and are as follows:
- (i) 46 response forms were returned;
 - (ii) 2 Comments made at the Open Drop-In Session held on 2nd May;
 - (iii) The Governing Body of St Andrew's CE;
 - (iv) There are 5 letters from schools in the area;
 - (v) Wardle Childcare Partnership
 - (vi) 1 parent letter received to date
 - (vii) The Student Council of the School;
 - (viii) Sure Start (in places of the Early Years & Childcare Partnership);
 - (ix) Pennines Township Committee; and
 - (x) Overview and Scrutiny Committee (27th June).
- 3.8 In summary the views expressed are:
- (i) Of the 46 ***response forms***,
 - * 46 (including 1 parent who responded twice) were in favour of adding a nursery class to the school, no-one was against it;
 - * 35 were in favour of increasing the Intake to 45,
 - * 11 people (including 1 parent who responded twice) were against increasing the intake;
 - * 1 person did not indicate a response.

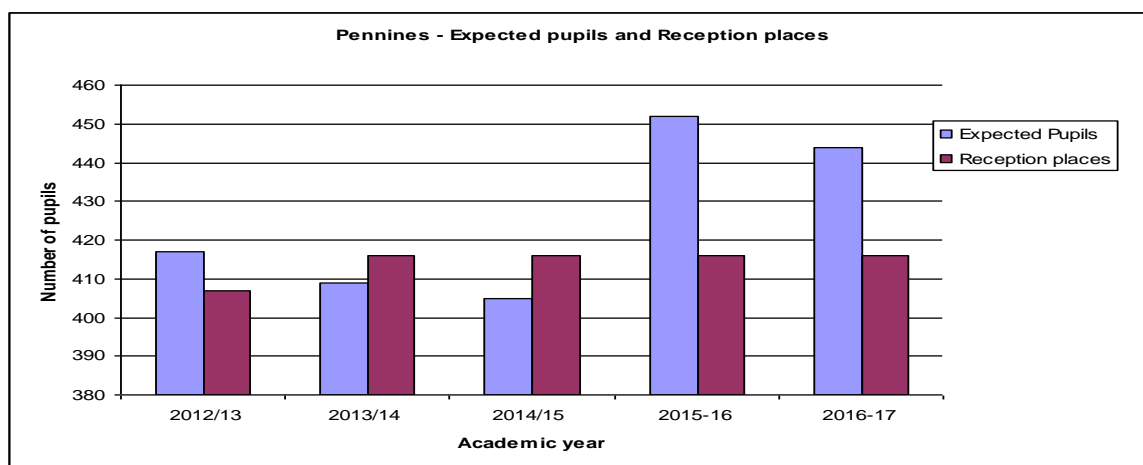
The comments made on the forms are set out at ***Appendix Two***. The majority of those comments were in favour of the proposals.
 - (ii) Both of the comments made at ***the Open Drop-In*** are favourable to both proposals, whilst expressing concerns about class size and sufficiency of play space.
 - (iii) Responses from ***5 schools*** in the area are not supportive of either proposal. In respect of Nursery places the schools point to current take up of nursery places and that their nursery classes where they have them are not full. In respect of the need for additional Reception Class places the schools challenge whether the places are needed at all given current vacancies in some schools in the Township. The key points put forward by these schools are:
 - * pupil numbers do not justify new nursery places and estimates for admissions to Pennines area schools have been inaccurate for the last two years;
 - * St. Andrew's is undersubscribed;
 - * There are vacancies in other schools in Littleborough and there is no case for more places;
 - * there are more faith based school places in Littleborough than non-faith based schools;
 - * there have been no consultation/meetings with the schools to date;
 - * there has been inadequate investigation into capacity and demand in other local primary schools; and
 - * the amount of money proposed is excessive and a proper development of existing schools would be better use of resources.
 - (iv) The ***Governing Body*** of the school is supportive of the proposals and their resolution is attached at ***Appendix Two***.

- (v) Comments from *the Student Council* are attached in full at **Appendix Two**, the Student Council is supportive of the proposed nursery, and the vote for or against the increase in intake was even. The students made a number of positive points about the advantages of each of the proposals, and identified concerns about the building work and space issues (indoor and outdoor).
 - (vi) There has been 1 parent response, who also returned 2 response forms, included in (i) above, and this is a fuller response to the proposals, which is supportive of the establishment of a nursery class, but not supportive of an enlargement of the school for a number of reasons- car parking issues, the school hall is too small and dinner times are already rushed, there is not enough play space, and asking whether there be “before and after” school clubs.
 - (vii) **Wardle Childcare Partnership** has responded and is not supportive of the establishment of a new nursery class for the following reasons:
 - * the nursery would jeopardise not only intake numbers for the pre-school provision, but also the holiday, breakfast and after school provision;
 - * Wardle Childcare Partnership has in the past tried to change from a playgroup facility to an early years/nursery setting, but this has been declined as being unnecessary and there was no funding for capital;
 - * if demand for nursery places is already there, then conversion of an existing setting would be a far more cost effective option;
 - * concern about potential job losses;
 - * concern about the effect on childminders in Wardle;
 - * unconvinced of the need for another nursery when there are plans for a new private nursery on the Birch Hospital site.
 - (viii) The response from **Sure Start** is to indicate, based on data from the current Childcare Sufficiency Assessment, that the proposal for the additional nursery places would not present issues of sustainability of existing places in the area.
 - (ix) **Pennines Township Committee** decided:

“that all comments received on this matter, including those received verbally at the meeting, and any subsequently received in writing, be noted and forwarded to the Overview and Scrutiny Committee, on 27th June 2013, and to the Cabinet for further consideration on 1st July 2013.”
 - (x) The views of **Overview and Scrutiny Committee** will be reported at Cabinet.
- 3.9 **Response to the comments made on Additional Nursery Places:** The Local Authority’s Childcare Sufficiency Assessment for 2013 indicates that, overall, in Wardle and West Littleborough Ward (the location of the school) there are currently just enough places to meet the free entitlement for 3-4 year olds, and the take up of entitlement places is high. It should be noted that the adjacent Smallbridge and Firgrove Ward has a shortage of places for 3-4 year olds, and a low take up rate. Littleborough Lakeside clearly has more places than currently eligible children, with not all of the eligible children taking up their entitlement. One of the schools plans to add 8 part-time places to their existing nursery class. Taken across the three wards there is an overall shortage of places, as well as about 90% take up of the entitlement.

WARD	No. of Eligible 3-4 Year Olds	Places	Coverage %	No. taking free entitlement	% taking free entitlement
Wardle & West Littleborough	168	172	102%	185	110%
Smallbridge & Firgrove	389	244	62.7%	304	78.1%
Littleborough Lakeside	201	280	140%	187	93%
Totals	758	696	91.8%	676	89%

- 3.10 Additional factors that support an increase in the number of places are that the child population is growing as evidenced by the need for additional Reception Class places in future years, and the extension of the free 15 hours entitlement to 2 year olds will mean that more nursery places will be needed in the future. The recommendation in the Childcare Sufficiency Assessment for Wardle & West Littleborough and Smallbridge & Firgrove Wards is to increase the number of providers offering free entitlement. The expansion of the school would arguably provide a cost-effective and timely opportunity to make more places available in the Township meeting parental preference.
- 3.11 In response to the view that current school providers are unable to fill all their nursery places, it should be kept in mind that additional Nursery Class capacity will extend choice to parents, and all the parental responses from the school support the establishment of a nursery class at the school. The view of neighbouring schools and one early years provider is that there is no need for additional nursery places and the money could be spent better elsewhere.
- 3.12 The view of Sure Start is that the proposal for the additional nursery places would not present issues of sustainability of existing places in the area.
- 3.13 ***Response to the comments made on Enlargement of the school:*** The demographic trend for Pennines Township suggests that there are enough places in the Township as a whole for both 2013 and 2014, but more places will be needed in 2015 and 2016. The geography of the Township is such that the pattern of demand varies across the different localities. A more detailed analysis of birth distribution and current pattern of preferences suggests a need for extra places to address both demographic and an element of preference demand. The graph below shows how many Reception Class places there are now and how many children are expected across the Township as a whole. The projections are based on birth data, with an addition of 3% for movement, but there is no specific additional allocation for the effect of new housing.



School Year	2012/13	2013/14	2014/15	2015/16	2016/17
Expected Reception Age pupils	417	409	405	452	444
Reception places available	407	416	416	416	416
Extra Places Needed	n/a	7 spare	11 spare	36	28

- 3.14 The information above was the basis for consultation with all schools in late Autumn Term 2012. The consultation paper indicated that whilst across the Township as a whole there were enough places for 2013 and 2014, applications needed to be monitored to respond to localised admission pressures. No responses were received in respect of the school place demand in Pennines Township, even though the consultation invited alternative proposals. A more detailed analysis of births and past patterns of first preferences in the Township suggest that in September 2013 there is likely to be a need for additional places in the Smithy Bridge/Wardle area, and also possibly in the Newhey area. That analysis was shared with the Pennines Cluster Headteachers at their meeting in December. In the January a report to Cabinet on Reception Class places for 2013 reported that analysis and Cabinet in March was asked to consider the provision of 15 additional places at each of St.Andrew's CE and Newhey Primary schools, following discussion with those schools, from September 2014.
- 3.15 Attached as **Appendix Three** are birth distribution maps and a summary of births by ward in the Township. These maps show the number of children born in each locality at lower level super output area for admission to the relevant year group. Taken together with the table in 3.16 below, it demonstrates the need for additional places at locality level in each of 2013 and 2014.
- 3.16 The table below sets out the birth, place availability and preference situation across the Township in September 2012, together with the position for 2013. For 2014 and 2015 it shows the birth and place availability. That level of detail will not be available until September 2013 but birth data at **Ward level** indicates an increase in demand for 2016 compared to 2015 in Littleborough Lakeside (up by 21 births) and Smallbridge and Firgrove (up by 12 births). However births in Wardle and West Littleborough are down by 8 births and Smallbridge and Milnrow and Newhey by 16 births). The overall position remains that across the township an extra form of entry will be needed to match demographic demand in 2016.

Area /Locality (not Ward)	September 2012 Admission				September 2013 Admission					September 2014 Admission			September 2015 Admission		
	Births	Places	First Preferences	Places Offered	Births	Places	Shortfall/ surplus	First Preferences	Places Offered at	Births	Places	Shortfall/ surplus	Births	Places	Shortfall/ surplus
Littleborough	123	140	124	130	125	140	+15	121	127	114	140	+26	123	140	+17
Wardle	40	30	40	30	36	30	-6	32	30	37	30	-7	41	30	-11
Smithy Bridge	103	90	84	102	88	90	+2	93	93	98	90	-8	98	90	-8
Milnrow	100	105	86	104	108	105	-3	92	103	94	105	+11	110	105	-5
Newhey	52	51	68	51	48	51	+3	57	58	59	51	-8	59	51	-7
TOTAL	418	416	402	417	405	416	+11	395	411	402	416	+12	431	416	-15
Smallbridge area schools:															
Smallbridge	155	114	41		126	114	-12		120	106	114	+8	111	114	+3

- 3.17 The current position for September 2013 Reception admissions (as at 6th June) is set out below. There have been a number of late applications to date which mean that there are not enough places in the two localities. To address the issue in the northern part of the township, additional places will be allocated at St.Andrew's CE for this September, where there are 3 further late applications to process, otherwise the Authority will not be able to

offer places within a reasonable distance. There are currently 6 late applications in the Milnrow/Newhey area that cannot be placed within current admission numbers. Further late applications are likely, up to the start of the Autumn Term. As can be seen from the table, there is only one school in the Littleborough area with vacant places. It's location at the edge of the borough means that for a number of children, this would be outside a reasonable walking distance.

School	PAN	Places offered	School	PAN	Places offered	School	PAN	Places offered
Littleborough	60	60	St.Andrew's CE VC	30	33	Crossgates F	45	45
Stansfield Hall CE VC	20	6	Smithy Bridge F	60	60	Milnrow Parish CE VA	30	28
Holy Trinity CE VA	30	31	St.James' CE F	30	30	Moorhouse	30	30
St.Mary's RC VA	30	30	St.Thomas' CE VA	21	23	Newhey	30	30
Smallbridge area schools:								
Kentmere	45	45	Hamer	45	45	Alice Ingham	24	30

3.18 **Response to the comments made on the accuracy of projected demand:** In March 2012 the Local Authority consulted on the need for additional Reception Class places for September 2012 admission. The consultation paper indicated that an additional 24 places were needed in the township for September. The proposal for consultation was that up to 30 places be provided at Littleborough CP school, because of the potential accommodation on site. At the same time it was agreed that Crossgates Primary school (Milnrow part of the Township) should increase admission by 8 places to 45 to meet localised demand. This suggested that upwards of 16 places would then be needed.

3.19 Stansfield Hall Primary School made representation to the Local Authority that the effect of putting additional places at Littleborough CP would adversely affect demand for places at their school, potentially challenging its' viability. The Authority therefore reconsidered the position, and approached St.Andrew's CE as the location of the additional places. The Governing Body of the school was supportive of the request. The Local Authority therefore exceeded the Published Admission Number at St.Andrew's CE by up to 30 places for September 2012. Places were offered to 42 children at St.Andrew's CE. The effect of this on Stansfield Hall was positive, and 13 place offers were made, much higher than the initial first preferences. The other Littleborough / Wardle/ Smithy Bridge area schools were full, with the exception of St.Mary's RC, which had 3 vacancies.

3.20 **Response to the comments made that St.Andrew's CE is undersubscribed:** The January 2013 School census shows that no school in this area of the Township is full when compared to the Admissions Number for the year group. Set out below is the Admission capacity and number on roll by year group for each of the schools in the locality. It shows the effect of increasing births and admissions in younger year groups.

	PAN 2012			PAN 2011			PAN 2010			PAN 2009			PAN 2008			PAN 2007			PAN 2006		
PENNINES	Rec	places left		Year1	places left		Year2	places left		Year3	places left		Year4	places left		Year5	places left		Year6	places left	
Littleborough	60	60	0	60	60	0	60	60	0	60	46	+14	60	57	+3	60	52	+8	60	45	+15
StansfieldHall CEVC	20	11	+9	20	7	+13	22	9	+13	22	10	+12	22	11	+11	22	15	+7	26	15	+11
Holy Trinity CE VA	30	30	0	22	32	-2	22	18	+4	22	31	-9	22	32	-10	22	20	+2	22	17	+5
St Andrew'sCE VC	30	42	+18	30	27	+3	30	30	+0	30	24	+6	30	30	0	35	24	+11	35	31	+4
Smithy Bridge	60	60	0	60	60	0	60	57	+3	60	60	0	60	60	0	60	55	+5	60	59	+1
St James' CE F	30	30	0	30	30	0	30	30	0	30	26	+4	30	29	+1	30	31	-1	35	34	+1
St Mary's RC	30	30	0	30	29	+1	30	30	0	30	29	+1	30	28	+2	30	28	+2	30	22	+8

- 3.21 ***Response to the comments made on the balance of denominational provision:*** Across the township as a whole there are currently 215 (40.6%) denominational Reception class places (CE and RC) and 315 (59.6%) non-denominational places. With the addition of 15 places at each of St.Andrew's CE and Newhey CP, this would change to 41.1% denominational places and 58.9% of non-denominational places, an increase of 0.7%.
- 3.22 The balance of denominational provision in the Littleborough, Wardle and Smithy Bridge area shows that there are currently 120 (46%) non-denominational Reception class places and 140 (54%) denominational places (CE & RC in both Voluntary Aided and Voluntary Controlled Schools). With the addition of 15 places at St.Andrew's CE this would change to 56% denominational places and 44% non-denominational places, an increase of 2%.
- 3.23 It is also possible to look at schools from the perspective of the admission criteria to identify the basis of admission. The Voluntary Aided schools all have church affiliation as the main criteria on which places are allocated. Admissions to Voluntary Controlled (VC) schools can take account of church affiliation, although for the two VC schools in the area no places have been offered this year on that basis. The Foundation schools do not have religious affiliation as an admission criterion.
- 3.24 ***Response to the comments made on Accommodation and outdoor space:*** A feasibility study has been undertaken which indicates that it is possible to add 3 classrooms and a nursery class to St.Andrew's CE school, as well as additional playground space. The nature of the site and available space present design constraints and the instruction to the architects take account of these matters. Detailed designs will be developed in consultation with the school.
- 3.25 ***Response to the comments made on capital costs and other building priorities:*** The Local Authority has a statutory duty to provide sufficient school places. The evidence provided in this report, and to Cabinet in January and March 2013, sets out the need for additional school places. Evidence on place demand already this year confirms that need. The Authority is aware of building condition issues at schools in the township and across the borough. Cabinet in March agreed a programme of approximately £2.1million to address the highest priority building condition issues. The estimated cost of additional teaching spaces at St.Andrew's is based on the range of costs that need to be taken into account.
- 3.26 ***Response to the comments made on consultation with schools:*** In November 2012 public consultation was undertaken with schools, parents, diocesan authorities and others, seeking views on the need for additional Reception Class places from September 2013, and inviting responses and alternative suggestions. The closing date for comments was 21st December 2012. No specific proposals for extra places were identified in the consultation paper, but the need for additional places was identified. There were no responses in respect of Pennines Township, even though the consultation invited alternative proposals. A more detailed analysis of births and past patterns of first preferences in the Township suggest that in September 2013 there is likely to be a need for additional places in the Smithy Bridge/Wardle area, and also possibly in the Newhey area. The Local Authority attended a meeting of Pennines Township Headteachers in December 2012 to set out the evidence to support this additional need and the areas with the additional demand. No alternative proposals were put forward.
- 3.27 ***Consideration of responses prior to deciding whether or not to publish statutory proposals:*** Before taking a decision on whether to publish statutory proposals, Members must take a view on the responses received through the consultation- the nature of

comments and concerns raised and the number of those comments. Members will also wish to take into account the commentary on those responses in the above paragraphs.

3.28 In the light of that consideration should Cabinet decide to publish statutory proposals there would be a further six week representation period, during which interested parties may make representations on the proposals. At the end of that period Cabinet would then determine the proposal in accordance with statutory guidance for decision makers.

3.29 At the end of the representation period in making the decision, Cabinet would have one of four possible outcomes: to approve the proposal; to approve the proposals with modification; to give a conditional approval to the proposals; or to reject the proposals. Specific guidance will be given at the time.

4. FINANCIAL IMPLICATIONS

4.1 The revenue funding for the Nursery Class, if approved, would be through the Early Years Single Funding Formula. Revenue funding for the increased mainstreamed capacity will be through the school funding formula which is Dedicated Schools Grant monies. In March 2013 Cabinet approved the Capital Programme for 2013-14, which included costs of up to £1.1 million for the enlargement of St.Andrew's CE Primary School and the establishment of a Nursery Class. This would be through Basic Need Capital Grant funding.

5. LEGAL IMPLICATIONS

5.1 The Local Authority is the Admission Authority for the school and is able to put forward proposals for the enlargement of the school. The Governing body of the school, as a Voluntary Controlled school is responsible for proposals to alter the age range of the school. The Local Authority is, responsible for determining published proposals in accordance with statutory and other guidance. To be valid, the Statutory Proposals must be published in accordance with the Statutory Guidance, and the Prescribed Information on the proposals must also be published at the same time.

5.2 The Statutory Proposal for the enlargement of the school would be published by the Local Authority. The Statutory Proposal for the establishment of a Nursery Class would be published by the Governing Body of the St.Andrew's CE. They would be published as linked proposals.

5.3 The Local Authority has a statutory duty to secure sufficient school places in their area. Local Authorities and other admission bodies have a duty to comply with infant class size limits. Admission Authorities have a duty to comply with any preference expressed by a parent for a school place except where to do so would prejudice the provision of efficient education and the efficient use of resources. The enlargement of St.Andrew's CE will enable the Local Authority to discharge those duties for this part of the Borough.

5.4 There are no other legal implications arising from this report.

6. PERSONNEL IMPLICATIONS

6.1 The governing body of the school would be responsible for the management of all staffing implications and appointments if the proposal is approved. There are no other personnel implications for the Local Authority.

7. CORPORATE PRIORITIES

- 7.1 The proposal is consistent with the Corporate priorities under “Aiming High” and the Children’s Plan, in particular under “Building Success & Independence”- (1.1)- improving children’s readiness for school.

8. RISK ASSESSMENT IMPLICATIONS

- 8.1 There is a statutory 6 week representation period following the publication of Statutory Proposals, which cannot be shortened or lengthened to take account of school holidays. It is expected that if approved, Statutory Proposals would be published on 6th July, and the closing date for representation would be midnight on Friday 16th August. The school summer term ends on Tuesday 23rd July.

9. EQUALITIES IMPACTS

9.1 Workforce Equality Impacts Assessment

There are no workforce equality issues arising from this report.

9.2 Equality/Community Impact Assessments

The Equality Impact Assessment is attached as **Appendix Four**.

Background Papers	
Document	Place of Inspection
Making Changes to Mainstream Schools Decision Makers Guidance	http://www.dcsf.gov.uk/schoolorg/data/guidance_Documents/Other%20Changes%20Guide%202010-02-01-DM%20only.doc
Expanding a Maintained Mainstream School by Enlargement or adding a Sixth Form	http://education.gov.uk/leadership/schoolorganisation/b0075166/other-changes-to-a-school-and-expansion
The Need for Extra Reception Class Places- Pennines Township	http://consultations.rochdale.gov.uk/council-wide/schools/supporting_documents/Reception%20Class%20Places%20Consultation%20Letter%20Pennines%2017Jan2012.doc
Rochdale Childcare Sufficiency Assessment	http://www.rochdale.gov.uk/the_council/policies_and_plans/children_and_young_people/childcare_sufficiency_assessme.aspx

DOCUMENT FIVE - Governing Body Report 2nd July 2013

St.Andrew's CE Primary School Governing Body	
Date of Meeting	2nd July 2013
Title	St.Andrew's CE Primary School Proposed Change in Age Range and Significant Enlargement: Report on Outcomes of Public Consultation
Report of	Headteacher

1. BACKGROUND & PURPOSE OF REPORT

- 1.2 On 6th March 2013 the Chair of Governors and Headteacher wrote to the Local Authority asking that consideration be given to the establishment of a nursery class at the school. On 17th April 2013 the Executive Member for Children Schools and Families, after consultation with the Chair of Pennines Township Committee, agreed that a public consultation following the statutory process should take place in respect of proposals for both a Change in Age Range and Significant Enlargement at St.Andrew's CE. This report presents the outcome of that consultation process, and asks the Governing Body to consider whether to publish statutory proposals for change in age range in the light of that consultation.

2. RECOMMENDATIONS

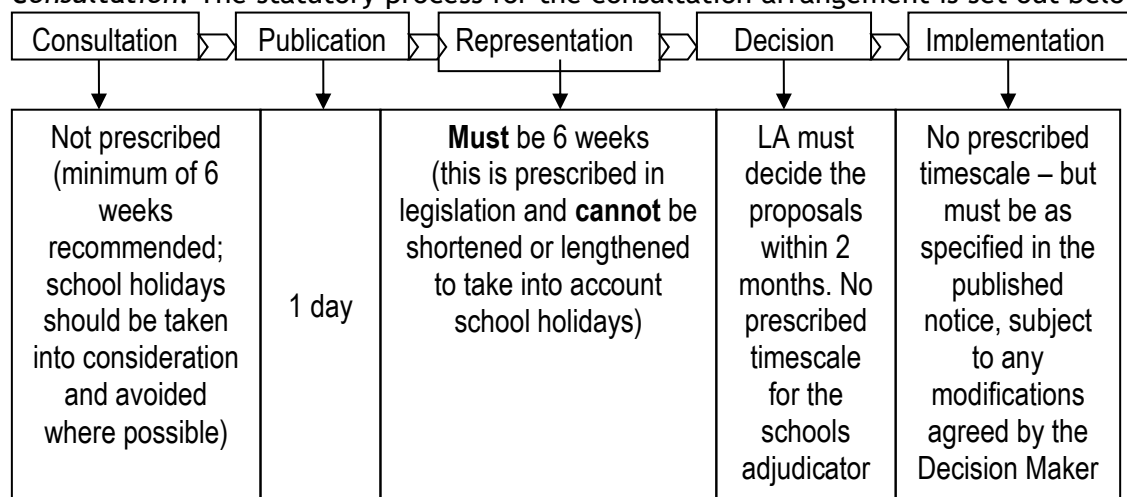
- 2.2 The Governing Body is asked to consider this report, together with the responses to the consultation, and to decide:
- (i) Whether or not statutory proposals should be published by the Governing Body to change the age range of the school to 3-11 by the establishment of a 26 full-time equivalent place nursery class with effect from 1st September 2014; and
 - (ii) Whether to support the Local Authority in publishing statutory proposals to make a significant enlargement at St.Andrew's CE Primary School to admit up to 45 children in each new year group with effect from 1st September 2014.

3. PROPOSAL TO ENLARGE THE SCHOOL AND ADD A NURSERY CLASS

- 3.30 *Background:* Cabinet on 18th March 2013 considered the need for additional Reception Class places across the Borough, and this included additional Reception Class places at St.Andrew's CE. As part of the consultation on the need for additional places the Governing Body of the school asked that consideration be given to the establishment of a nursery class at the school. The need for extra Reception Class places is because of the increase in birth-led demographic demand in the area, which would also have implications for nursery provision. To accommodate the extra children additional accommodation will need to be provided at the school. As these proposals are linked, the consultation has been undertaken by the Local Authority for both proposals.
- 3.31 *Increasing the Capacity of the School:* In order to admit an additional half form of entry (15 extra children in each new year group) from 2014, additional accommodation will be needed. To accommodate the total of 45 children in each year group in 2014 to 2016 and possibly beyond, the school will need 11 classrooms. Statutory proposals for a Significant Enlargement are required because additional permanent accommodation will be provided at the school and the additional numbers are planned for at least each of 3 years from 2014-2016. The Authority must also take into account that additional space has already been provided at the school, and additional pupils which were admitted in both September 2012 and the same maximum number planned for September 2013. Taken together with the new proposals this constitutes a significant enlargement of the school.

3.32 *Provision of a Nursery Class:* The Governing Body wrote to the Local Authority asking that consideration be given to establishing a Nursery Class at the school. The recent feasibility study undertaken for the enlargement of the school has included consideration of the provision of space for a Nursery Class. Provision of a 26 full-time-equivalent (fte) Nursery Class will add to the overall early years capacity within the area. The school put forward a case for the establishment of a Nursery Class with particular emphasis on parental demand, supporting the economic well-being of families in an area of increasing deprivation, and improved outcomes for children.

3.33 *Consultation:* The statutory process for the consultation arrangement is set out below:



3.34 The arrangements for consultation are set out in the Department for Education’s (DfE) statutory guidance- for a change in the age range to add a nursery class this is in “ Making Changes to a Maintained Mainstream School”, and to enlarge the school this is in “Expanding a Maintained Mainstream School by Enlargement or adding a Sixth Form”. Consultation on these proposals was undertaken between 17th April 2013 and 17th June 2013. A copy of the consultation letter is attached as **Appendix One**. As the proposals are linked a single consultation document was published to cover both the change in age range and the significant enlargement.

3.35 The consultation letter was sent to parents, pupils, staff and governors of the school, Headteachers and Governing Bodies of schools in Pennines Township, Secretaries of Recognised Trades Unions, neighbouring Local Authorities, Salford and Manchester Diocesan Authorities, MP for Rochdale, Pennines Township Councillors, Private and Voluntary Early Years Providers, The Early Years and Childcare Partnership and St.Andrew’s Parochial Church Council.

3.36 **The Responses to the Consultation** received within the consultation period are attached as **Appendix Two** and are as follows:

- (i) 46 response forms were returned;
- (ii) 2 Comments made at the Open Drop-In Session held on 2nd May;
- (iii) The Governing Body of St Andrew’s CE;
- (iv) There are 5 letters from schools in the area;
- (v) Wardle Childcare Partnership
- (vi) (1 parent letter received to date)
- (vii) The Student Council of the School;
- (viii) Sure Start (in places of the Early Years & Childcare Partnership);

- (ix) Pennines Township Committee; and
- (x) Overview and Scrutiny Committee (27th June).

3.37 In summary the views expressed are:

(i) Of the 46 **response forms**,

- * 46 (including 1 parent who responded twice) were in favour of adding a nursery class to the school, no-one was against it;
- * 35 were in favour of increasing the Intake to 45,
- * 11 people (including 1 parent who responded twice) were against increasing the intake;
- * 1 person did not indicate a response.

The comments made on the forms are set out at **Appendix Two**. The majority of those comments were in favour of the proposals.

- (ii) Both of the comments made at **the Open Drop-In** are favourable to both proposals, whilst expressing concerns about class size and sufficiency of play space.
- (iii) Responses from **5 schools** in the area are not supportive of either proposal. In respect of Nursery places the schools point to current take up of nursery places and that their nursery classes where they have them are not full. In respect of the need for additional Reception Class places the schools challenge whether the places are needed at all given current vacancies in some schools in the Township. The key points put forward by these schools are:
 - * pupil numbers do not justify new nursery places and estimates for admissions to Pennines area schools have been inaccurate for the last two years;
 - * St.Andrew's is undersubscribed;
 - * There are vacancies in other schools in Littleborough and there is no case for more places;
 - * there are more faith based school places in Littleborough than non-faith based schools;
 - * there have been no consultation/meetings with the schools to date;
 - * there has been inadequate investigation into capacity and demand in other local primary schools; and
 - * the amount of money proposed is excessive and a proper development of existing schools would be better use of resources.
- (iv) **St.Andrews CE Governing Body** of the school is supportive of both proposals and the resolution is attached at **Appendix Two**.
- (v) Comments from **the Student Council** of the school are attached in full at **Appendix Two**, the Student Council is supportive of the proposed nursery, and the vote for or against the increase in intake was even. The students made a number of positive points about the advantages of each of the proposals, and identified concerns about the building work and space issues (indoor and outdoor).
- (vi) There has been 1 parent response, who also returned 2 response forms, included in (i) above, and this is a fuller response to the proposals, which is supportive of the establishment of a nursery class, but not supportive of an enlargement of the school for a number of reasons- car parking issues, the school hall is too small and dinner times are already rushed, there is not enough play space, and asking whether there be "before and after" school clubs.
- (vii) **Wardle Childcare Partnership** has responded and is not supportive of the establishment of a new nursery class for the following reasons:
 - * the nursery would jeopardise not only intake numbers for the pre-school provision, but also the holiday, breakfast and after school provision;

- * Wardle Childcare Partnership has in the past tried to change from a playgroup facility to an early years/nursery setting, but this has been declined as being unnecessary and there was no funding for capital;
- * if demand for nursery places is already there, then conversion of an existing setting would be a far more cost effective option;
- * concern about potential job losses;
- * concern about the effect on childminders in Wardle;
- * unconvinced of the need for another nursery when there are plans for a new private nursery on the Birch Hospital site.

(viii) The response from ***Sure Start*** is to indicate, based on data from the current Childcare Sufficiency Assessment, that the proposal for the additional nursery places would not present issues of sustainability of existing places in the area.

(ix) ***Pennines Township Committee*** decided:
 “that all comments received on this matter, including those received verbally at the meeting, and any subsequently received in writing, be noted and forwarded to the Overview and Scrutiny Committee, on 27th June 2013, and to the Cabinet for further consideration on 1st July 2013.”

(x) The views of ***Overview and Scrutiny Committee*** will be reported at Cabinet.

3.38 ***Response to the comments made on Additional Nursery Places:*** The Local Authority’s Childcare Sufficiency Assessment for 2013 indicates that, overall, in Wardle and West Littleborough Ward (the location of the school) there are currently just enough places to meet the free entitlement for 3-4 year olds, and the take up of entitlement places is high. It should be noted that the adjacent Smallbridge and Firgrove Ward has a shortage of places for 3-4 year olds, and a low take up rate. Littleborough Lakeside clearly has more places than currently eligible children, with not all of the eligible children taking up their entitlement. One of the schools plans to add 8 part-time places to their existing nursery class. Taken across the three wards there is an overall shortage of places, as well as about 90% take up of the entitlement.

WARD	No. of Eligible 3-4 Year Olds	Places	Coverage %	No. taking free entitlement	% taking free entitlement
Wardle & West Littleborough	168	172	102%	185	110%
Smallbridge & Firgrove	389	244	62.7%	304	78.1%
Littleborough Lakeside	201	280	140%	187	93%
Totals	758	696	91.8%	676	89%

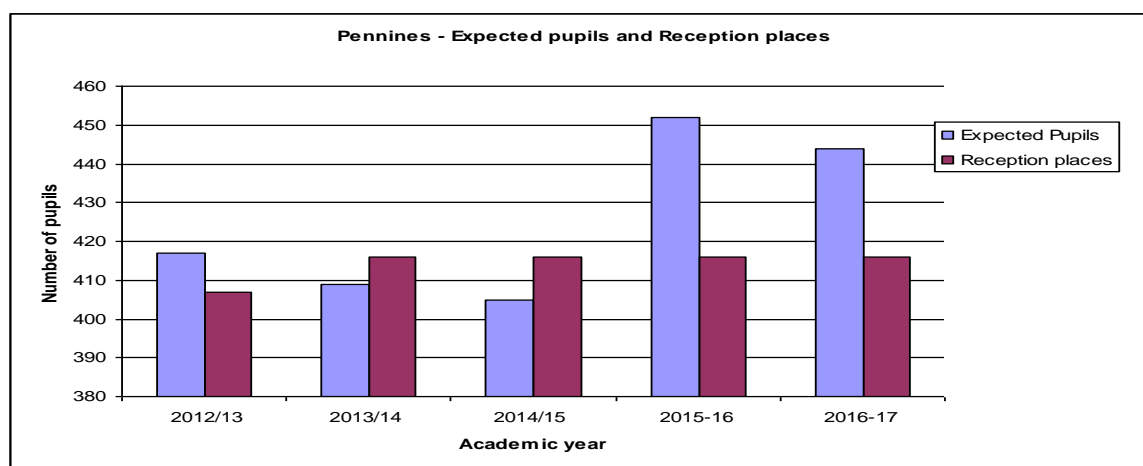
3.39 Additional factors that support an increase in the number of places are that the child population is growing as evidenced by the need for additional Reception Class places in future years, and the extension of the free 15 hours entitlement to 2 year olds will mean that more nursery places will be needed in the future. The recommendation in the Childcare Sufficiency Assessment for Wardle & West Littleborough and Smallbridge & Firgrove Wards is to increase the number of providers offering free entitlement. The expansion of the school would arguably provide a cost-effective and timely opportunity to make more places available in the Township meeting parental preference.

3.40 In response to the view that current school providers are unable to fill all their nursery places, it should be kept in mind that additional Nursery Class capacity will extend choice to parents, and all the parental responses from the school support the establishment of a

nursery class at the school. The view of neighbouring schools and one early years provider is that there is no need for additional nursery places and the money could be spent better elsewhere.

3.41 The view of Sure Start is that the proposal for the additional nursery places would not present issues of sustainability of existing places in the area.

3.42 **Response to the comments made on Enlargement of the school:** The demographic trend for Pennines Township suggests that there are enough places in the Township as a whole for both 2013 and 2014, but more places will be needed in 2015 and 2016. The geography of the Township is such that the pattern of demand varies across the different localities. A more detailed analysis of birth distribution and current pattern of preferences suggests a need for extra places to address both demographic and an element of preference demand. The graph below shows how many Reception Class places there are now and how many children are expected across the Township as a whole. The projections are based on birth data, with an addition of 3% for movement, but there is no specific additional allocation for the effect of new housing.



School Year	2012/13	2013/14	2014/15	2015/16	2016/17
Expected Reception Age pupils	417	409	405	452	444
Reception places available	407	416	416	416	416
Extra Places Needed	n/a	7 spare	11 spare	36	28

3.43 The information above was the basis for consultation with all schools in late Autumn Term 2012. The consultation paper indicated that whilst across the Township as a whole there were enough places for 2013 and 2014, applications needed to be monitored to respond to localised admission pressures. No responses were received in respect of the school place demand in Pennines Township, even though the consultation invited alternative proposals. A more detailed analysis of births and past patterns of first preferences in the Township suggest that in September 2013 there is likely to be a need for additional places in the Smithy Bridge/Wardle area, and also possibly in the Newhey area. That analysis was shared with the Pennines Cluster Headteachers at their meeting in December. In the January a report to Cabinet on Reception Class places for 2013 reported that analysis and Cabinet in March was asked to consider the provision of 15 additional places at each of St.Andrew's CE and Newhey Primary schools, following discussion with those schools, from September 2014.

3.44 Attached as **Appendix Three** are birth distribution maps and a summary of births by ward in the Township. These maps show the number of children born in each locality at lower level

super output area for admission to the relevant year group. Taken together with the table in 3.16 below, it demonstrates the need for additional places at locality level in each of 2013 and 2014.

- 3.45 The table below sets out the birth, place availability and preference situation across the Township in September 2012, together with the position for 2013. For 2014 and 2015 it shows the birth and place availability. That level of detail will not be available until September 2013 but birth data at **Ward level** indicates an increase in demand for 2016 compared to 2015 in Littleborough Lakeside (up by 21 births) and Smallbridge and Firgrove (up by 12 births). However births in Wardle and West Littleborough are down by 8 births and Smallbridge and Milnrow and Newhey by 16 births). The overall position remains that across the township an extra form of entry will be needed to match demographic demand in 2016.

Area /Locality (not Ward)	September 2012 Admission				September 2013 Admission					September 2014 Admission			September 2015 Admission		
	Births	Places	First Preferences	Places Offered	Births	Places	Shortfall/ surplus	First Preferences	Places Offered at	Births	Places	Shortfall/ surplus	Births	Places	Shortfall/ surplus
Littleborough	123	140	124	130	125	140	+15	121	127	114	140	+26	123	140	+17
Wardle	40	30	40	30	36	30	-6	32	30	37	30	-7	41	30	-11
Smithy Bridge	103	90	84	102	88	90	+2	93	93	98	90	-8	98	90	-8
Milnrow	100	105	86	104	108	105	-3	92	103	94	105	+11	110	105	-5
Newhey	52	51	68	51	48	51	+3	57	58	59	51	-8	59	51	-7
TOTAL	418	416	402	417	405	416	+11	395	411	402	416	+12	431	416	-15
Smallbridge area schools:															
Smallbridge	155	114	41		126	114	-12		120	106	114	+8	111	114	+3

- 3.46 The current position for September 2013 Reception admissions (as at 6th June) is set out below. There have been a number of late applications to date which mean that there are not enough places in the two localities. To address the issue in the northern part of the township, additional places will be allocated at St.Andrew's CE for this September, where there are 3 further late applications to process, otherwise the Authority will not be able to offer places within a reasonable distance. There are currently 6 late applications in the Milnrow/Newhey area that cannot be placed within current admission numbers. Further late applications are likely, up to the start of the Autumn Term. As can be seen from the table, there is only one school in the Littleborough area with vacant places. It's location at the edge of the borough means that for a number of children, this would be outside a reasonable walking distance.

School	PAN	Places offered	School	PAN	Places offered	School	PAN	Places offered
Littleborough	60	60	St.Andrew's CE VC	30	33	Crossgates F	45	45
Stansfield Hall CE VC	20	6	Smithy Bridge F	60	60	Milnrow Parish CE VA	30	28
Holy Trinity CE VA	30	31	St.James' CE F	30	30	Moorhouse	30	30
St.Mary's RC VA	30	30	St.Thomas' CE VA	21	23	Newhey	30	30
Smallbridge area schools:								
Kentmere	45	45	Hamer	45	45	Alice Ingham	24	30

- 3.47 **Response to the comments made on the accuracy of projected demand:** In March 2012 the Local Authority consulted on the need for additional Reception Class places for September 2012 admission. The consultation paper indicated that an additional 24 places were needed in the township for September. The proposal for consultation was that up to 30

places be provided at Littleborough CP school, because of the potential accommodation on site. At the same time it was agreed that Crossgates Primary school (Milnrow part of the Township) should increase admission by 8 places to 45 to meet localised demand. This suggested that upwards of 16 places would then be needed.

- 3.48 Stansfield Hall Primary School made representation to the Local Authority that the effect of putting additional places at Littleborough CP would adversely affect demand for places at their school, potentially challenging its' viability. The Authority therefore reconsidered the position, and approached St.Andrew's CE as the location of the additional places. The Governing Body of the school was supportive of the request. The Local Authority therefore exceeded the Published Admission Number at St.Andrew's CE by up to 30 places for September 2012. Places were offered to 42 children at St.Andrew's CE. The effect of this on Stansfield Hall was positive, and 13 place offers were made, much higher than the initial first preferences. The other Littleborough / Wardle/ Smithy Bridge area schools were full, with the exception of St.Mary's RC, which had 3 vacancies.

- 3.49 **Response to the comments made that St.Andrew's CE is undersubscribed:** The January 2013 School census shows that no school in this area of the Township is full when compared to the Admissions Number for the year group. Set out below is the Admission capacity and number on roll by year group for each of the schools in the locality. It shows the effect of increasing births and admissions in younger year groups.

	PAN 2012			PAN 2011			PAN 2010			PAN 2009			PAN 2008			PAN 2007			PAN 2006		
PENNINES	Rec	places left		Year1	places left		Year2	places left		Year3	places left		Year4	places left		Year5	places left		Year6	places left	
Littleborough	60	60	0	60	60	0	60	60	0	60	46	+14	60	57	+3	60	52	+8	60	45	+15
StansfieldHall CEVC	20	11	+9	20	7	+13	22	9	+13	22	10	+12	22	11	+11	22	15	+7	26	15	+11
Holy Trinity CE VA	30	30	0	22	32	-2	22	18	+4	22	31	-9	22	32	-10	22	20	+2	22	17	+5
St Andrew'sCE VC	30	42	+18	30	27	+3	30	30	+0	30	24	+6	30	30	0	35	24	+11	35	31	+4
Smithy Bridge	60	60	0	60	60	0	60	57	+3	60	60	0	60	60	0	60	55	+5	60	59	+1
St James' CE F	30	30	0	30	30	0	30	30	0	30	26	+4	30	29	+1	30	31	-1	35	34	+1
St Mary's RC	30	30	0	30	29	+1	30	30	0	30	29	+1	30	28	+2	30	28	+2	30	22	+8

- 3.50 **Response to the comments made on the balance of denominational provision:** Across the township as a whole there are currently 215 (40.6%) denominational Reception class places (CE and RC) and 315 (59.6%) non-denominational places. With the addition of 15 places at each of St.Andrew's CE and Newhey CP, this would change to 41.1% denominational places and 58.9% of non-denominational places, an increase of 0.7%.
- 3.51 The balance of denominational provision in the Littleborough, Wardle and Smithy Bridge area shows that there are currently 120 (46%) non-denominational Reception class places and 140 (54%) denominational places (CE & RC in both Voluntary Aided and Voluntary Controlled Schools). With the addition of 15 places at St.Andrew's CE this would change to 56% denominational places and 44% non-denominational places, an increase of 2%.
- 3.52 It is also possible to look at schools from the perspective of the admission criteria to identify the basis of admission. The Voluntary Aided schools all have church affiliation as the main criteria on which places are allocated. Admissions to Voluntary Controlled (VC) schools can take account of church affiliation, although for the two VC schools in the area no places

have been offered this year on that basis. The Foundation schools do not have religious affiliation as an admission criterion.

- 3.53 ***Response to the comments made on Accommodation and outdoor space:*** A feasibility study has been undertaken which indicates that it is possible to add 3 classrooms and a nursery class to St.Andrew's CE school, as well as additional playground space. The nature of the site and available space present design constraints and the instruction to the architects take account of these matters. Detailed designs will be developed in consultation with the school.
- 3.54 ***Response to the comments made on capital costs and other building priorities:*** The Local Authority has a statutory duty to provide sufficient school places. The evidence provided in this report, and to Cabinet in January and March 2013, sets out the need for additional school places. Evidence on place demand already this year confirms that need. The Authority is aware of building condition issues at schools in the township and across the borough. Cabinet in March agreed a programme of approximately £2.1million to address the highest priority building condition issues. The estimated cost of additional teaching spaces at St.Andrew's is based on the range of costs that need to be taken into account.
- 3.55 ***Response to the comments made on consultation with schools:*** In November 2012 public consultation was undertaken with schools, parents, diocesan authorities and others, seeking views on the need for additional Reception Class places from September 2013, and inviting responses and alternative suggestions. The closing date for comments was 21st December 2012. No specific proposals for extra places were identified in the consultation paper, but the need for additional places was identified. There were no responses in respect of Pennines Township, even though the consultation invited alternative proposals. A more detailed analysis of births and past patterns of first preferences in the Township suggest that in September 2013 there is likely to be a need for additional places in the Smithy Bridge/Wardle area, and also possibly in the Newhey area. The Local Authority attended a meeting of Pennines Township Headteachers in December 2012 to set out the evidence to support this additional need and the areas with the additional demand. No alternative proposals were put forward.
- 3.56 ***Consideration of responses prior to deciding whether or not to publish statutory proposals:*** Before taking a decision on whether to publish statutory proposals, the Governing Body must take a view on the responses received through the consultation- the nature of comments and concerns raised and the number of those comments. Governors will also wish to take into account the commentary on those responses in the above paragraphs.
- 3.57 In the light of that consideration should the Governing Body decide to publish statutory proposals there would be a further six week representation period, during which interested parties may make representations on the proposals. At the end of that period Cabinet would then determine the proposal in accordance with statutory guidance for decision makers.
- 3.58 At the end of the representation period in making the decision, Cabinet would have one of four possible outcomes: to approve the proposal; to approve the proposals with modification; to give a conditional approval to the proposals; or to reject the proposals. Specific guidance will be given at the time.

4. FINANCIAL IMPLICATIONS

- 4.2 The revenue funding for the Nursery Class, if approved, would be through the Early Years Single Funding Formula. Revenue funding for the increased mainstreamed capacity will be through the school funding formula which is Dedicated Schools Grant monies. In March 2013

Cabinet approved the Capital Programme for 2013-14, which included costs of up to £1.1 million for the enlargement of St.Andrew's CE Primary School and the establishment of a Nursery Class. This would be through Basic Need Capital Grant funding.

5. LEGAL IMPLICATIONS

- 5.5 The Local Authority is the Admission Authority for the school and is able to put forward proposals for the enlargement of the school. The Governing body of the school, as a Voluntary Controlled school is responsible for proposals to alter the age range of the school. The Local Authority is responsible for determining published proposals in accordance with statutory and other guidance. To be valid, the Statutory Proposals must be published in accordance with the Statutory Guidance, and the Prescribed Information on the proposals must also be published at the same time.
- 5.6 The Governing Body can only publish statutory proposals if it is able to implement them. Written confirmation is required to show how the capital costs will be met. The Local Authority confirms that it will meet the capital costs of the project subject to the approval of any Published Proposals, and the estimated project costs set out in paragraph 4 above.
- 5.7 The Statutory Proposal for the enlargement of the school would be published by the Local Authority. The Statutory Proposal for the establishment of a Nursery Class would be published by the Governing Body of the St.Andrew's CE. They would be published as linked proposals.

6. PERSONNEL IMPLICATIONS

- 6.1 The governing body of the school would be responsible for the management of all staffing implications and appointments if the proposal is approved. There are no other personnel implications for the Local Authority.

7. RISK ASSESSMENT IMPLICATIONS

- 7.1 There is a statutory 6 week representation period following the publication of Statutory Proposals, which cannot be shortened or lengthened to take account of school holidays. It is expected that if approved, Statutory Proposals would be published on 6th July, and the closing date for representation would be midnight on Friday 16th August. The school summer term ends on Tuesday 23rd July.

8. EQUALITIES IMPACT ASSESSMENT

- 8.1 As a public Body the Governing Body is required to have an Equality Impact Assessment for a change in policy such as the change in age range of the school. As this proposal is linked to the Local Authority proposal to enlarge the school, there is a single Equality Impact Assessment covering both proposals A copy is attached as **Appendix Four**.

Background Papers	
Document	Place of Inspection
Making Changes to Mainstream Schools Decision Makers Guidance	http://www.dcsf.gov.uk/schoolorg/data/guidance_Documents/Other%20Changes%20Guide%202010-02-01-DM%20only.doc
Expanding a Maintained Mainstream School by Enlargement or adding a Sixth Form	http://education.gov.uk/leadership/schoolorganisation/b0075166/other-changes-to-a-school-and-expansion
The Need for Extra Reception Class Places- Pennines Township	http://consultations.rochdale.gov.uk/council-wide/schools/supporting_documents/Reception%20Class%20Places%20Consultation%20Letter%20Pennines%2017Jan2012.doc
Rochdale Childcare Sufficiency Assessment	http://www.rochdale.gov.uk/the_council/policies_and_plans/children_and_young_people/childcare_sufficiency_assessme.aspx

APPENDIX ONE - Consultation Letter –

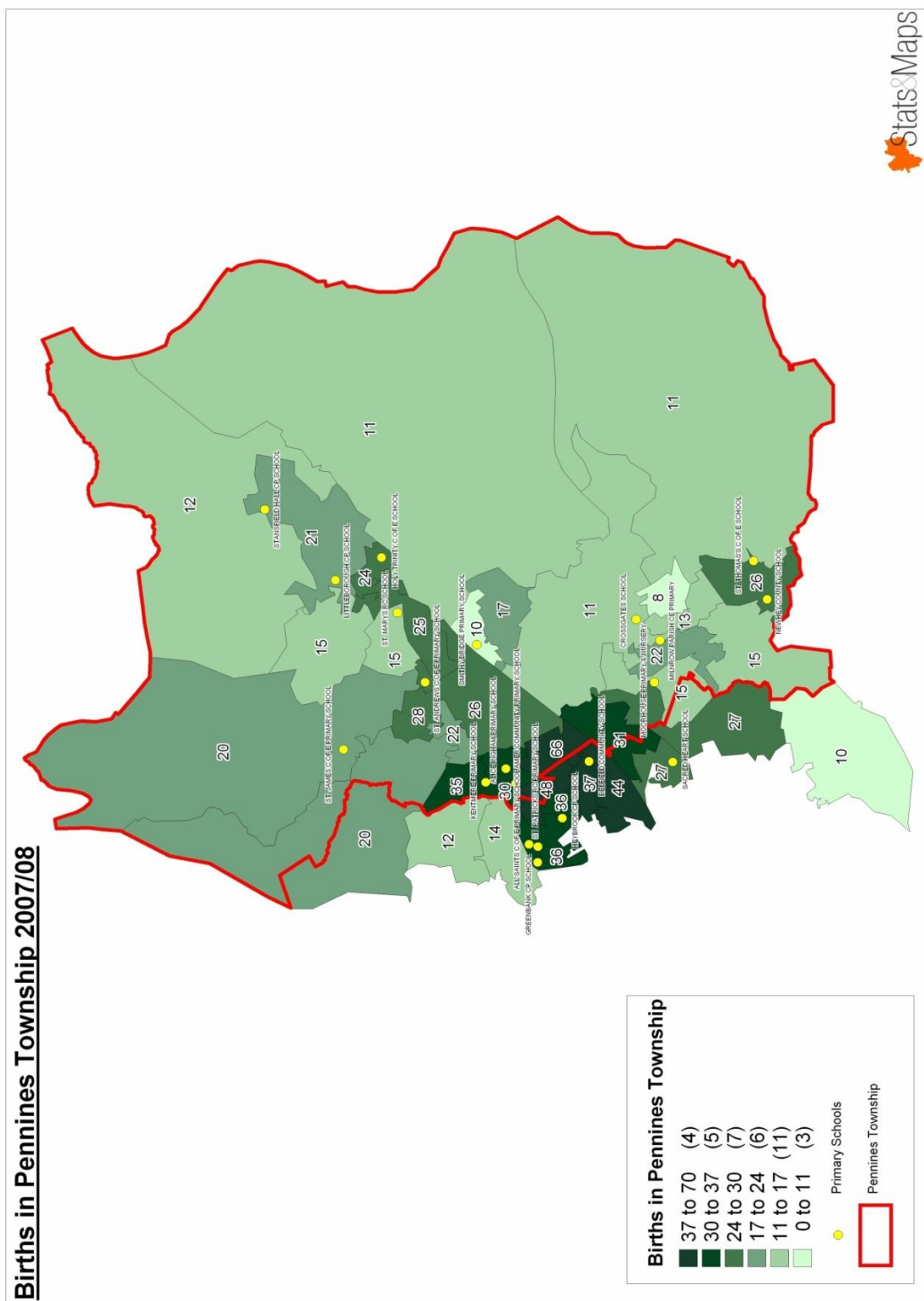
This can be found at DOCUMENT ONE ABOVE- Pages 12 & 13

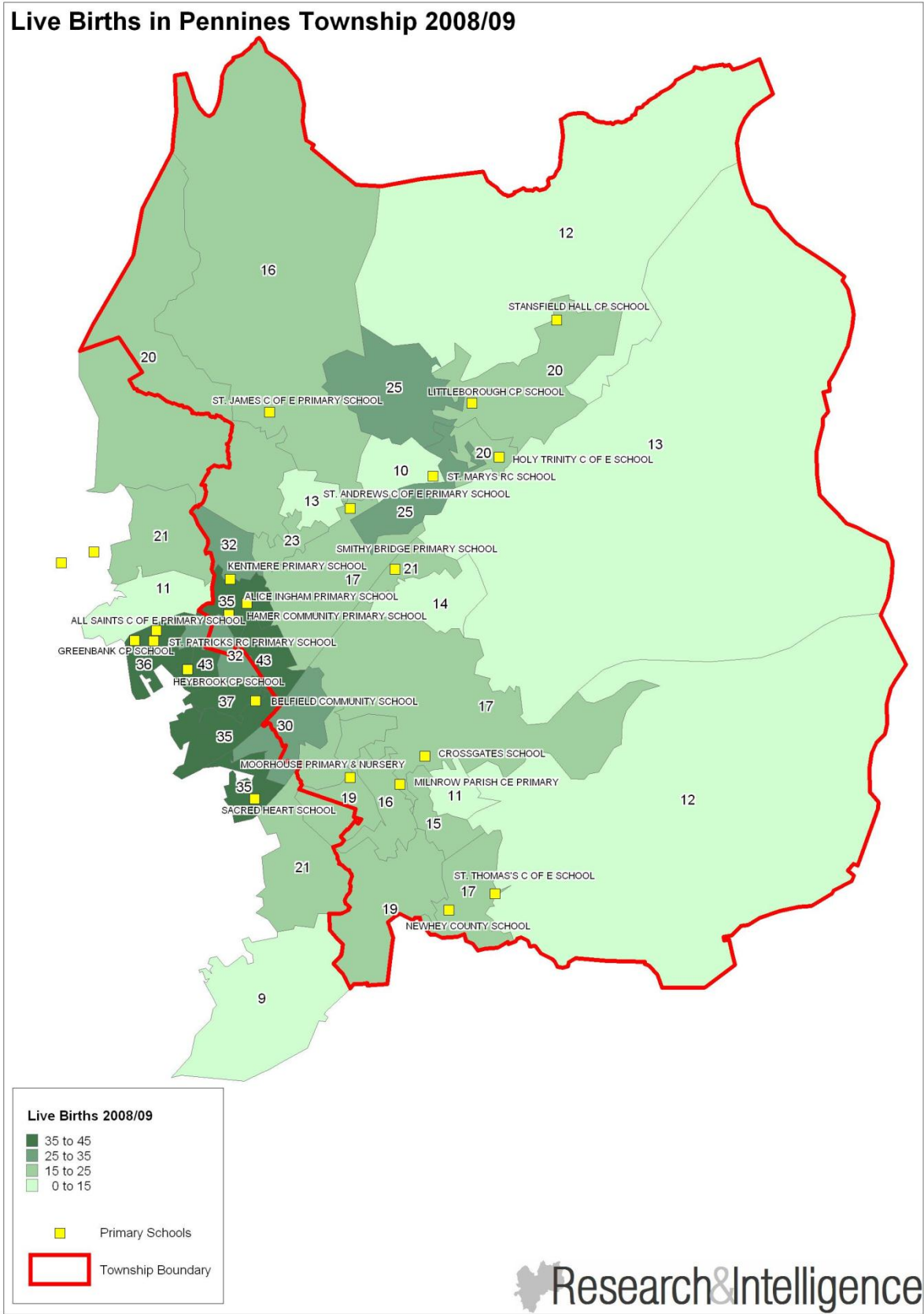
APPENDIX TWO: RESPONSES TO CONSULTATION

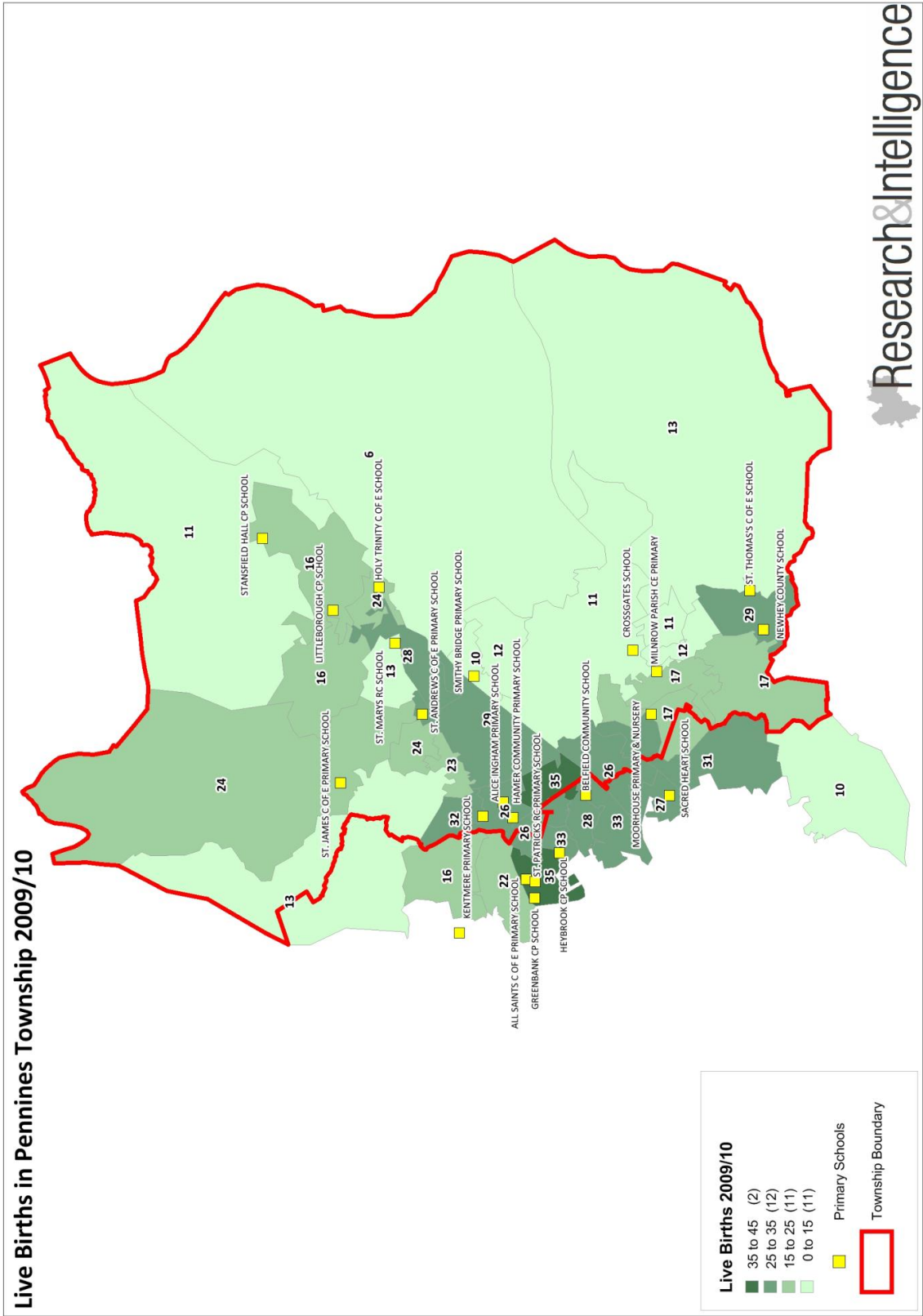
These can be found at DOCUMENT TWO ABOVE- Pages 18 to 28

APPENDIX THREE: BIRTH DISTRIBUTION MAPS- PENNINES TOWNSHIP

Births 2007-08 for Admission Sept 2012







BIRTH DATA BY WARD PENNINES TOWNSHIP

Pennines- Births by Ward

	births for admission in		
	Sep-13	Sep-14	Sep-15
Littleborough Lakeside	116	100	99
Milnrow and Newhey	108	115	130
Smallbridge and Firgrove	204	198	207
Wardle and West Littleborough	110	114	122
	538	527	558

APPENDIX FOUR: EQUALITY IMPACT ASSESSMENT

Equality Impact Assessment of a Strategy or Project

Service: Early Help & Schools & St.Andrew's CE Primary School Governing Body.	Section: School Organisation & Development & Governing Body St.Andrew's CE Primary School
Responsible Officer: Chris Swift	Name of strategy or project assessed: Significant Enlargement & Change in Age range of St.Andrew's CE Primary School.
Date of Assessment: 1 st July 2013 Officers Involved: Chris Swift	
1.What is the purpose of the strategy/project? <i>(Briefly describe the aims, objectives and purposes of the strategy / project</i>	
<ol style="list-style-type: none"> 1. To change the age range of the school to establish a 26 full-time equivalent (fte) Nursery Class; and 2. Enlarge the school to admit up to an extra 15 children in each successive year group from September 2014. 	
2.Who are the key stakeholders?	
St.Andrew's CE Primary School- Parents, staff, pupils, governors.	

3.Are there any other documents/strategies linked to this strategy/project? Rochdale School Organisation Plan 2010-14 Rochdale Childcare Sufficiency Assessment				
4.Which needs is the strategy/project designed to meet? Ensure that there are enough school places in the area by providing an additional 15 Reception Class places and the addition of a 26 fte nursery class at St.Andrew's CE Primary school to provide more free part-time places to meet the entitlement for 3-4 year olds and also the new entitlement for 2 year olds.				
5.Has a needs analysis been undertaken? The Local Authority has a duty to ensure there are sufficient school places. Each year an analysis is undertaken of the supply and demand for school places. The analysis and proposed ways of meeting the need for extra Reception class places is then the subject of consultation. The recent needs analysis and consultation documents can be found on the council website. The increase in births in the area will lead to an increase in demand for both nursery and school places. In November 2012 consultation was undertaken on the need for Extra Reception Class places in Pennines Township. the overall position for the Township is as follows:				
	Sept 2103	Sept 2014	Sept 2015	Sept 2016
Current Reception Admission Places	416	416	416	416
Expected Pupil Numbers	409	405	452	444
Extra Places Needed	7 surplus	11surplus	36 shortfall	28 shortfall
The Township comprises different community areas, with different birth and demographic				

characteristics, so more detailed analysis of Birth data by lower level super output area provided an evidence base for changes in demographic demand at a more localized level and taken with patterns of parental preference suggests the localities where additional school places might be provided. On that basis Cabinet on 28th January 2013 agreed to putting 15 extra admission places at St. Andrew's CE primary school to meet the expected local shortfall in places.

The table below sets out the birth, place availability and preference situation across the Township in September 2012, together with the position for 2013. For 2014 and 2015 it shows the birth and place availability. Birth data at **Ward level** indicates an increase in demand for 2016 compared to 2015 in Littleborough Lakeside (up by 21 births) and Smallbridge and Firgrove (up by 12 births). However births in Wardle and West Littleborough are down by 8 births and Smallbridge and Milnrow and Newhey by 16 births). The overall position remains that across the township an extra form of entry will be needed to match demographic demand in 2016.

Area /Locality (not Ward)	September 2012 Admission				September 2013 Admission					September 2014 Admission			September 2015 Admission		
	Births	Places	First Preferences	Places Offered	Births	Places	Shortfall/ surplus	First Preferences	Places Offered at 6th June	Births	Places	Shortfall/ surplus	Births	Places	Shortfall/ surplus
Littleborough	123	140	124	130	125	140	+15	121	127	114	140	+26	123	140	+17
Wardle	40	30	40	30	36	30	-6	32	30	37	30	-7	41	30	-11
Smithy Bridge	103	90	84	102	88	90	+2	93	93	98	90	-8	98	90	-8
Milnrow	100	105	86	104	108	105	-3	92	103	94	105	+11	110	105	-5
Newhey	52	51	68	51	48	51	+3	57	58	59	51	-8	59	51	-7
TOTAL	418	416	402	417	405	416	+11	395	411	402	416	+12	431	416	-15
Smallbridge area schools:															
Smallbridge	155	114	41		126	114	-12		120	106	114	+8	111	114	+3

The Governing Body of the school has written to the Local Authority requesting consideration of the establishment of a Nursery Class. In considering this request the local authority has taken account of the early years and childcare sufficiency assessment for the Ward, and on the basis of current provision and places for 3-5 year olds, additional places will help meet the increased number of children. There are currently 168 children eligible for the Free Entitlement to nursery places, and 172 places in the Ward- 102% coverage.

The school is in an area of increasing deprivation- evidenced by the increase in eligibility for free school meals from 20.9% in 2012 to 35% in 2013, much higher than other schools in the area.

It is important that sufficient places are provided overall for both Nursery and Reception places, without providing too many (because that could adversely affect other schools and providers viability if too many places are provided). School places should be provided so that all children can access a school place within a reasonable distance from their home.

6. Who is affected by the strategy/project?

Parents, neighbouring schools and early years providers are the main groups affected by an increase in provision. In addition to these users and providers there is statutory guidance on who must also be consulted. These additional groups include: staff at the school, Diocesan Authorities, Secretaries of recognised Trades Unions, elected members, the local MP and neighbouring Local Authorities.

Whilst all of the responses from the school community support the establishment of a nursery class and the majority of responses support the enlargement of the school, some parents have expressed concerns that the school will be too big.

<i>Five neighbouring schools have also responded, and are opposed to both the establishment of a nursery class and the enlargement of the school.</i>
7. Who has been involved in the development of the strategy/project and who has been consulted? State your consultation/involvement methodology.
<i>The Local Authority has developed the project to enlarge the school. The Governing Body will implement the proposals.</i>
<i>The consultation letter was sent to parents, pupils, staff and governors of the school, Headteachers and Governing Bodies of schools in Pennines Township, Secretaries of Recognised Trades Unions, neighbouring Local Authorities, Salford and Manchester Diocesan Authorities, MP for Rochdale, Pennines Township Councillors, Private and Voluntary Early Years Providers, The Early Years and Childcare Partnership and St. Andrew's Parochial Church Council.</i>
<i>Consultation was undertaken in late Autumn Term 2012. The consultation paper indicated that whilst across the Township as a whole there were enough places for 2013 and 2014, applications needed to be monitored to respond to localised admission pressures. No responses were received in respect of the school place demand in Pennines Township, even though the consultation invited alternative proposals.</i>
<i>The published statutory Prescribed Information sets out the responses to the consultation and a commentary on them.</i>
8. What data have you considered for this assessment and have any gaps in the data been identified. What action will be taken to close any data gaps?
<i>Birth Data provided at post-code level for the period to admissions in September 2016, school census data and for the analysis of place demand for 3-4 year old entitlement- the Rochdale Childcare Sufficiency Assessment.</i>
9. What impact will the strategy/project have on all the protected groups?
<i>Overall, increasing the number of school places in a locality, and the establishment of a new nursery class will be of benefit to all parts of the community. In respect of the protected Groups:-</i>
Race Equality
<i>The proposed changes do not have an adverse impact on race equality considerations. The increase in school places and the additional Nursery class will extend the opportunity for parental choice.</i>
Disabled People
<i>The proposed changes do not have an adverse impact on disabled people. The additional accommodation will be compliant with meeting the needs of children and adults with disabilities.</i>
Carers
<i>The proposed changes do not have an adverse impact on carers.</i>
Gender
<i>The proposed changes do not have an adverse impact based on gender considerations</i>
Age
<i>The proposed changes will increase the number of school and Nursery places available, and so will increase the scope to meet parental preference, and access to a nearby school.</i>
Ex-Armed Forces Personnel
<i>The proposed changes will increase the number of school and Nursery places available, and so will increase the scope to meet parental preference, and access to a nearby school, especially where</i>

<i>families move into the area outside the normal admissions round.</i>
Religion or Belief
<i>The proposed changes do not have an adverse impact on religion or belief considerations. The proposed additional places are in a voluntary controlled Church of England school. The school promotes a Christian ethos.</i>
Sexual Orientation
<i>The proposed changes do not have an adverse impact on sexual orientation considerations.</i>
Gender Reassignment
<i>The proposed changes do not have an adverse impact on gender reassignment considerations.</i>
Pregnant Women or Those on Maternity Leave
<i>The proposed changes do not have an adverse impact on pregnant women or those on maternity leave. The establishment of a nursery class will provide more choice for parents of young children.</i>
Marriage or Civil Partnership
<i>The proposed changes do not have an adverse impact on marriage or civil partnership considerations.</i>
10.What are your main conclusions from this analysis?
<i>There is a need for additional Reception Class places in the area in the period to September 2016. There are not enough places to meet the part-time entitlement to a nursery place for all 3-4 year olds in the area, and the extension of the entitlement to 2 year olds means that additional capacity in the area will help meet that need. This will also mean that there is more opportunity for parental choice.</i>
11.What are your recommendations?
<i>The additional school places and new nursery class will improve parental choice in the area as well as ensure that the Authority can meet it's duty to provide enough school places. Cabinet will be recommended to consider the report on the consultation and decide whether to publish statutory proposals for the enlargement of the school, and to indicate whether it wishes to support the establishment of a new nursery class at St.Andrew's.</i>
12.What equality targets and actions have you set based on the findings of this assessment? Please attach an action plan including details of designated officers responsible for completing these actions.
<i>As the proposals do not have an adverse impact on the protected groups, there are no targets. The Action Plan, however, sets out the process for implementing the proposals if agreed by Cabinet in September.</i>

Signed (Completing Officer):_____Chris Swift ____ Date:_____17th June 2013

Signed (Head of Service): _____ Date:_____

Signed (chair Of Governors): _____ Date:_____

Equality Impact Assessment Action Plan 2013/14

Action	Outcome	Target Date for Completion	Resource Implications	Lead Officer
Public Consultation on proposals (starts 19-04-13)	Consultees and interested parties able to express their views about the proposals.	Consultation ends 17-06-13	Preparation, distribution & dissemination of consultation documents	Chris Swift
Consideration of outcomes of consultation, and decisions on whether to publish statutory proposals.	Report to Cabinet with recommendation on whether to proceed with the proposals.	Cabinet 01-07-13	Preparation of Report for Cabinet	Chris Swift
Further public Consultation on proposals 08-06-13	Consultees and interested parties able to object to proposals	Representation period ends 16-08-13	Preparation, distribution & dissemination of consultation documents, cost of publication of Notice in local press	Chris Swift
Determination of proposals	Cabinet considers representations and determines proposals	Cabinet 16-09-13	Preparation of Report for Cabinet	Chris Swift
Implementation of Proposals (if approved).	Additional accommodation provided at the school, additional teaching groups established for Nursery Class and Reception Class.	1st September 2014	Capital resources through approved Capital programme. Revenue funding for Nursery class through the Early Years Single Funding Formula, and for the Reception Class through the Fair Funding Formula.	Chris Swift / Governing Body

1. Governing Body Proposal- Change in Age range to Add a Nursery Class

Rochdale Metropolitan Borough Council

St. Andrew's Church of England Primary School (Dearnley)- Proposal to Add a Nursery Unit

Notice is given in accordance with section 19(3) of the Education and Inspections Act 2006 that the **Governing Body of St. Andrew's CE Primary (Dearnley)** intends to make a prescribed alteration to St. Andrew's CE (Dearnley), Voluntary Controlled School, Union Road, ROCHDALE, OL12 9QA from 1st September 2014.

The proposed alteration is to change the age range of the school to add a 26 full time equivalent place nursery class.

The current capacity of the school is 210 and the proposed capacity will be 315. The current admission number for the school is 30 and the proposed admission number will be 45.

The Governing Body will implement this proposal.

This Notice is an extract from the complete proposal. Copies of the complete proposal can be obtained from: dawn.jennings@rochdale.gov.uk, or by writing to Dawn Jennings, School Support Officer, Early Help and Schools, Rochdale Metropolitan Borough Council, Number One Riverside, Smith Street ROCHDALE OL16 1XU.

Within six weeks from the date of publication of this proposal, any person may object to or make comments on the proposal by sending them to dawn.jennings@rochdale.gov.uk, or in writing to Dawn Jennings, School Support Officer, Early Help and Schools, Rochdale Metropolitan Borough Council, Number One Riverside, Smith Street ROCHDALE OL16 1XU. The closing date for representations is midnight on 16th August 2013.

Signed:

Mr.G.Walczak

Chair of Governors, for and on behalf of the Governors of St. Andrew's CE (Dearnley).

Publication Date: 6th July 2013

Explanatory Notes

1. The cost of additional accommodation for the new nursery unit would be met by the Local Authority if the proposals are approved.
2. Admission to the nursery class neither guarantees nor gives priority to a place at the school.
3. These proposals are linked to proposals published today by Rochdale Local Authority to significantly enlarge the school.

2. Local Authority Proposal- Significant Enlargement of the School

Rochdale Metropolitan Borough Council

St. Andrew's Church of England Primary School (Dearnley) - Proposal to Enlarge the School

Notice is given in accordance with section 19(1) of the Education and Inspections Act 2006 that **Rochdale Metropolitan Borough Council** intends to make a prescribed alteration to St. Andrew's CE (Dearnley), Union Road, ROCHDALE, OL12 9QA from 1st September 2014.

The proposed alteration is to enlarge the school to admit a further 15 children in each new year group.

The current capacity of the school is 210 and the proposed capacity will be 315. The current number of pupils registered at the school is 213. The current admission number for the school is 30 and the proposed admission number will be 45.

The Local Authority will implement the proposal.

This Notice is an extract from the complete proposal. Copies of the complete proposal can be obtained from: dawn.jennings@rochdale.gov.uk, or by writing to Dawn Jennings, School Support Officer, Early Help and Schools, Rochdale Metropolitan Borough Council, Number One Riverside, Smith Street ROCHDALE OL16 1XU.

Within six weeks from the date of publication of these proposals, any person may object to or make comments on the proposal by sending them to dawn.jennings@rochdale.gov.uk, or in writing to Dawn Jennings, School Support Officer, Early Help and Schools, Rochdale Metropolitan Borough Council, Number One Riverside, Smith Street ROCHDALE OL16 1XU. The closing date for representations is midnight on 16th August 2013.

Signed:

Gladys Rhodes-White OBE
Director of Children's Services

Publication Date: 6th July 2013

Explanatory Notes

- 1.The cost of additional accommodation would be met by the Local Authority if the proposals are approved.
- 2.These proposals are linked to proposals published today by the Governing Body of St. Andrew's CE (Dearnley) to add a nursery class at the school.

..... DOCUMENT ENDS