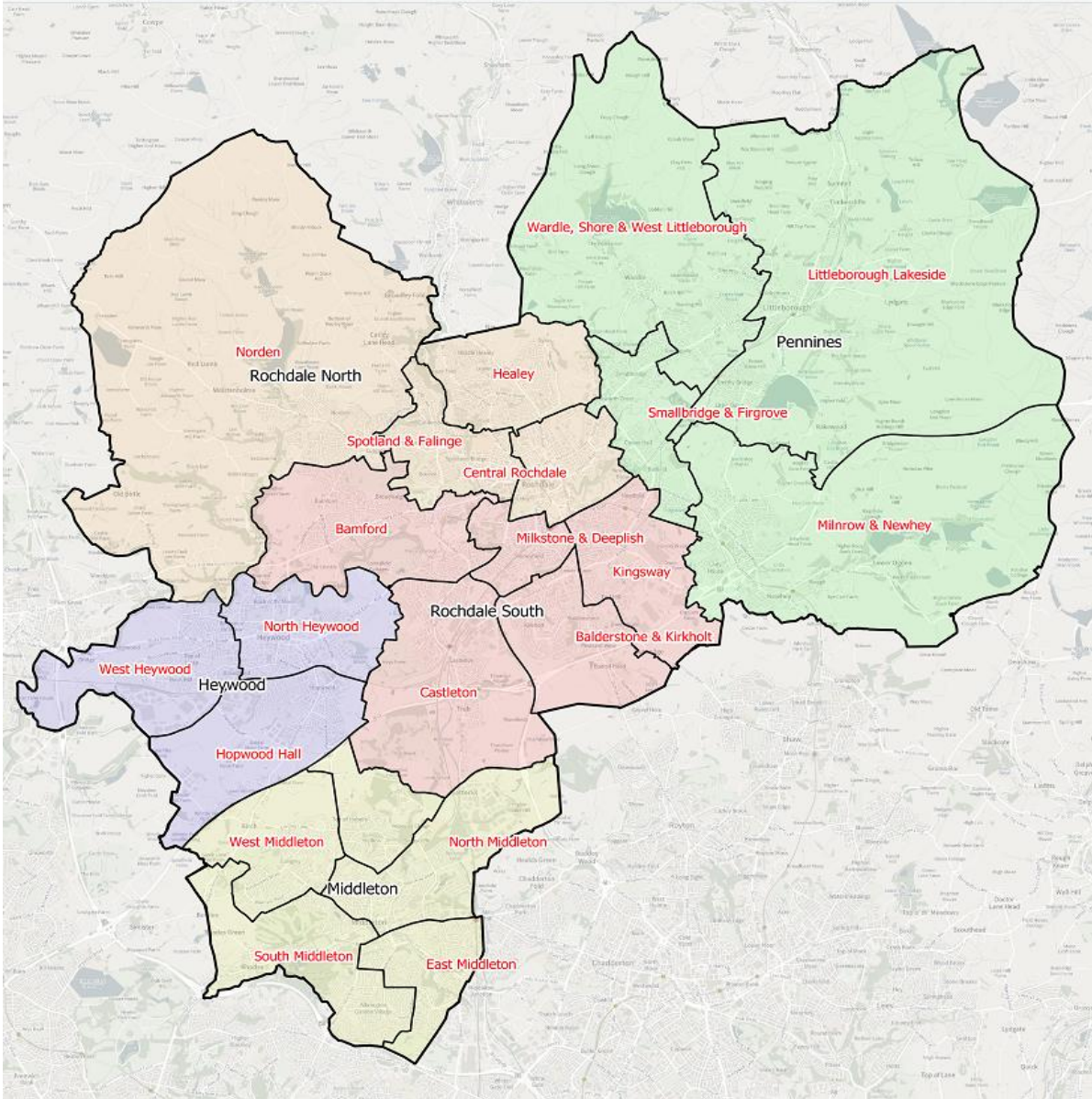


**Appendix 1, Section 1 - Map of Restricted Area**



## **Appendix 1, Section 2 – Draft Public Spaces Protection Order**

### **ROCHDALE BOROUGH COUNCIL**

#### **Anti-Social Behaviour, Crime and Policing Act 2014,**

#### **Section 59**

#### **Public Spaces Protection Order (Borough wide)**

**2024**

This Order is made by Rochdale Borough Council ("the Council") under the Anti-Social Behaviour, Crime and Policing Act 2014, Section 59 ("the Act").

1. This Order relates to all areas within the Borough of Rochdale (as shown on attached map), including public space in the Council's area and privately owned land made available to the public, to which the Act applies ("the Restricted Area").
2. The Council is satisfied that the two conditions below have been met, in that:-
  - activities carried on in the restricted area as described below have had a detrimental effect on the quality of life of those in the locality, or it is likely that these activities will be carried on in the public place and they will have such an effect;
  - the effect, or likely effect, of the activities is, or is likely to be, of a persistent or continuing nature, is, or is likely to be, such as to make the activities unreasonable, and justifies the restrictions imposed by the Order.

### **3. Definitions**

In this Order:

- 3.1 "Alcohol" has the meaning given by section 191 of the Licensing Act 2003;
- 3.2 "Authorised Person" means a Police Constable, Police Community Support Officer or an officer of the Council in possession of a signed authority to enforce this Order;
- 3.3 "Public Place" means any place to which the public or any section of the public has access, as of right or by virtue of express or implied permission;
- 3.4 "Mechanically Propelled Vehicles" includes, but is not limited to:
  - Motorbikes (road going and off road) including mini "pee-wee" bikes
  - Electrically propelled motor bikes
  - Scooters
  - Quad Bikes and mini quad bikes
- 3.5 Vehicles for use by a person with a mobility impairment, and being used by someone with a mobility impairment are exempt from the Order

## **By this Order**

4. The effect of the Order is to impose the following prohibitions and/or requirements in the Restricted Area at all times, unless specifically stated-

### **a) Consumption of alcohol in public areas, away from licensed premises.**

It will constitute an offence should any person, when requested by an authorised officer, not cease from drinking alcohol in a public place away from licensed premises and not surrender any opened vessels of alcohol.

Any unopened alcoholic drinks may be subject to confiscation or disposal should the officer believe the person is either;

- i. Under 18 years of age
- ii. Intoxicated
- iii. Likely to consume the alcohol in public and cause nuisance if left with them

### **b) Mechanically Propelled Vehicles**

Mechanically propelled vehicles ("MPV") are prohibited from being used on any publically owned land in the borough, or on any other land without express or implied permission.

A person is prohibited from having a MPV in their possession but not being ridden when in a public space or on a highway or pavement, unless they can produce appropriate insurance for use of the MPV on a public highway.

The only exception will be granted for persons wheeling a MPV to a clearly identified van or trailer for onwards transportation.

### **Offences under this Public Spaces Protection Order:**

- a) A person who is guilty of an offence shall on summary conviction be liable to a fine not exceeding level 3 on the standard scale.
- b) A Fixed Penalty Notice of £100.00 will be issued to offenders (reduced to £60.00 if paid within 14 days) which would discharge any liability to conviction for an offence under Section 67(1) of the Act.
- c) This order may be cited as 'The Public Spaces Protection Order (Borough wide 2024)' and shall come into force on (date of commencement) and remain in force for a period of three years.

## Appendix 2, Section 1 - GMP incident data in relation to off road vehicles

Row Labels	Count of Beat
P1A2 - Wardleworth	4
P1A3 - Townhead and Foxholes	2
P1B1 - Oakenrod and Half Acre	3
P1B2 - Brimrod	1
P1B4 - Roch Valley	5
P1B6 - Bamford	1
P1C3 - Woodhouse	2
P1C4 - Caldershaw	1
P1C5 - Norden Farmland	3
P1D1 - Greave	2
P1D3 - Cutgate	2
P1D4 - Brotherod and Stone Hill	2
P1D5 - Spotland Fold and Meanwood	14
P1D7 - Rooley Moor	1
P1E1 - Shawclough	3
P1E2 - Healey	2
P1E3 - Thrum Hall	1
P1E4 - Syke and Fieldhouse	4
P1E5 - Healey Farmland	4
P1G1 - Sparthbottoms	2
P1G2 - Freehold	3
P1G3 - Milkstone	3
P1G4 - Deeplish	7
P1W1 - Rochdale Town Centre North	6
P1W2 - Rochdale Town Centre South	13
P2F1 - Kingsway Industrial Estate	5
P2F2 - Turf Hill	1
P2F4 - Sandfield	3
P2F5 - Newbold and Waithlands	3
P2F6 - Palatine and Rosefield	1
P2F7 - Newbold Brow	2
P2H1 - Kirkholt	11
P2H2 - Dicken Green and Wellfield	5
P2H4 - New Broad Lane	1
P2I1 - Meadway and Sudden	4
P2I2 - Castleton East	7
P2I3 - Castleton West	1
P2I4 - Chesham and Slattocks	2
P2I5 - Castleton Industrial	1
P2I6 - Castleton Farmland	3
P2I7 - Stake Hill	1
P2Q2 - Birch Hill	1
P2Q3 - Wardle	1
P2Q4 - Starring	4
P2Q6 - Dearnley	1
P2Q7 - Wardle Farmland	1
P2R1 - Littleborough Town Centre	6
P2R2 - Caldermoor	2

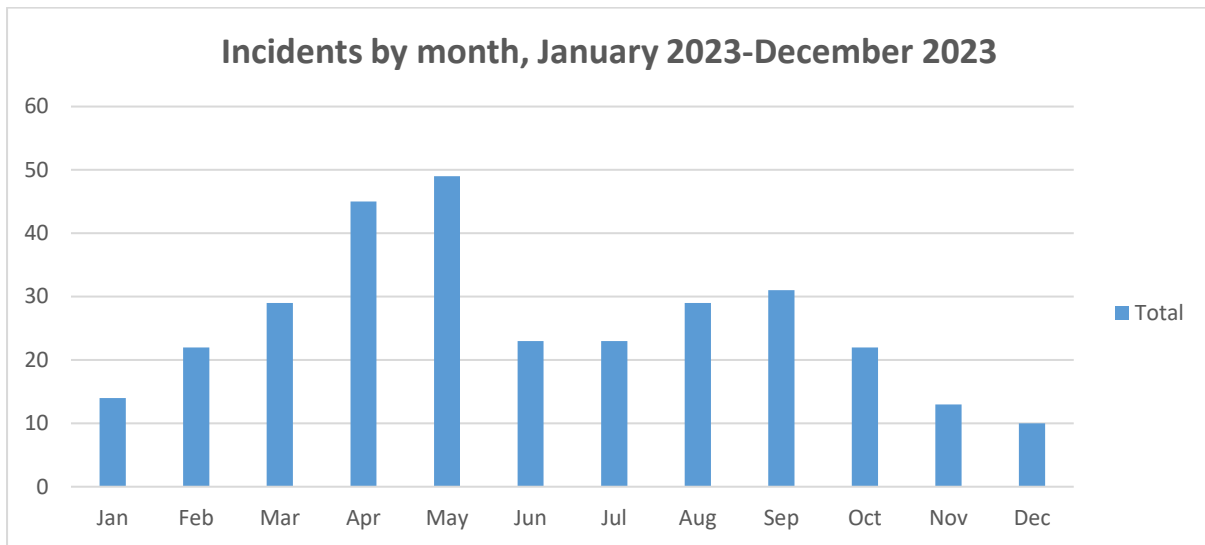
P2R3 - Stansfield and Summit	1
P2R4 - Hollingworth and Akzo	1
P2R6 - Smithybridge	2
P2R7 - Littleborough Farmland	4
<b>P2S1 - Milnrow</b>	<b>13</b>
P2S2 - Silver Hill	2
P2S3 - Newhey	3
P2S4 - Bentgate	6
P2S5 - Ladyhouse	6
P2S6 - Milnrow Farmland	3
P2T1 - Hurstead and Green Meadow	2
P2T2 - Great Howarth	1
P2T4 - Belfield	4
P2T6 - Firgrove	5
P2T7 - The Cray	1
P3J1 - Middleton Town Centre	5
P3J2 - Cheapside	5
P3J4 - Stannycliffe	6
P3J5 - North Middleton Farmland	2
P3K1 - Alkington East	1
P3K2 - Moorclose and Mills Hill	8
P3L1 - Limefield	5
P3L3 - Rhodes	3
P3L4 - Alkington Woods	1
P3L5 - Alkington West	4
P3L6 - Baguley Crescent	7
<b>P3M2 - Langley West</b>	<b>12</b>
P3M3 - Langley East	4
P3M4 - Hollins	5
P3M6 - Bowlee and Birch	2
P3N1 - Heywood Town Centre	4
P3N2 - Back o'th Moss	4
P3N4 - Captain Fold	1
P3O1 - Broadfield	2
P3O2 - Darnhill	6
P3O3 - Heady Hill	6
P3O4 - Summit	2
P3O5 - Farmland and Prettywood	2
P3P1 - Siddal Moor and Newhouse	1
<b>Grand Total</b>	<b>310</b>

## Appendix 2, Section 2 – Example REACT report

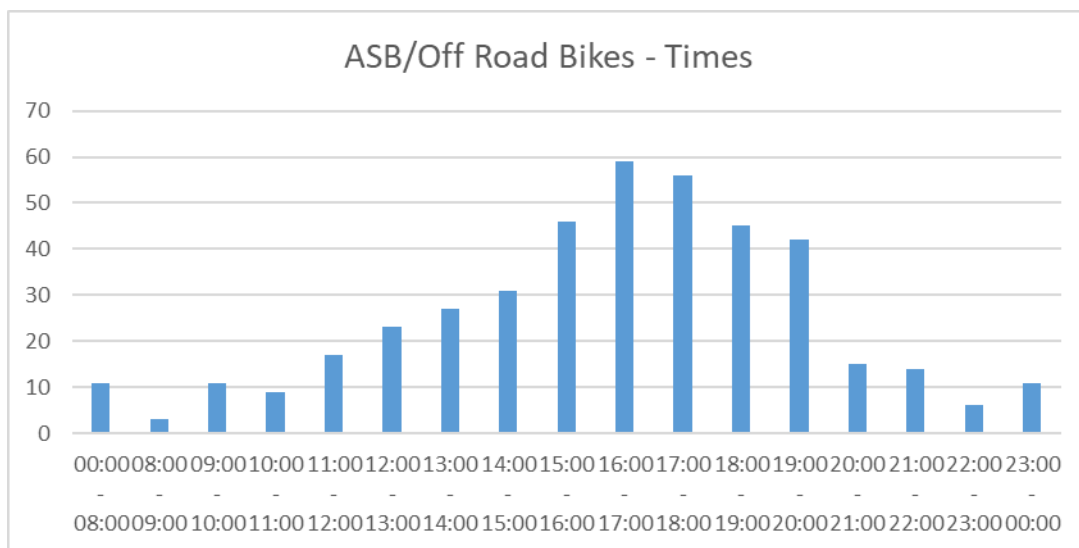
Describe the nature of the problem. Try and give as much information as you can.

Teenagers and adults hanging around at the address all afternoon and well into the evening. The resident and youths spend hours riding up and down local streets on motorbikes and quad bikes doing wheelies, revving engines, speeding and causing a nuisance to all who live around here. The were balaclavas instead of helmets and also deal in drugs

### Appendix 2, section 3.



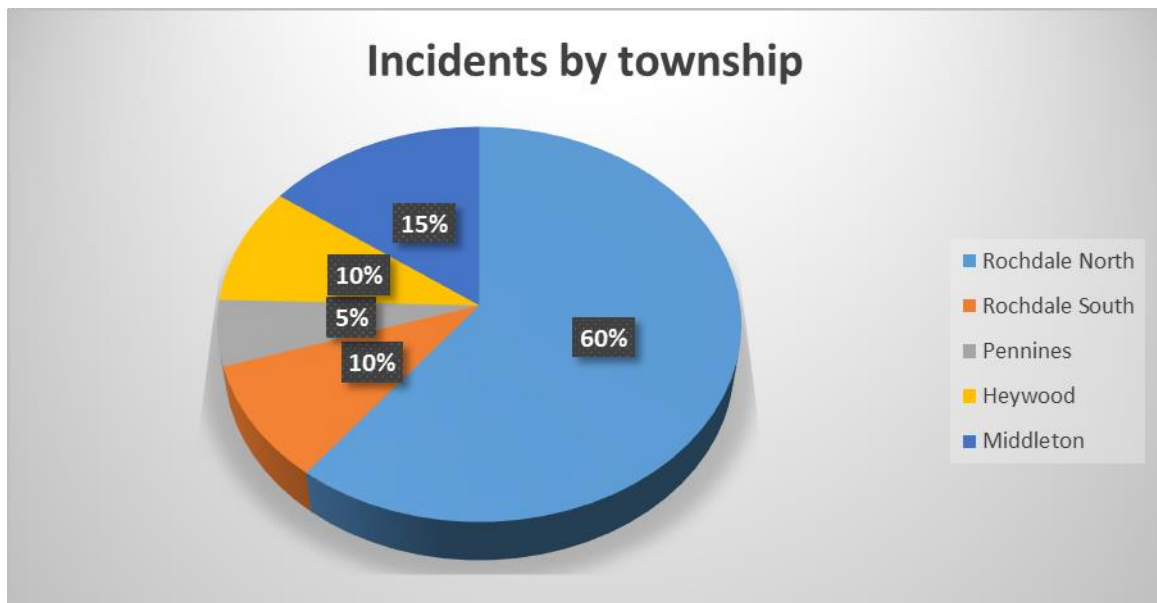
### Appendix 2, section 4.



## Appendix 2, Section 5 – GMP incident data in relation to ASB involving alcohol - January 2023 to December 2023

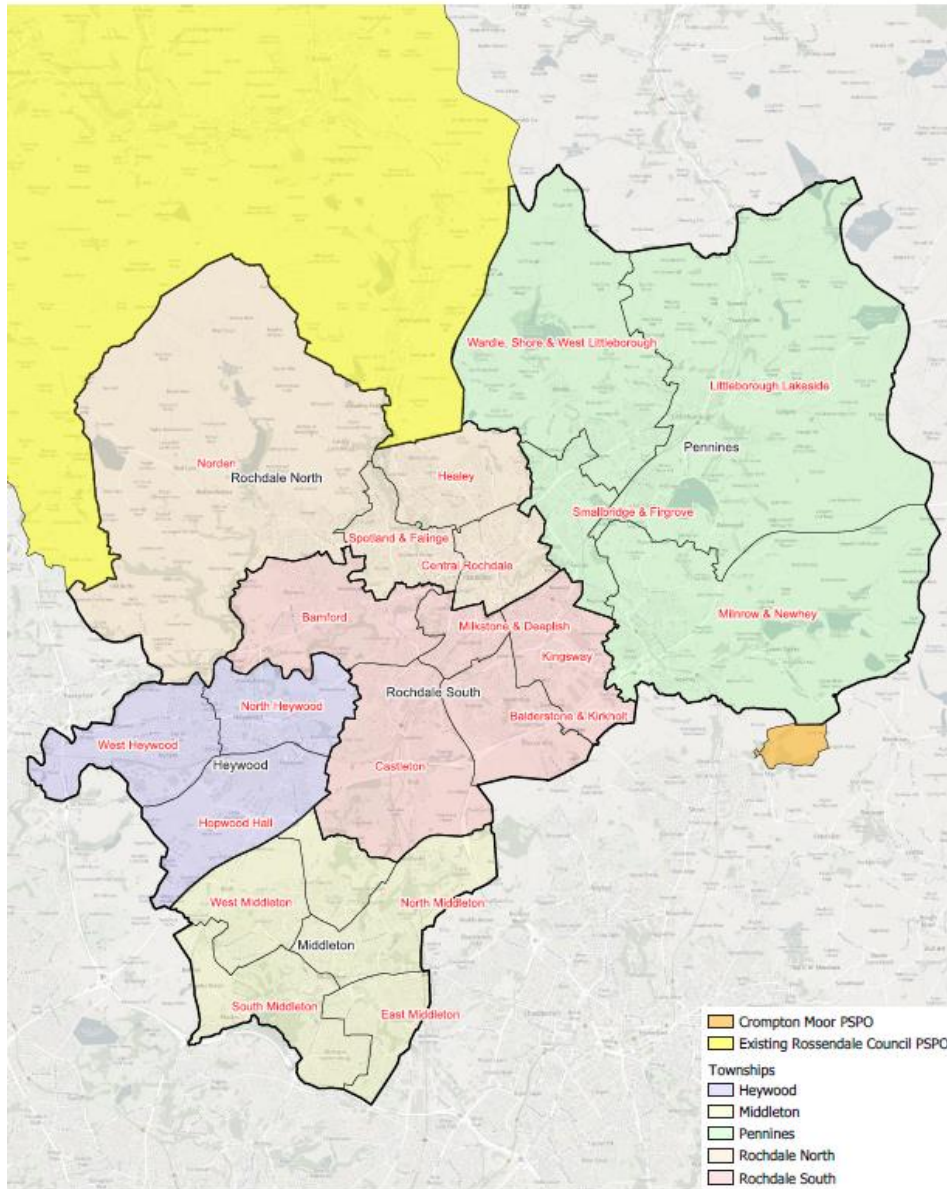
Row Labels	Count of Beat
P1A3 - Townhead and Foxholes	1
P1A4 - Falinge	3
P1D5 - Spotland Fold and Meanwood	1
P1D6 - Spotland	1
P1G3 - Milkstone	3
P1W1 - Rochdale Town Centre North	13
P1W2 - Rochdale Town Centre South	21
P2F1 - Kingsway Industrial Estate	1
P2F5 - Newbold and Waithlands	1
P2F6 - Palatine and Rosefield	1
P2H1 - Kirkholt	1
P2H4 - New Broad Lane	1
P2I2 - Castleton East	2
P2Q3 - Wardle	2
P2R2 - Caldermoor	1
P2R6 - Smithybridge	3
P2S1 - Milnrow	1
P2S4 - Bentgate	1
P2T4 - Belfield	1
P3J1 - Middleton Town Centre	2
P3J2 - Cheapside	1
P3J3 - Boarshaw	1
P3J4 - Stannycliffe	1
P3K2 - Moorclose and Mills Hill	1
P3L1 - Limefield	3
P3L3 - Rhodes	1
P3M2 - Langley West	1
P3M3 - Langley East	2
P3M4 - Hollins	1
P3M6 - Bowlee and Birch	1
P3N1 - Heywood Town Centre	3
P3O3 - Heady Hill	2
<b>Grand Total</b>	<b>79</b>

## Appendix 2, Section 6



## Appendix 2, Section 7.

### Rochdale and Oldham PSPO's





## Appendix 3 - PSPO Questions

### Part A

1. How concerned are you about anti-social behaviour resulting from the consumption of alcohol in public places in the borough of Rochdale over the last year?
  - Not concerned at all.
  - A little concerned.
  - Somewhat concerned
  - Very concerned
2. Have you witnessed anti-social behaviour resulting from consumption of alcohol in public places in the borough of Rochdale over the last year?
  - Yes
  - No
3. If yes, how often have you witnessed antisocial behaviour resulting from the consumption of alcohol in public places in the last year?
  - Once or twice a year
  - Several times a year
  - On a monthly basis
  - Several times a month
  - On a weekly basis
  - On a daily basis
4. Do you support the implementation of the (Title?) PSPO to prohibit the consumption of alcohol in public spaces in the borough of Rochdale?
  - Yes.
  - No
5. Do you have any further comments to add on this issue?  
(Open text box)

### Part B

1. How concerned are you about anti-social behaviour resulting from the use of mechanically propelled vehicles (MPVs) on public spaces and/or open land in the borough of Rochdale over the last year?
  - Not concerned at all
  - A little concerned
  - Somewhat concerned
  - Very concerned
2. Have you witnessed anti-social behaviour resulting from the use of MPVs on public spaces and/or on open land in the borough of Rochdale over the last year?
  - Yes
  - No

3. If yes, how often have you witnessed antisocial behaviour resulting from the use of MPVs on public spaces and on open land in the borough of Rochdale over the last year?
  - Once or twice a year
  - Several times a year
  - On a monthly basis
  - Several times a month
  - On a weekly basis.
  - On a daily basis
  
4. Do you support the implementation of the (Title?) PSPO to prohibit the use of MPVs on public spaces and open land in the borough of Rochdale?
  - Yes
  - No
  
5. Do you have any further comments to add on this issue?  
(Open text box)