

CONSULTATION PAPER

Need for Extra Primary School Reception Class Places from now until September 2016

PENNINES TOWNSHIP

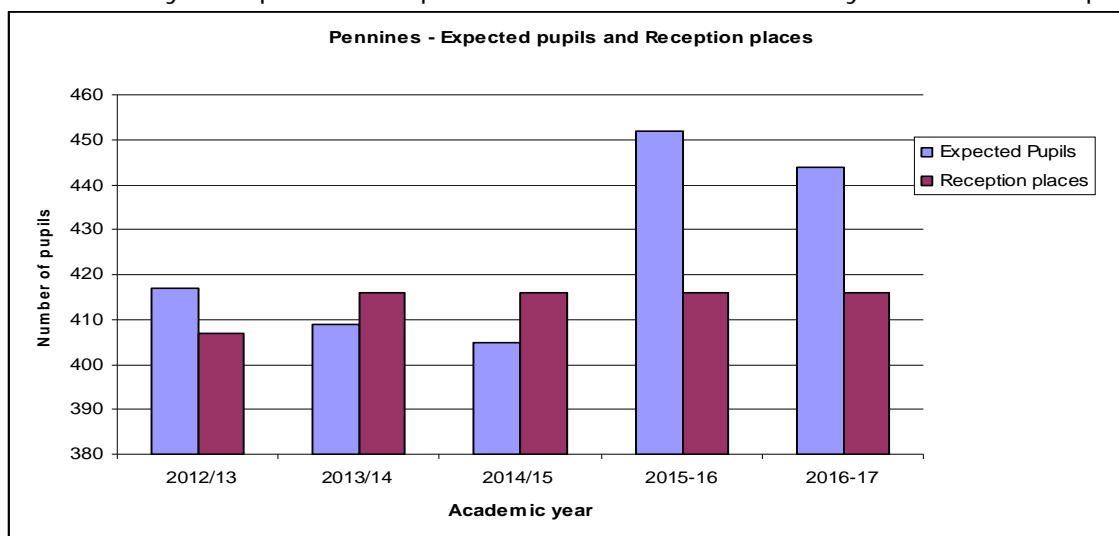


To: Parents and carers of children in Pennines Township, Headteachers, staff and governors of Pennines Township primary schools, Early Years providers, Pennines Township Councillors, Secondary Headteachers, Secretaries of Recognised Trades Unions, Manchester and Salford Dioceses.

1. What is this Letter about?

The Local Authority is looking at how many extra Reception Class places are going to be needed in the next few years. The reason for this letter is to tell you how many extra places are likely to be needed in Pennines Township, and to ask your views about where these places should be provided.

2. How many Reception Class places are there and how many children are expected?



School year	2012/13	2013/14	2014/15	2015-16	2016-17
Expected Pupils	417	409	405	452	444
Reception places	407	416	416	416	416

We made sure there were enough places this September by putting extra places at St Andrews CE and Crossgates Primary Schools. For the academic years 2013 and 2014 there are enough places within the Township, however we may need to monitor admissions to ensure enough places within particular localities. The Graph also shows that for 2015 extra places are likely to be needed in the Pennines Township:- 36 in September 2015; and 28 extra in 2016. Specific proposals for these later years will need to be considered through discussion with schools in the Township and views on where additional places ought to be considered for 2015 and 2016 are invited.

3. Where do you get your information from and how accurate is it?

The Local Authority uses government figures on the actual number of children born in the township, and based on past trends, looks at the proportion of those children who then take up Reception Class places. In some recent years this percentage has been high, so we expect this trend to continue. The projected Reception Class intakes do not take account of the possible effect of any new housing at this stage.

4. What do you take into account to decide where to put extra places?

The Local Authority has to make sure there are enough school places for all children who need them. In deciding the number of extra places needed, it is assumed that all current Reception places will be filled. The Authority has taken into account a number of factors to decide where to put extra places, these are:- distribution of births; physical space in schools; scope to put in extra accommodation; making sure schools can comply with class size limits; and avoiding creating too many extra places. The proposals in the table below show the current thinking to meet the extra need. Alternative proposals and views are invited.

5. How will you put extra space into schools and how will you avoid overcrowding?

The solution is likely to be different for each school. We will look at each school individually - some schools have more space than others and so extra places might be possible by using spare or under-used spaces. In some cases demountable classrooms might be needed. Each year the Authority will need to look closely at the number of applications for places in the Township.

6. How many places are there at each school now?

Planned Admission Number (PAN) capacity for Pennines schools is:

School	PAN	School	PAN	School	PAN	School	PAN
Littleborough	60	St. Andrew's CE VC	30	Moorhouse	30	St Thomas' CE VA	21
Stansfield Hall CE VC	20	Smithy Bridge F	60	Newhey	30	Crossgates F	45
Holy Trinity CE VA	30	St James' CE F	30	Milnrow Parish CE VA	30	St Mary's RC VA	30

VA-voluntary aided, VC-voluntary controlled, F-foundation

7. Where are you thinking of putting extra new places?

	Sept 2013	Sept 2014	Sept 2015	Sept 2016
Current Reception admission places	416	416	416	416
Expected pupil numbers	409	405	452	444
Extra Places Needed	-7	-11	36	28
Where more extra places might be available	Overall there are sufficient places, so there are no specific proposals at the present. However, applications need to be monitored to respond to localised pressures		Further places require detailed analysis of birth data to inform possible options, through discussion with schools in the township. Views on where additional places might be provided are invited.	

8. Where can I find out more?

This letter concerns Pennines Township. Information on the other townships and the full consultation paper is available on the Rochdale MBC website:

http://www.rochdale.gov.uk/council_and_democracy/consultations.aspx

You can also get a copy by writing to the address below.

9. Making your views known:

Your views on the following will be helpful,

* are we proposing enough extra places?

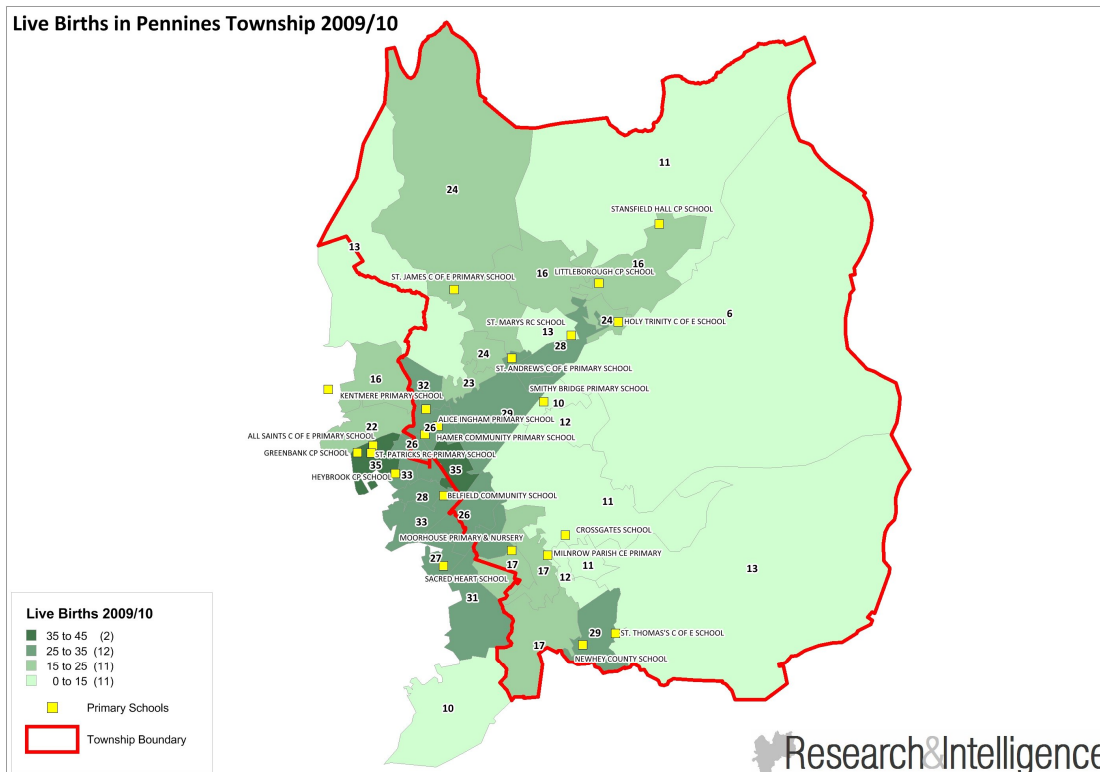
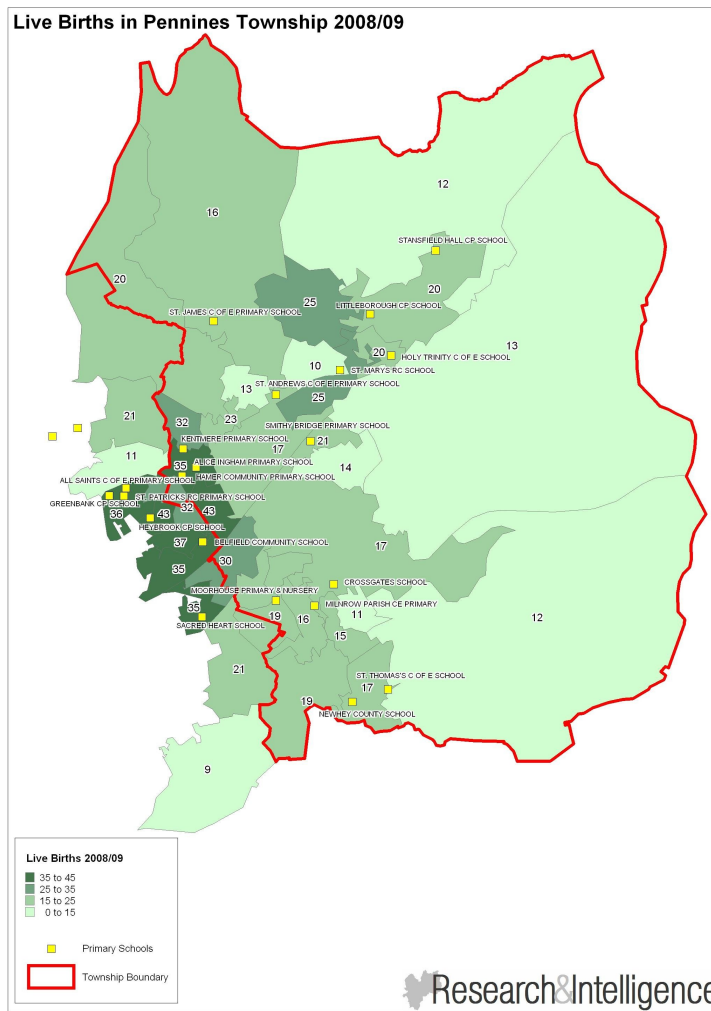
* are the places in the right locality to meet need?

* would you suggest something different about the need for extra Reception places?

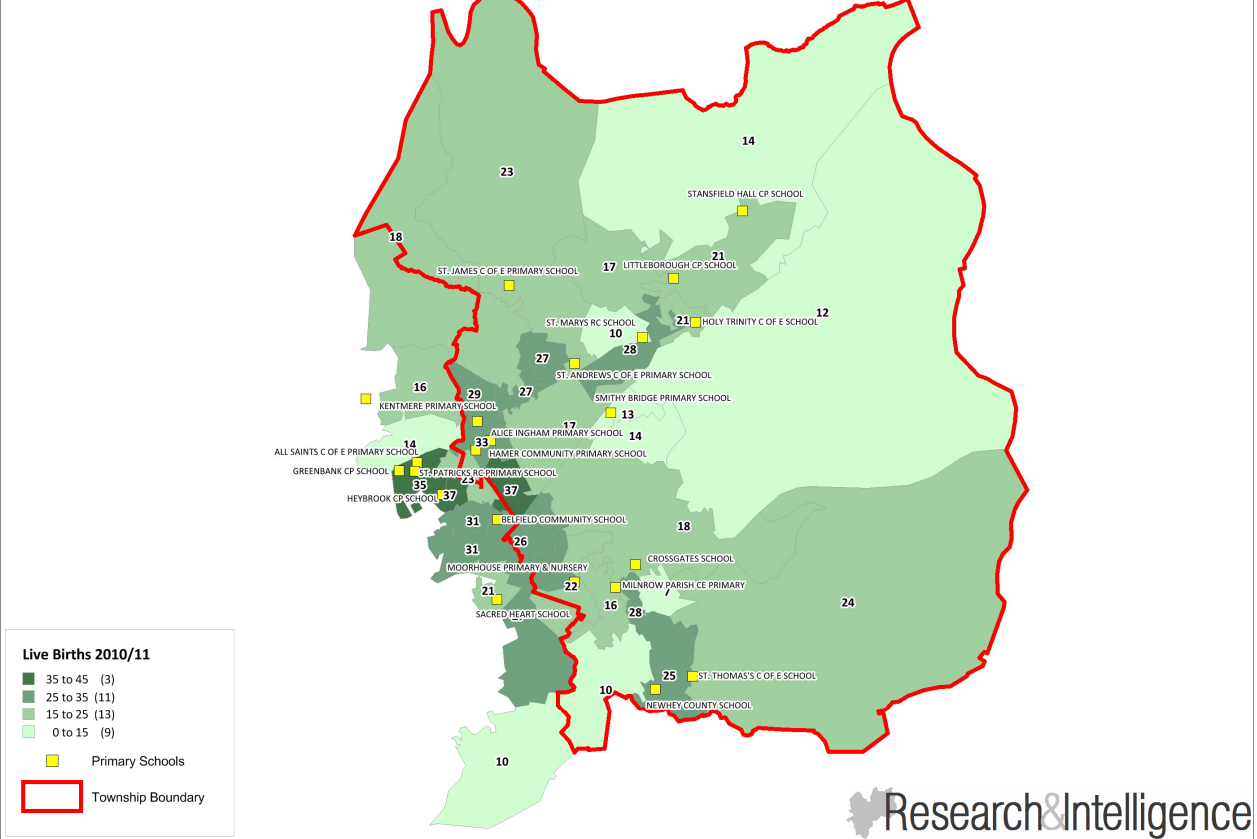
After the closing date a report will go to Cabinet for a final Decision.

Please send any comments or responses directly to Dawn Jennings at the following address:
 Support for Learning Service, PO Box 70, Municipal Offices, Smith Street, ROCHDALE, OL16 1YD.
 e-mail: dawn.jennings@rochdale.gov.uk or via the RMBC consultation page (as above),
 by Friday 21st December 2012

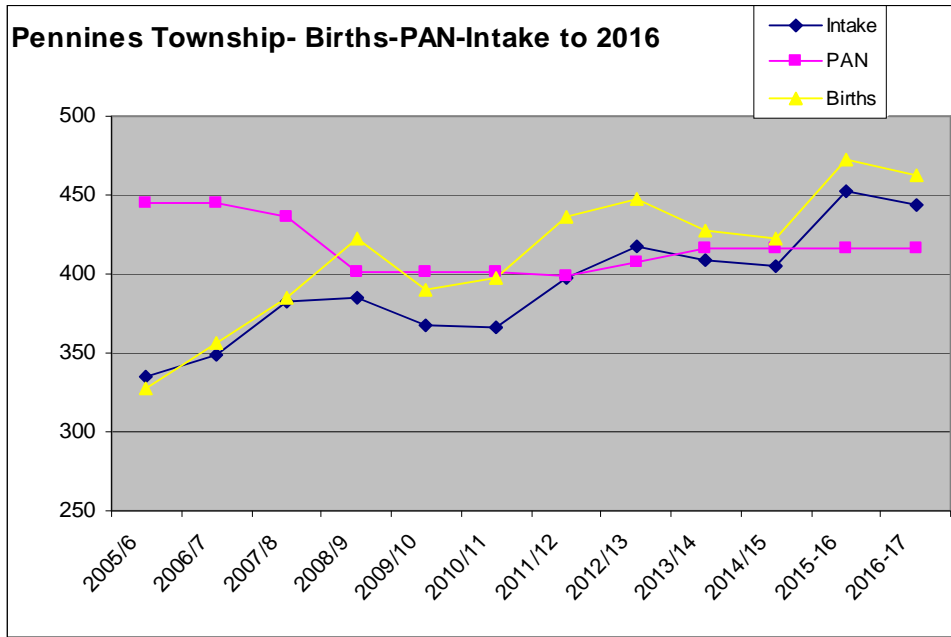
Maps showing the births within Pennines Township for years 2008 - 2011



Live Births in Pennines Township 2010/11



Pennines births to include years 2005 - 2016



PAN - Planned Admission Number

Pennines admissions, preferences and appeals to September 2012

Sep-12	PAN	Extra	no.of	no.of	%	Places		No.of	No.	No.	Places	
Admissions		R	1st Prefs	1st prefs	1st prefs	at 15April		Appeals	Appeals	Appeals	at 21Sept	
School Name		Places	Rec'd	Offered	Offered	Offered	Vacant		Upheld	pending	Offered	Vacant
Pennines												
Alice Ingham RC	24	0	18	14	78%	24	0				24	0
Crossgates	36	9	47	39	83%	45	0				45	0
Hamer	45	0	54	40	74%	45	0	7	0		45	0
Holy Trinity CE	30	0	50	30	60%	30	0	8	0		30	0
Kentmere	45	0	48	42	88%	45	0				46	1
Littleborough	60	0	52	52	100%	60	0				60	0
Milnrow Parish	30	0	13	11	85%	30	0	1	0		30	0
Moorhouse	30	0	26	24	92%	30	0	2	0		30	0
Newhey	30	0	33	21	64%	30	0	5	0		30	0
Smithy Bridge	60	0	57	54	95%	60	0	2	0		60	0
St Andrew's CE	30	30	27	27	100%	38	-22				38	-22
St James' CE	30	0	40	30	75%	30	0	2	0		30	0
St Mary's RC, L'boro	30	0	20	19	95%	26	-4				27	-3
St Thomas' CE	21	0	35	22	63%	21	0	3	1		21	0
Stansfield Hall	20	0	2	1	50%	5	-15				9	-11
Pennines Total	521	39	522	426	82%	519	-41	14	0	0	525	-35

PAN - Planned Admission Number