

# CONSULTATION PAPER

## Need for Extra Primary School Reception Class Places from now until September 2016

### MIDDLETON TOWNSHIP

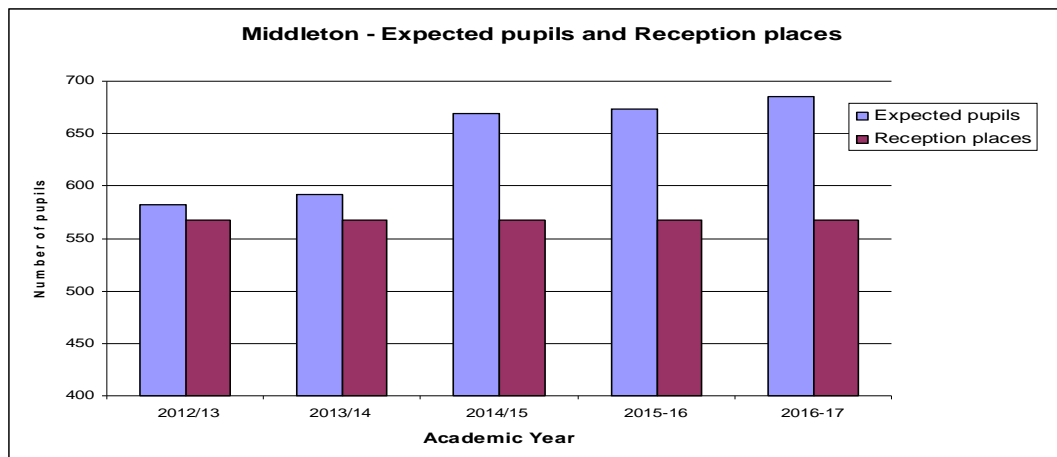


To: Parents and carers of children in Middleton Township, Headteachers, staff and governors of Middleton Township primary schools, Early Years providers, Middleton Township Councillors, Secondary Headteachers, Secretaries of Recognised Trades Unions, Manchester and Salford Dioceses.

#### 1. What is this Letter about?

The Local Authority is looking at how many extra Reception Class places are going to be needed in the next few years. The reason for this letter is to tell you how many extra places are likely to be needed in Middleton Township, and to ask your views about where these places should be provided. A working group has looked in detail at this and this letter is a summary of the key proposals.

#### 2. How many Reception Class places are there and how many children are expected?



School year	2012/13	2013/14	2014/15	2015-16	2016-17
Expected pupils	582	592	669	673	685
Reception places	568	568	568	568	568

We made sure there were enough places this September by putting extra places at Boarshaw, Bowlee and Middleton Parish Primary Schools. The graph shows that from 2013, extra places are likely to be needed in the Middleton Township: 24 in September 2013, 101 in September 2014, 105 in September 2015 and 117 in September 2016. This year a Working Group with representatives from schools, the Authority and Diocese has looked at the need for places and put forward options for consideration, as set out in paragraph 7.

#### 3. Where do you get your information from and how accurate is it?

The Local Authority uses government figures on the actual number of children born in the township, and based on past trends, looks at the proportion of those children who then take up Reception Class places. In some recent years this percentage has been high, so we expect this trend to continue. The projected Reception Class intakes do not take account of the possible effect of any new housing at this stage. The information we have suggests that the biggest increase in births has generally been around the western and northern parts of the Township.

4. What do you take into account to decide where to put extra places?

The Local Authority has to make sure there are enough school places for all children who need them. In deciding the number of extra places needed, it is assumed that all current Reception places will be filled. The Authority has taken into account a number of factors to decide where to put extra places, these are:- distribution of births; physical space in schools; scope to put in extra accommodation; making sure schools can comply with class size limits; and avoiding creating too many extra places. The proposals in the table below show the current thinking to meet the extra need. Alternative proposals and views are invited.

5. How will you put extra space into schools and how will you avoid overcrowding?

The solution is likely to be different for each school. We will look at each school individually - some schools have more space than others and so extra places might be possible by using spare or under-used spaces. In some cases demountable classrooms might be needed. Each year the Authority will need to look closely at the number of applications for places in the Township.

6. How many places are there at each school now?

Planned Admission Number (PAN) capacity for Middleton schools is:

School	PAN	School	PAN	School	PAN	School	PAN
Boarshaw	30	Little Heaton CE VC	30	Alkington	60	St John Fisher RC VA	30
Bowlee Park	90	Middleton Parish CE VA	30	Elm Wood	58	St Mary's RC VA	45
Hollin	30	St Michael's CE VA	30	St Gabriel's CE VC	30	St Peter's RC VA	30
Parkfield	30					St Thomas More RC VA	45

VA-voluntary aided, VC-voluntary controlled, F-foundation, A-Academy

7. Options for where extra places might be provided:

	Sept 2013	Sept 2014	Sept 2015	Sept 2016
Current Reception admission places	568	568	568	568
Expected pupil numbers	592	669	673	685
Extra Places Needed	24 = 1Form Entry	101= 3½ Form Entry	105 =3½ Form Entry	117=4 Form Entry
Where more extra places might be available	Middleton Parish +30	Middleton Parish +30 Boarshaw +15 or +30 Hollin +15 or +30 Parkfield +15 or +30  RC sector to consider need for extra Catholic places	Middleton Parish +30 Boarshaw +15 or +30 Hollin +15 or +30 Parkfield +15 or +30  RC sector to consider need for extra Catholic places	Middleton Parish +30 Boarshaw +15 or +30 Hollin +15 or +30 Parkfield +15 or +30  RC sector to consider need for extra Catholic places

8. Where can I find out more?

This letter concerns Middleton Township. A copy of the full report on Middleton can be found on the council website on the link below. Information on the other townships and the full consultation paper is available on the Rochdale MBC website:

[http://www.rochdale.gov.uk/council\\_and\\_democracy/consultations.aspx](http://www.rochdale.gov.uk/council_and_democracy/consultations.aspx)

You can also get a copy by writing to the address below.

9. Making your views known:

Your views on the following will be helpful,

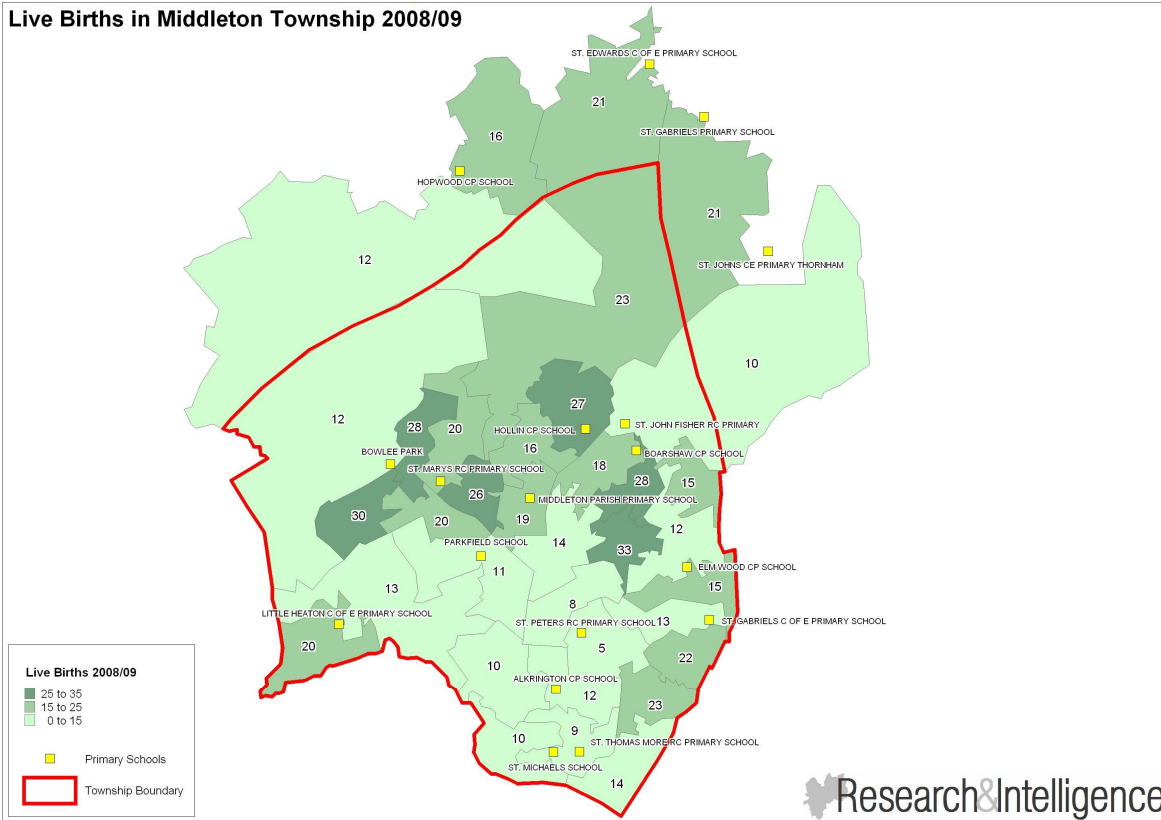
- \* are we proposing enough extra places?
- \* are the places in the right locality to meet need?
- \* would you suggest something different about the need for extra Reception places?

After the closing date a report will go to the Executive Member for Children, Schools & Families before going to Cabinet for a final Decision.

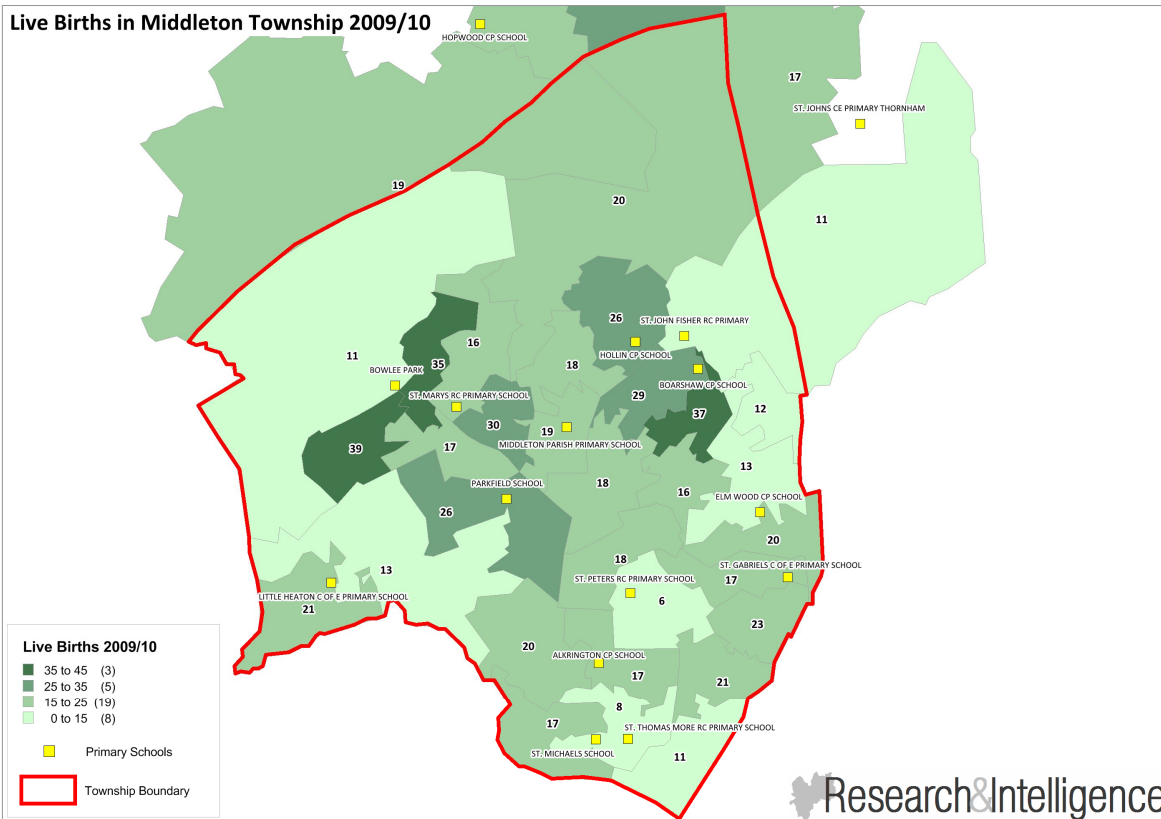
Please send any comments or responses directly to Dawn Jennings at the following address:  
Support for Learning Service, PO Box 70, Municipal Offices, Smith Street, ROCHDALE, OL16 1YD.  
e-mail: [dawn.jennings@rochdale.gov.uk](mailto:dawn.jennings@rochdale.gov.uk) or via the RMBC consultation page (as above),  
by Friday 21<sup>st</sup> December 2012

Maps showing the births within Middleton Township for years 2008 - 2011

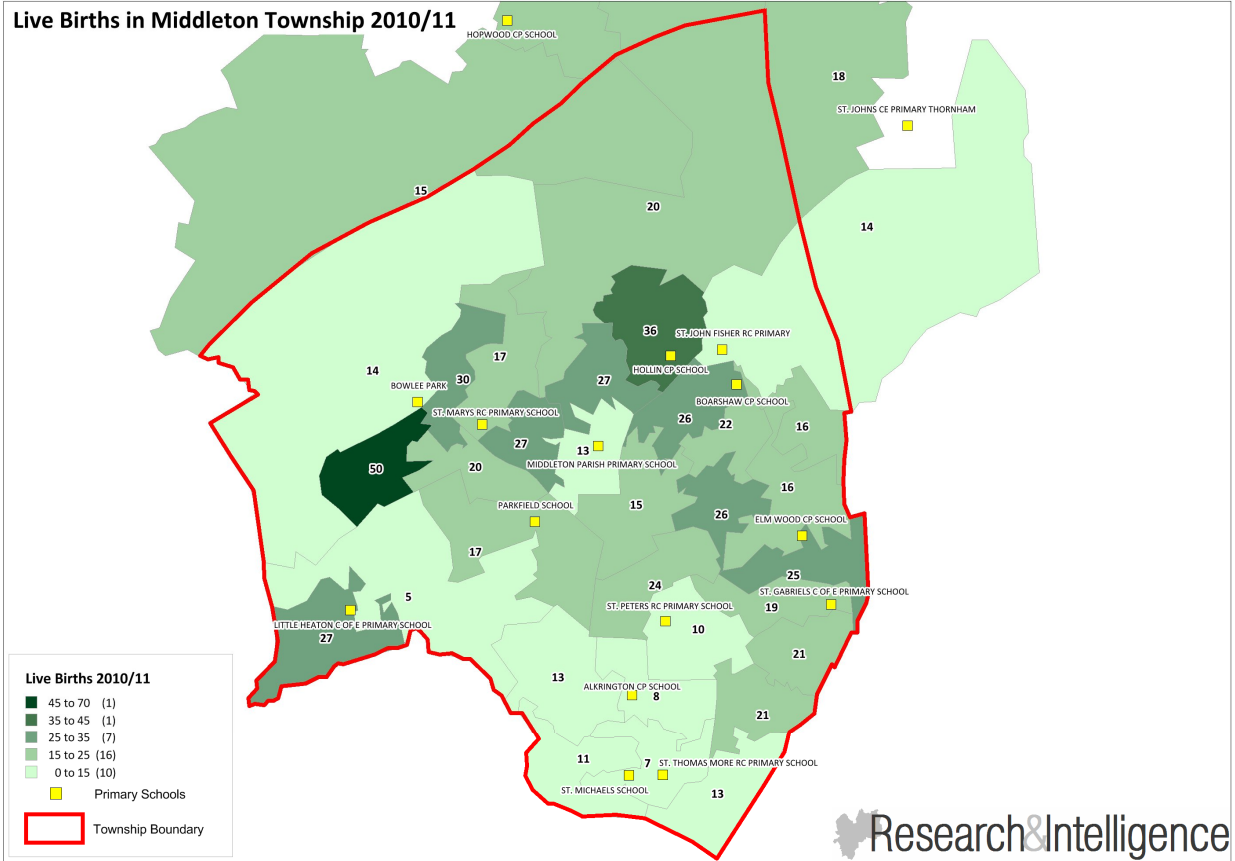
Live Births in Middleton Township 2008/09



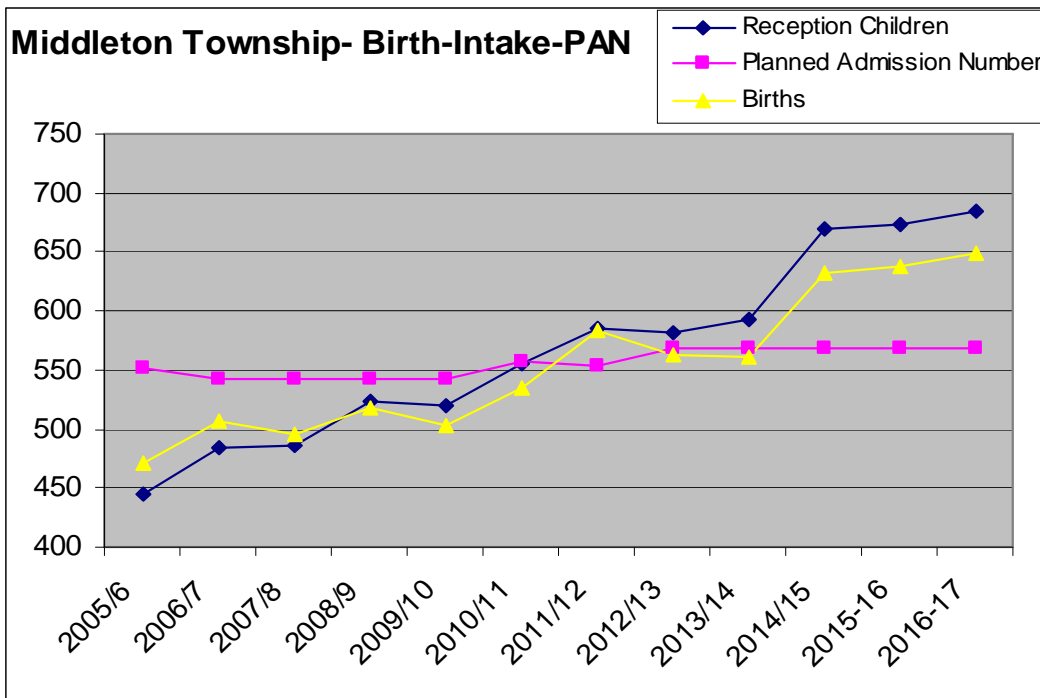
Live Births in Middleton Township 2009/10



**Live Births in Middleton Township 2010/11**



Middleton births to include years 2005 - 2017



PAN - Planned Admission Number

## Middleton admissions, preferences and appeals to September 2012

Sep-12	PAN	Extra	no.of	no.of	%	Places		No.of	No.	No.	Places	
Admissions		R	1st Prefs	1st prefs	1st prefs	at 15April		Appeals	Appeals	Appeals	at 21Sept	
School Name		Places	Rec'd	Offered	Offered	Offered	Vacant		Upheld	pending	Offered	Vacant
Middleton												
Alkrington	60	0	49	46	94%	56	-4				56	-4
Boarshaw	30	30	26	26	100%	34	-26				41	-19
Bowlee Park	90	0	76	69	91%	84	-6				90	0
Elm Wood	58	0	54	52	96%	58	0	2	0		58	0
Hollin	30	0	35	29	83%	30	0	4	0		30	0
Little Heaton	30	0	25	25	100%	30	0				30	0
Middleton Parish	30	0	43	35	81%	30	0	2	0		30	-15
Parkfield	30	0	34	27	79%	30	0	1	0		30	0
St Gabriel's CE	30	0	29	27	93%	30	0				30	0
St John Fisher RC	30	0	28	26	93%	30	0	2	0		30	0
St Mary's RC M'ton	45	0	44	43	98%	45	0				45	0
St Michael's CE A'ton	30	0	30	27	90%	30	0	2	0		30	0
St Peter's RC	30	0	39	28	72%	30	0	3	0		30	0
St Thomas More RC	45	0	45	43	96%	45	0	1	0		45	0
<b>Middleton Total</b>	<b>568</b>	<b>30</b>	<b>557</b>	<b>503</b>	<b>90%</b>	<b>562</b>	<b>-36</b>	<b>7</b>	<b>0</b>	<b>0</b>	<b>575</b>	<b>-38</b>

PAN - Planned Admission Number

15 extra places were created at April 2012