



ROCHDALE
METROPOLITAN BOROUGH
COUNCIL

SCHOOL ORGANISATION PLAN

UPDATE 2010- 2014

JANUARY 2011

Rochdale MBC
Schools Service
PO Box 70
Municipal Offices
Smith Street
Rochdale
OL16 1 YD

ROCHDALE MBC SCHOOL ORGANISATION PLAN UPDATE 2010- 2014

SECTION 1- Introduction and Background

INTRODUCTION

1. The School Organisation Plan (the Plan) sets out how the Local Authority proposes to make sure there are enough primary and secondary school places for children in the borough, including for children with Special Educational Needs. The Local Authority has a legal duty to ensure there are sufficient school places in its area, to promote high educational standards, ensure fair access to educational opportunity and promote the fulfilment of every child's potential. Local Authorities must also ensure there are sufficient schools in their area, promote diversity and increase parental choice. In terms of school places, this involves opening new schools or adding places to existing schools where extra capacity is needed, and reducing places or closing schools where places are not needed. This Plan Update covers the period 2010-2015, and gives conclusions about the need to add or remove places in that period. This Plan Update will focus on the demographic data and the implications of changes to pupil numbers.
2. The Plan will help the Local Authority, schools, parents, promoters and local communities to understand the need for school places. It will provide the basis for considering proposals for changing the organisation of individual schools.

ADMISSIONS AND PARENTAL PREFERENCE

3. Full details of the Admission Arrangements for Primary and Secondary schools are set out in the relevant booklets, published each year. The current booklets and application deadlines can be found on the Rochdale MBC website as follows: http://www.rochdale.gov.uk/education_and_learning/schools_and_colleges/school_admissions/primary_school_admissions.aspx . Admissions arrangements for all maintained schools are subject to the "School Admissions Code" published by the Government, this Code is updated regularly and includes changes in regulation and law that have taken place. A copy of the current Code can be found at: <http://www.dcsf.gov.uk/sacode/downloads/3986-admissions-code-feb10.doc> .
4. The admissions procedures enable parents to express their preferences for a school place for their child. Where there are more applications than there are places, then places are allocated in accordance with the published admission criteria, set out in the Admissions booklet.
5. Parents can make representations about the supply of school places and Local Authorities have a legal duty to respond to these representations. More information on this can be found on the School Organisation Unit website- "Duty to Respond to Parental Representations about the Provision of Schools": <http://www.dcsf.gov.uk/schoolorg/guidance.cfm?id=26> .
6. The diversity in choice of schools will be enhanced through the current government initiative to increase the number of Academies, including in the Primary school sector, (see <http://www.education.gov.uk/academies>) and by proposals for the establishment of new "Free Schools". Further information can be found at <http://education.gov.uk/freeschools> .
7. Where a child is not offered a place at the preferred school, parents have a right to appeal against that decision through an independent appeal panel. There is a "School Admissions Appeals Code" which sets out the Appeals procedures that must be followed: <http://www.dcsf.gov.uk/sacode/downloads/SchoolAdmissionAppealsCodeWEB060309.pdf> .

8. Account is taken of the past pattern of first preferences, balanced by school capacity and class size limits. The Authority is aware of recruitment patterns at popular schools and several schools in the borough are heavily oversubscribed at both primary and secondary level. The Authority recognises the need to give parents greater scope to access places at the schools they want, and that this may have a knock-on effect to other schools. Information is given on pattern of first preferences as each year in the schools admission booklets.

CURRENT PATTERN OF SCHOOL PROVISION

9. The Authority completed and implemented a review of primary school places five years ago substantially reducing surplus capacity and generating resources to build a number of new schools. This review involved the re-organisation of schools such as: school closures; reducing school capacities; establishing Children's Centres; establishing some new, but smaller schools than their predecessors. Such closures and changes in school capacity were aimed at addressing what was at the time a major surplus place issue.
10. In October 2010 there were 4 Nursery schools in the Borough with 231 children (116 fte) and 69 Primary schools with 17,897 children in R - Y6. There are nursery classes at 38 of these primary schools with 1,392 (696 fte) children. The breakdown of schools by category is shown in the following table:

Township	Community	Church of England (Aided)	Church of England (Controlled)	Roman Catholic	Foundation
Heywood	4	2	2	2	0
Middleton	6	2	2	4	0
Pennine	3	3	2	1	3
Rochdale	19	2	3	7	2
Total	32	9	9	14	5

11. Rochdale used the development of proposals for Buildings Schools for the Future as the basis for reviewing secondary school provision, and addressing the increasing number of surplus places in that sector. In October 2010 there are 12 secondary schools in the Borough with 12,070 pupils in Y7-Y11, and further 554 pupils in Y12 and 13 in Sixth forms. The current pattern of schools is as follows:

Community	Foundation (Without a Trust)	Roman Catholic	Roman Catholic/ Church of England	Academy	Trust
5	2	2	1	1	1

12. The Authority has reviewed special school provision and there are 2 primary special schools with 131 primary age children and 2 secondary special schools with 197 children (Y7-Y11) and a further 77 children in Y12-Y14. All 4 schools are collocated with mainstream schools.

SCHOOL CAPACITY DATA

13. The Net Capacity is the physical measure of space in a school, and relates the number, size and use of rooms to pupil places. Surplus places and overcrowding are measured in this way. The underlying aim is to link the physical space available to admission capacity. There is an annual School Capacity Survey, which measures the available places, by sector in each local authority area, the Survey excludes Academies. *Appendix One(A)* sets out school capacity data for May 2010 at school level.

14. The surplus place data for Rochdale Borough for 2010, 2009 and 2008 is as follows:

PRIMARY

Year	Number of Places	Number of Surplus Places	Surplus as % of total	Number of Primary Schools	Number of schools with more than 25% surplus	% of schools with more than 25% surplus	Rural Schools as % of total
2010	19,159	1,292	6	69	3	4	Not available
2009	19,295	1,544	8	69	4	6	1
2008	19,862	2,107	11	70	6	9	1

SECONDARY

Year	Number of Places	Number of Surplus Places	Surplus as % of total	Number of Secondary Schools	Number of schools with more than 25% surplus	% of schools with more than 25% surplus	Rural Schools as % of total
2010	14,461	2,126	14	13	2	15	Not available
2009	14,478	2,058	14	13	3	23	8
2008	14,589	1,898	13	13	2	15	8

(note: this data excludes Academy numbers)

15. For place planning purposes, there is an emphasis on the admission capacity of a school, which is the Planned Admission Number (PAN). At primary school level, the focus is therefore on Reception capacity, and at secondary schools it is the Year 7 capacity. **Appendix One(B)** sets out at Township level the total net capacity set against the actual and projected number of children on roll. This is the government measure to show whether there are enough school places overall. The general position for primary schools across the borough is that the majority of vacancies are found in Key Stage 2.

HOW PUPIL NUMBER PROJECTIONS ARE DEVELOPED

16. **Birth Information and Pupil Numbers on Roll.** The Local Authority uses a standard pupil number projection methodology. It is based on two sets of information: the number of births, by postcode, provided by the Office for National Statistics (ONS); and the actual pupil numbers from the January School Census. Projections are produced globally for the Borough and on a smaller scale for each of the four township areas at Primary level. Individual school projections are not produced.

17. **Housing Development.** The Department for Education "Pupil Projection Guide 2006" addresses the significance of housing developments in pupil number projections. It states "there is a risk of overestimating the impact of new housing on pupil rolls". The good practice guidance suggests that the following points should be considered: firstly that developments may not always attract new residents with school-age children; secondly that any inward migration may already be reflected in the historical take-up of places which is already included in projections; and thirdly that developments may not actually increase the number of children attending schools in the Authority, but it may affect pupil rolls at particular schools. For these reasons the base projection model does not include any separate section for extra children from new housing.

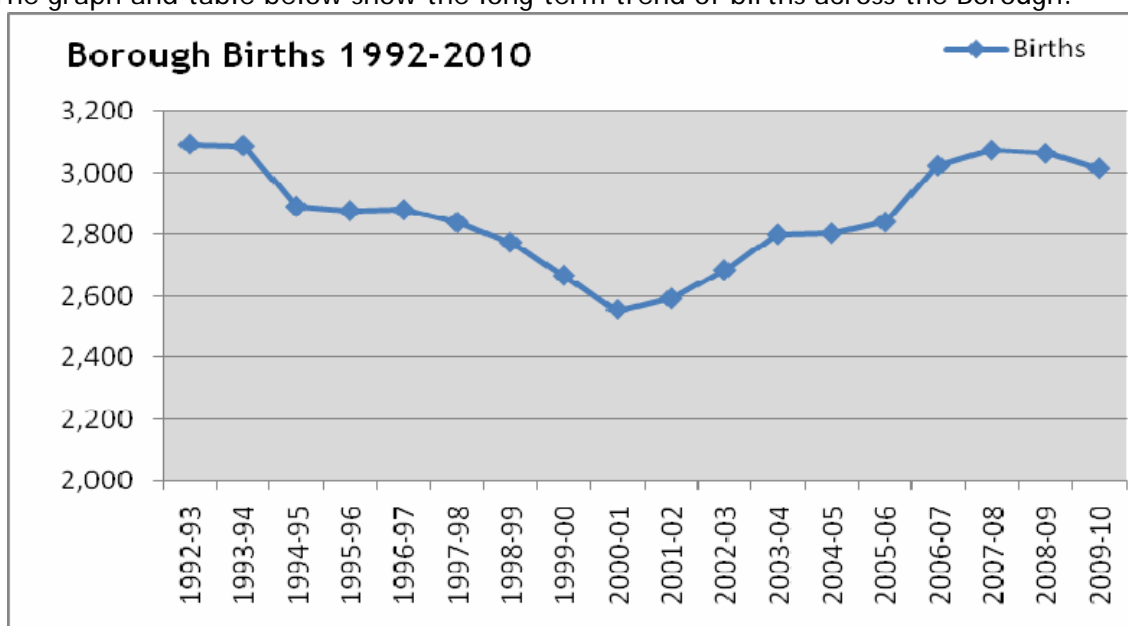
18. However, the development of Housing Market Renewal (HMR) projects in the Borough is potentially a significant factor in changing the pupil population. Also at a local level the effect of additional planned new housing can be taken into account when developing proposals for additional school places. In future this will include seeking developer contributions to meeting the cost of new school places.

THE NUMBER OF CHILDREN BORN IN THE BOROUGH

19. Births in the Borough reflect the national picture, and the trend has been a fall in births from about 3100 in 1992/3 to about 2500 in 2000/1. The number of children born has increased since then, seeming to level out in 2003/4 and 2004/5 for admission to school in 2008/9 and 2009/10. However in 2006/7 (after the second stage of the Primary Review) births increased significantly and peaked in 2007-08. Births in 2008-09 show a reduction on the two previous years.

20. Maps are attached at *Appendix Two* for each township to show the distribution of births. These maps are produced for each of the last 3 years for which we have post-code data. They show at a locality level¹ how many children were born there. The maps for each of the three years can be compared to give an indication of which localities have the greatest number of children, and can help indicate where the greatest need for places might be in a township. For children born in the last two years this level of information is not available, so the Ward level information is given.

21. The graph and table below show the long term trend of births across the Borough:



Births 1992-2010

Year	1992-93	1993-94	1994-95	1995-96	1996-97	1997-98	1998-99	1999-00	2000-01	2001-02	2002-03	2003-04	2004-05	2005-06	2006-07	2007-08	2008-09	2009-10
Births	3,093	3,088	2,890	2,876	2,879	2,839	2,773	2,665	2,554	2,591	2,683	2,799	2,803	2,840	3,023	3,074	3,064	3,015

PROPORTION OF CHILDREN BORN WHO TAKE UP RECEPTION PLACES

22. An important part of projecting pupil numbers for reception intakes is to look at the proportion of children born in the Borough who actually take up Reception Class places. This is known as the "Progression Ratio". Consistently over the past 12 years the Progression Ratio from birth to Reception across the Borough as a whole has been about 95%. Based on the October 2010 Census, 96.2% of children born have progressed to Reception class, the fourth year the figure has risen. For the purpose of this paper the progression ratios for the last three years have been used, weighted in favour of the most recent year's figures (8:1:1), to project the intake demand for future years. *For Reception intake in September 2011, to take account of this trend a 97% progression ratio has been applied.*

¹ Lower Level Super Output Area

PROPORTION OF CHILDREN WHO TAKE UP YEAR 7 PLACES

23. In the last 4 years the progression from Y6 to Y7 has averaged 92.3% of the cohort, which suggests the borough loses about 200 pupils per year group to other local authority areas. Notwithstanding the addition of Church of England places in Heywood and Middleton, the overall secondary intake has fallen again this year. *Appendix Three* sets out the pattern of cross-border movement.

HOUSING DEVELOPMENTS

24. Across the borough in 2008-09, 500 new properties were completed, and 118 were demolished, which gives a net growth in the number of houses of 382. Any children of school age in those houses will be included in the pupil number projections. The draft Strategic Housing Land Availability Assessment for 2009 examines need for new homes in the Borough and where they can be located. The report concludes that in the period 2010-2026 an extra 8,946 homes will be needed. The implications of the distribution of these homes will need to be considered in future school place planning, along with an appreciation of the mix of property types. *Appendix Four* summarises the new housing developments by township over the next 15 years.
25. The new School Capacity Collection 2010 requires projected pupil numbers to include allowance for new housing developments. Information to be used on new housing developments (from the Borough's Planning Department) gives details of the location of planning permissions for new housing and the number of properties, together with the number of properties under construction as at April 2010. For the purposes of this exercise only new houses on sites that are under construction can be included in the calculations. In common with most northern local authorities an overall average of 3 pupils per year group for each 100 houses (pupil yield) is used. This means that for every new 100 houses there will be a need for an extra 21 primary age pupils and 15 secondary age pupils.
26. The following table sets out the total additional place demand by township based on April 2010 sites under construction:

Township	Number of houses on sites under construction*	Number of Extra Primary Places per year Group (Total R-Y6)	Number of Extra Secondary Places per year Group (Total Y7-Y11)
Heywood	466	14 (total = 98)	14 (total = 70)
Middleton	519	27 (total = 109)	27 (total = 78)
Pennine	176	4 (total = 37)	4 (total = 27)
Rochdale	162	3 (total = 34)	3 (total = 25)

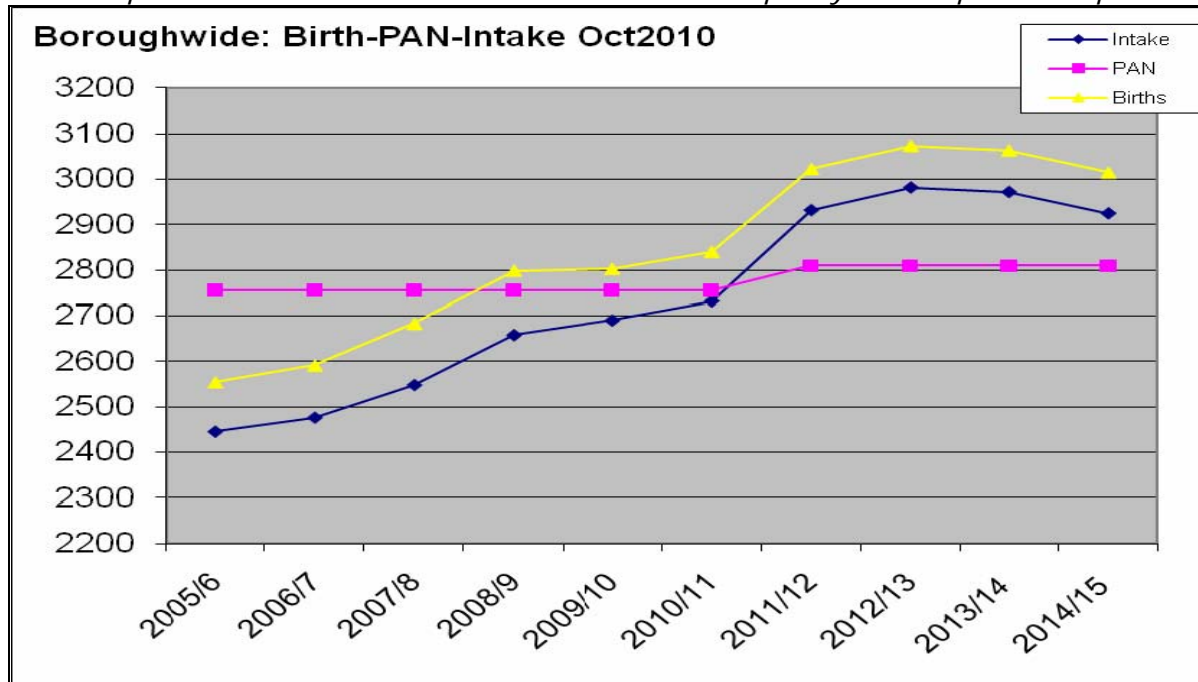
* = houses under construction and houses not started on sites under construction are counted here
Also- places per year group rounded up to next whole number

27. The distribution of new housing suggests that for the most part the effect of these extra houses would be widely spread within each township. However, the west and north of Middleton Township has a significant number of new houses, which would suggest a need for more primary school places in that locality up to 1 form of entry, especially when coupled with the birth data. The distribution of new housing in Heywood township suggests that the area west of the town centre, by about a quarter of a form of entry. (1 Form of entry = 30 pupils).

SECTION 2: PRIMARY SECTOR PLACE DEMAND

BOROUGH LEVEL

28. Graph and Table to show Birth-Intake-Admission Capacity from Sept 2005-Sept 2014:



	2005/6	2006/7	2007/8	2008/9	2009/10	2010/11	2011/12	2012/13	2013/14	2014/15
Intake	2445	2476	2548	2658	2690	2732	2932	2982	2972	2925
PAN	2756	2756	2756	2756	2756	2756	2809	2809	2809	2809
Births	2554	2591	2683	2799	2803	2840	3023	3074	3064	3015

29. The total Reception Class capacity across the Borough for September 2011 is 2,809 places². On the basis of the methodology described in Section 2 above, in September 2011 we expect 2,932 children to want Reception Class places, so at least 123 extra places are needed overall. In September 2012 the number of children wanting places is expected to peak at 2,982, reducing in September 2013 to 2,972, with a further fall to 2,925 in September 2014. This means that extra Reception Places will be needed in each of the years from September 2011 to 2014. Further, this presumes all available admission places are filled.

30. Section 4 below will set out the current proposals for meeting the additional demand, at school level within each township.

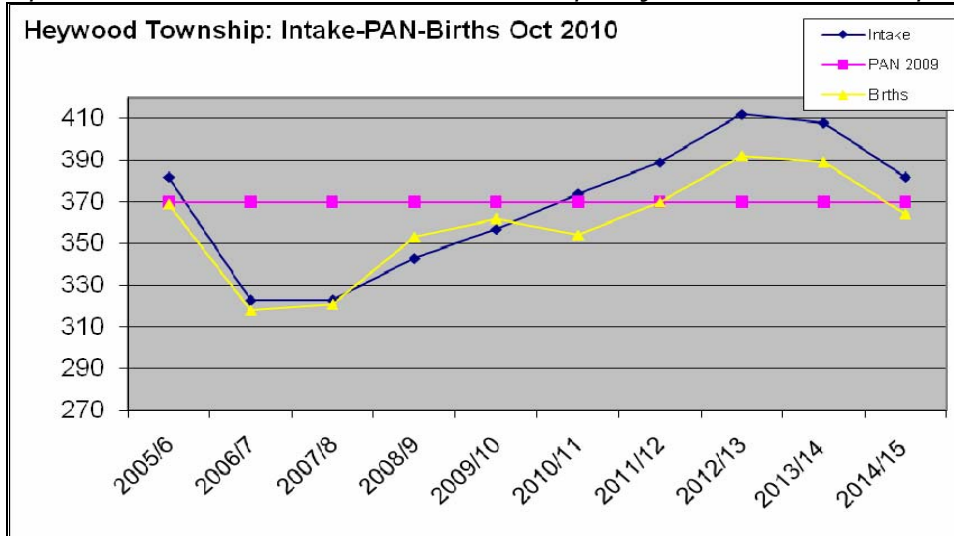
31. The following table compares the Reception intake projection for September 2010, compared to the projection with housing, the place offers made, and actual intake.

	Projection NO Housing	Projection WITH Housing	Reception Place Offers	Actual Oct 2010
Boroughwide	2714	2747	2770	2732
Heywood	350	361	383	374
Middleton	545	558	548	540
Pennine	376	382	368	366
Rochdale	1445	1449	1471	1452

² Primary School Admissions Booklet 20011-12 school year- total of the PAN for each primary school.

HEYWOOD TOWNSHIP

32. Graph and Table to show Birth- admission capacity and intake from Sept 2005 to 2014:

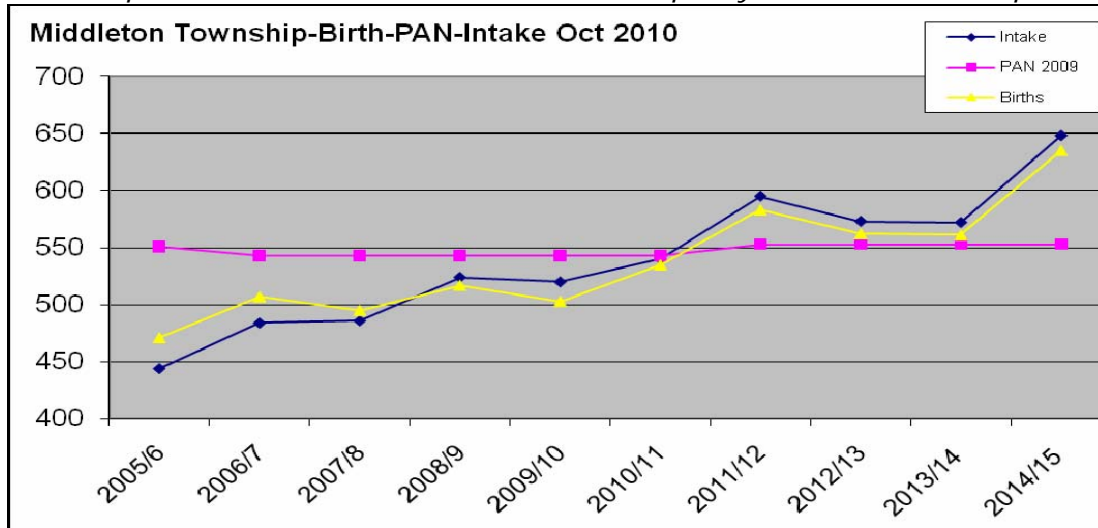


	2005/6	2006/7	2007/8	2008/9	2009/10	2010/11	2011/12	2012/13	2013/14	2014/15
Intake	382	323	323	343	357	374	389	412	408	382
PAN 2009	370	370	370	370	370	370	370	370	370	370
Births	369	318	321	353	362	354	370	392	389	364

33. On the basis of current projections an extra 19 reception class places will be needed for September 2011. It is expected that in September 2012, 42 additional places will be needed. In September 2013 38 extra places will be needed, and in September 2014 an extra 12 places will be needed.

MIDDLETON TOWNSHIP

34. Graph and Table to show Birth- admission capacity and intake from Sept 2005 to 2014:

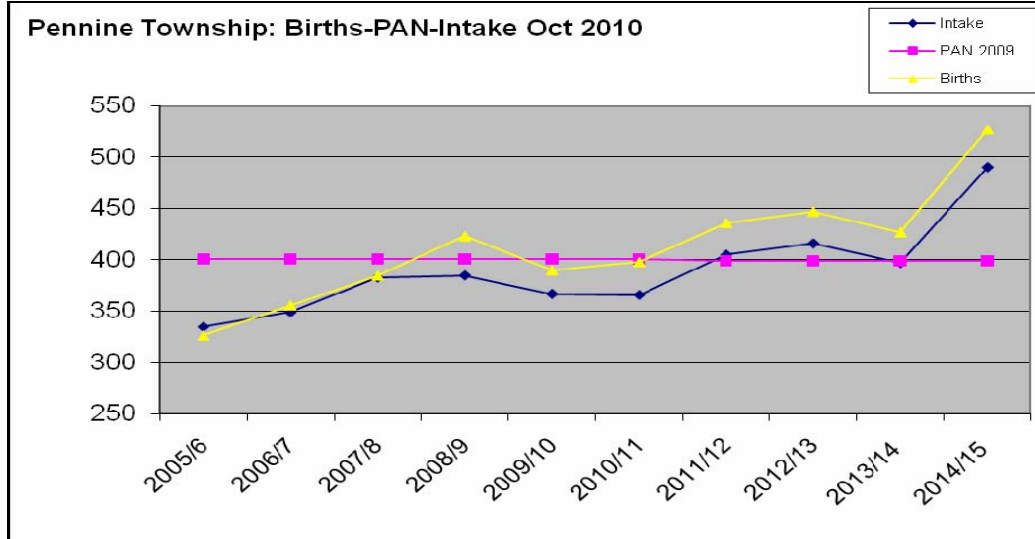


	2005/6	2006/7	2007/8	2008/9	2009/10	2010/11	2011/12	2012/13	2013/14	2014/15
Intake	444	484	486	524	520	540	595	573	572	648
PAN 2009	551	543	543	543	543	543	553	553	553	553
Births	471	507	495	517	503	535	583	562	561	635

35. The Birth-Reception progression ratio in Middleton has been variable, although the previous four years saw a consistent increase in that ratio this has fallen in the last year. On the basis of projection an extra 42 Reception Places 42 places will be needed this September. In each of September 2012 and 2013 an extra 20 places will be needed. Of great significance is the major increase in births in the township for September 2014 admission- an extra 95 places will be needed.

PENNINES TOWNSHIP

36. Graph and Table to show Birth- admission capacity and intake from Sept 2005 to 2014:

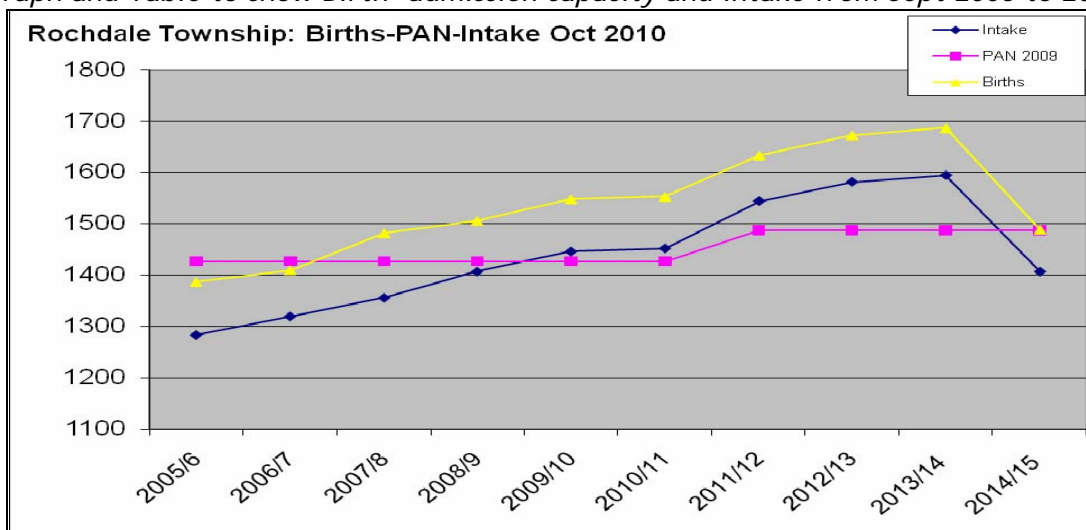


	2005/6	2006/7	2007/8	2008/9	2009/10	2010/11	2011/12	2012/13	2013/14	2014/15
Intake	335	349	383	385	367	366	405	416	397	490
PAN 2009	401	401	401	401	401	401	399	399	399	399
Births	327	356	385	423	390	398	436	447	427	527

37. There has been a consistent reduction in the progression ratio over the past 12 years, at one point the Township taking as many as 12% more children than were born there, but the trend has been downwards, so that admissions were 9% below births 2008-09. However, at present the ratio is about 92%. Births have increased, with a significant increase for 2014 admissions. For September 2011 there are 405 projected pupils, so 6 extra places would be needed. In September 2012 an extra 17 places would be needed, and in September 2013 there would be just enough places. However, in September 2014 an extra 91 places will be needed.

ROCHDALE TOWNSHIP

38. Graph and Table to show Birth- admission capacity and intake from Sept 2005 to 2014:



Rochdale	2005/6	2006/7	2007/8	2008/9	2009/10	2010/11	2011/12	2012/13	2013/14	2014/15
Intake	1284	1320	1356	1407	1446	1452	1544	1581	1594	1407
PAN 2009	1427	1427	1427	1427	1427	1427	1487	1487	1487	1487
Births	1387	1410	1482	1506	1548	1553	1634	1673	1687	1489

39. Historically there has been a consistent difference of as much as 11% between births and admissions, but the recent trend is closer to about 6% fewer children than were born taking up Reception Class places in the township. On the basis of available information there is expected to be a need for 57 extra places in September 2011, in spite of increasing PANs at three schools. In September 2012 94 extra places will be needed, and in September 2013 an extra 107 places will be needed. In September 2014 however, there would 80 spare places.

SCHOOL NUMBERS and CAPACITY by YEAR GROUP

40. As shown in the table below, overall, there are currently sufficient school places in the primary sectors across the Borough in all year groups. The highest incidence of surplus capacity is mostly across Key Stage 2.

Primary Number On Roll By Township and Year Group October 2010															
Township	R		Y1		Y2		Y3		Y4		Y5		Y6		Total
	PAN	Oct	PAN	Oct	PAN	Oct	PAN	Oct	PAN	Oct	PAN	Oct	PAN	Oct	Oct
Heywood	370	374	370	360	385	323	390	313	390	314	419	372	419	356	2433
Middleton	543	540	543	525	543	478	543	482	551	482	566	446	597	470	3468
Pennine	401	366	410	369	436	393	445	382	445	345	444	333	456	363	2551
Rochdale	1442	1452	1437	1427	1441	1376	1450	1322	1489	1294	1489	1295	1436	1279	9445
TOTAL	2756	2732	2760	2681	2805	2636	2828	2499	2875	2435	2918	2446	2908	2468	17897

41. In the primary sector, the current spare capacity across Reception groups is less than 0.9%. This gives almost no flexibility for pupil movement and parental preference. There are variations both at township level, and within township areas. *Appendix Five* gives the position for individual primary schools, by township. As larger Reception intake cohorts move into the system, over the next few years this position will become more of an issue to address, within the constraints of both physical space in schools and compliance with class size limits.

PRIMARY SCHOOLS IN YEAR MOVEMENT

42. The tables below show the in-year change in pupil numbers in school year 2009-10. In the past the general pattern has been that there are fewer children on roll at the end of the year than started in September. School year 2009-10 shows a different position, particularly for Reception numbers in Rochdale Township which show an increase from September by almost a form of entry.

Primary Pupil Numbers- October 2009 and January 2010 School Census R-Y6

Township	R			Y1			Y2			Y3			Y4			Y5			Y6		
	Oct	Jan	Diff	Oct	Jan	Diff	Oct	Jan	Diff	Oct	Jan	Diff	Oct	Jan	Diff	Oct	Jan	Diff	Oct	Jan	Diff
Heywood	361	357	-4	348	349	1	313	311	-2	328	325	-3	378	374	-4	363	361	-2	379	375	-4
Middleton	521	520	-1	524	524	0	480	478	-2	481	483	2	441	447	6	473	473	0	530	528	-2
Pennine	370	367	-3	392	393	1	375	379	4	348	346	-2	335	338	3	360	360	0	372	375	3
Rochdale	1421	1446	25	1400	1399	-1	1344	1344	0	1318	1321	3	1298	1307	9	1285	1280	-5	1296	1307	11
TOTAL	2673	2690	17	2664	2665	1	2512	2512	0	2475	2475	0	2452	2466	14	2481	2474	-7	2577	2585	8

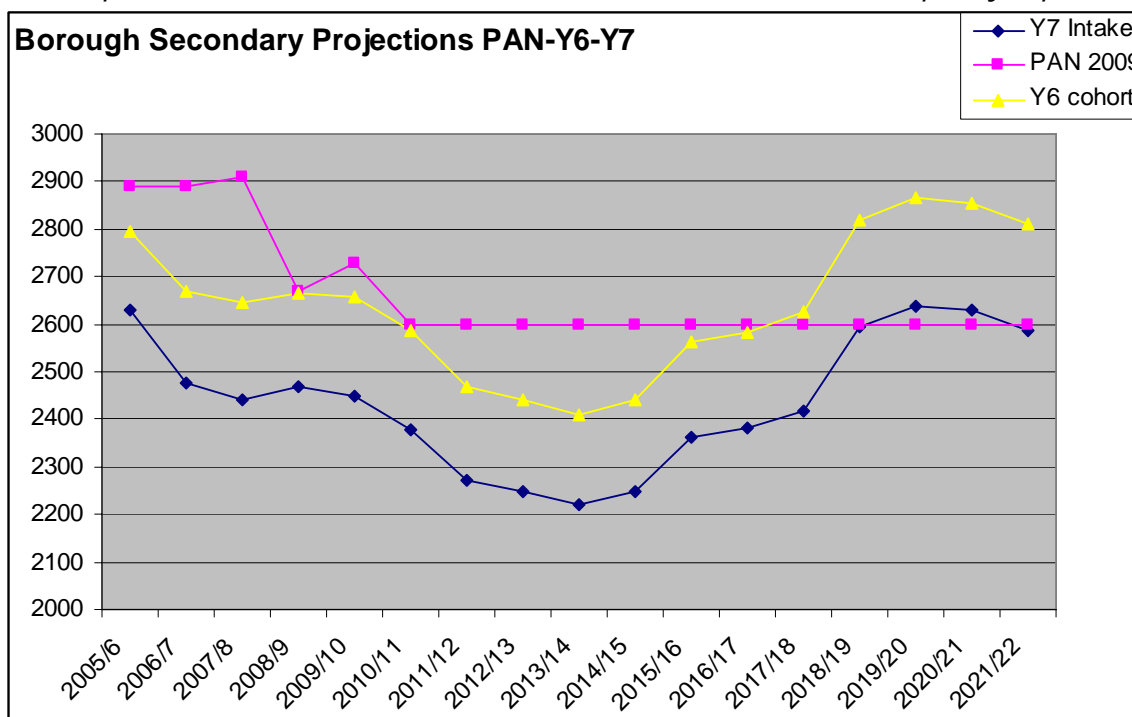
Primary Pupil Numbers- October 2009 and January 2010 - Total by Township

Township	TOTAL		
	Oct	Jan	Diff
Heywood	2470	2452	-18
Middleton	3450	3453	3
Pennine	2552	2558	6
Rochdale	9362	9395	33
TOTAL	17834	17858	24

SECTION 3: SECONDARY SECTOR PLACE DEMAND

BOROUGH LEVEL

43. Graph and Table to show Year 6 cohort - Y7 Intake - admission capacity Sept 2005 to 2020:



	2005/6	2006/7	2007/8	2008/9	2009/10	2010/11	2011/12	2012/13	2013/14	2014/15	2015/16	2016/17	2017/18	2018/19	2019/20	2020/21	2021/22
Y7 Intake	2628	2476	2441	2470	2450	2378	2273	2247	2219	2247	2361	2380	2417	2594	2638	2629	2587
PAN 2009	2888	2888	2908	2668	2728	2600	2600	2600	2600	2600	2600	2600	2600	2600	2600	2600	2600
Y6 cohort	2795	2670	2647	2665	2658	2585	2468	2440	2410	2440	2564	2584	2625	2817	2865	2855	2810

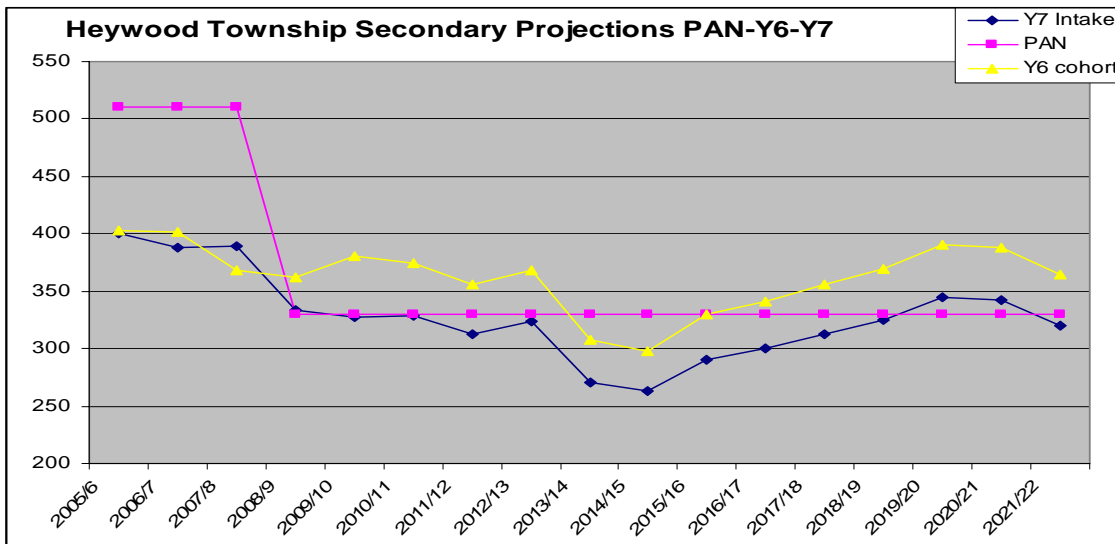
44. The current total Year 7 class capacity across the borough is 2,600 places. On the basis of the methodology described in Section 1, in September 2011 we expect 2,273 children to want Year 7 places, so there are enough places overall. Secondary intakes are expected to fall for the following two years- to 2219 in September 2013, and after that they will begin to rise to a peak of 2638 in 2019. These projections do not include any potential demand from new housing developments.

45. On the basis of current projections there are sufficient Year 7 places across the borough within the period of this Plan. Action to increase admission capacity based on demographic trends will be needed for September 2018 at the latest.

46. The Authority plans secondary provision at Borough Level. This means that decisions on the need to add or remove places are based on the overall supply and demand, and not at township level. However, the Authority is mindful of the need for sufficient places to be within a reasonable travelling distance. The following sections describe the position at township level, to understand the slightly differing trends in each area.

HEYWOOD TOWNSHIP

47. Graph and Table to show Year 6 cohort - Y7 Intake - admission capacity Sept 2005 to 2020:

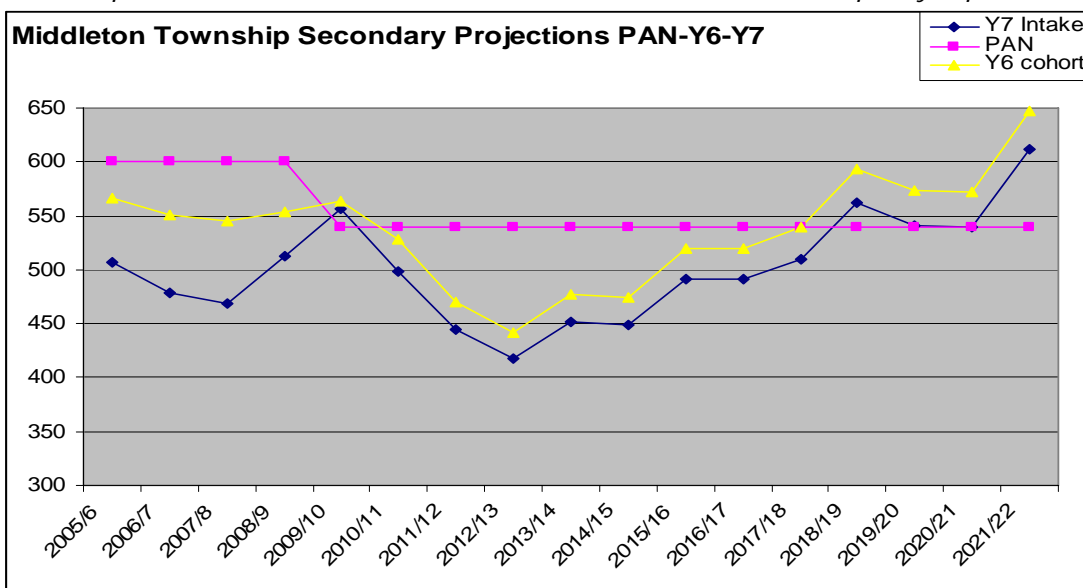


	2005/6	2006/7	2007/8	2008/9	2009/10	2010/11	2011/12	2012/13	2013/14	2014/15	2015/16	2016/17	2017/18	2018/19	2019/20	2020/21	2021/22
Y7 Intake	400	388	389	334	328	329	313	324	271	263	290	300	313	325	345	342	320
PAN	510	510	510	330	330	330	330	330	330	330	330	330	330	330	330	330	330
Y6 cohort	403	401	368	362	380	375	356	368	308	298	330	341	356	370	391	388	364

48. The current Year 7 class capacity across Heywood Township is 330 places. The projections are based on demographic trends only. The projected Year7 intake for September 2011 is 313, so there will be enough places. Demand in the next two years is expected to be high, but intakes are expected to fall in 2013 and 2014. It is expected that demand will then rise to a peak of 345 in 2019. At that point there would not be enough places within the township, although there would be sufficient places overall when capacity in Middleton is taken into account.

MIDDLETON TOWNSHIP

49. Graph and Table to show Year 6 cohort - Y7 Intake - admission capacity Sept 2005 to 2020:

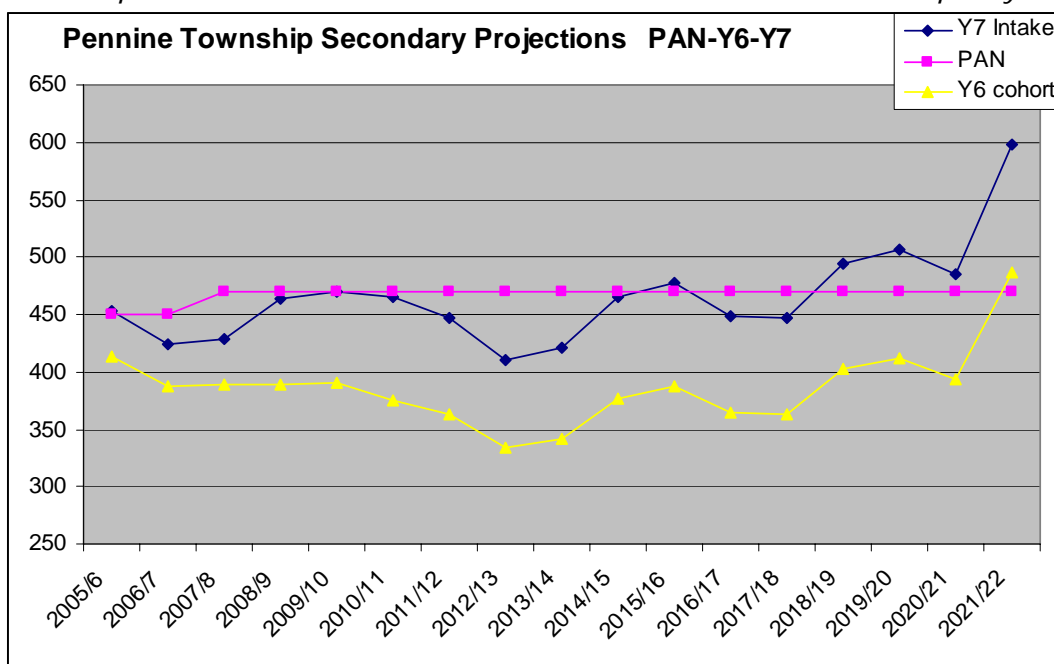


	2005/6	2006/7	2007/8	2008/9	2009/10	2010/11	2011/12	2012/13	2013/14	2014/15	2015/16	2016/17	2017/18	2018/19	2019/20	2020/21	2021/22
Y7 Intake	507	479	468	512	556	498	444	418	451	449	491	492	510	562	541	540	612
PAN	600	600	600	600	540	540	540	540	540	540	540	540	540	540	540	540	540
Y6 cohort	567	551	545	554	564	528	470	442	477	475	519	520	539	594	573	572	647

50. The current Year 7 class capacity across Middleton Township is 540 places, including St. Anne's Academy. The projections are based on demographic trends only. The projected Year7 intake for September 2011 is 444, so there will be enough places, including any additional demand from Heywood Township. Demand is expected to fall in September 2012, but then it is expected to rise to 562 in 2018. However, when taken together with Heywood Township there would be enough places overall.

PENNINE TOWNSHIP

51. Graph and Table to show Year 6 cohort - Y7 Intake - admission capacity Sept 2005 to 2020:

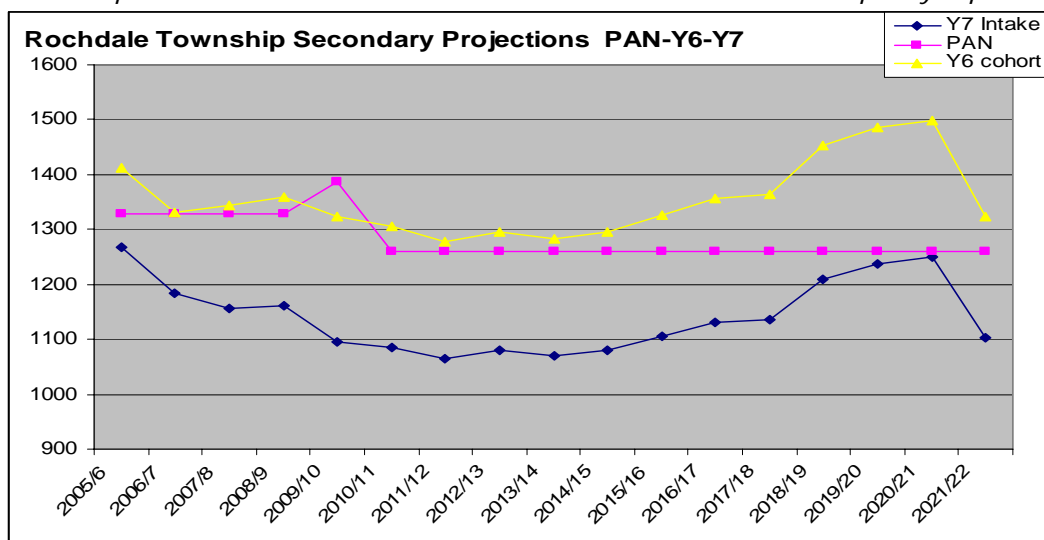


	2005/6	2006/7	2007/8	2008/9	2009/10	2010/11	2011/12	2012/13	2013/14	2014/15	2015/16	2016/17	2017/18	2018/19	2019/20	2020/21	2021/22
Y7 Intake	453	424	428	463	470	465	447	411	421	465	478	448	447	495	507	485	598
PAN	450	450	470	470	470	470	470	470	470	470	470	470	470	470	470	470	470
Y6 cohort	413	388	389	389	391	375	363	334	342	377	388	364	363	402	412	394	486

52. The current Year 7 class capacity across Pennine Township is 470 places. The projections are based on demographic trends only. The projected Year 7 intake for September 2011 is 447, so there will be enough places overall. Demand is expected to fall in September 2012, but then it is expected to rise to 478 places in 2015, after which there is a fall, but then the demand increases to a further peak of 507 in 2019, and again to 598 places in 2021. However, when taken together with Rochdale Township there would not be enough places in 2015. In 2020 and 2021 there would be just enough places across both townships.

ROCHDALE TOWNSHIP

53. Graph and Table to show Year 6 cohort - Y7 Intake - admission capacity Sept 2005 to 2020:



	2005/6	2006/7	2007/8	2008/9	2009/10	2010/11	2011/12	2012/13	2013/14	2014/15	2015/16	2016/17	2017/18	2018/19	2019/20	2020/21	2021/22
Y7 Intake	1268	1185	1156	1161	1096	1086	1065	1079	1069	1079	1105	1131	1137	1209	1238	1249	1102
PAN	1328	1328	1328	1328	1388	1260	1260	1260	1260	1260	1260	1260	1260	1260	1260	1260	1260
Y6 cohort	1412	1330	1345	1360	1323	1307	1279	1295	1283	1296	1326	1357	1365	1452	1487	1499	1323

54. The current Year 7 class capacity across Rochdale Township is 1260 places. The projections are based on demographic trends only. The projected Year 7 intake for September 2011 is 1065, so there will be enough places overall. Demand is expected to rise steadily up to 2021, and then to fall. Throughout this period there are expected to be enough places overall. The place capacity in the township will be able to accommodate some of the growth in the adjacent Pennine Township.

SCHOOL NUMBERS and CAPACITY by YEAR GROUP

55. As shown in the table below, overall, there are currently sufficient school places in the secondary sector in the Borough in all year groups. *Appendix Six* gives the position at each secondary school.

Y7		Y8		Y9		Y10		Y11		Total
PAN	Oct	PAN	Oct	PAN	Oct	PAN	Oct	PAN	Oct	Oct
2728	2378	2668	2417	2908	2432	2888	2413	2888	2430	12070

PAN = Planned Admission Number

SECONDARY SCHOOLS IN YEAR MOVEMENT

56. At secondary level the overall position is that in total number terms there were fewer pupils at the end of the year. Two year groups (y8 & y9) showed a small increase in number.

Township	Y7			Y8			Y9			Y10			Y11			Total 11-16		
	Oct	Jan	diff	Oct	Jan	diff	Oct	Jan	diff	Oct	Jan	diff	Oct	Jan	diff	Oct	Jan	diff
Heywood	328	328	0	328	325	-3	363	367	4	380	375	-5	402	400	-2	1801	1795	-6
Middleton	553	556	3	511	512	1	476	478	2	486	476	-10	485	479	-6	2511	2501	-10
Pennine	473	470	-3	464	469	5	424	425	1	409	411	2	433	426	-7	2203	2201	-2
Rochdale	1097	1096	-1	1155	1160	-5	1158	1160	-2	1191	1188	3	1230	1231	-1	5831	5835	4
Boroughwide	2451	2450	-1	2458	2466	8	2421	2430	9	2466	2450	-16	2550	2536	-14	12346	12332	-14

SECTION 4: COMMENTARY ON THE NEED FOR ADDITIONAL PLACES

Commentary on need for Additional Primary Places

57. Demand for Reception Class Places at Borough level:

School Year	Sept 2011	Sept 2012	Sept 2013	Sept 2014
Current Admission Capacity	2809*	2809**	2809*	2809*
Expected Pupil Numbers	2932	2982	2972	2925
Additional places needed	123 (about 4 extra forms of entry)	173 (about 6 extra forms of entry)	163 (about 5½ extra forms of entry)	116 (about 4 extra forms of entry)

* = Published Admission Numbers (PAN) set out in the 2011-12 Admissions Booklet

** = Assuming the same higher PAN is set for each of Heybrook, Lowerplace and Bowlee Park

58. The following paragraphs set out the need for additional Reception Places at Township level, together with the current proposals for meeting that need. It should be noted that:

- the projections do not include any additional place need arising from the effect of new housing developments,
- it is assumed that all existing Reception places will be filled
- wherever possible, to help compliance with class size legislation, additional places should be proposed on the basis of a whole form of entry (30 places), or in some cases a half form of entry (15 places)

59. Demand for Reception Class Places in Heywood Township:

School Year	Sept 2011	Sept 2012	Sept 2013	Sept 2014
Current Admission Capacity	370	370	370	370
Expected Pupil Numbers	389	412	408	382
Additional places needed	19	42	38	12
PROPOSALS TO MEET EXTRA DEMAND	Admit extra pupils at Woodland- plan for 20, but up to 30	Increase PAN by 30 at Woodland (total PAN=90), further extra places at Harwood Park if needed (max 15).	Woodland 30 extra places.	To be considered taking account of latest trends and demand.

60. Demand for Reception Class Places in Middleton Township:

School Year	Sept 2011	Sept 2012	Sept 2013	Sept 2014
Current Admission Capacity	553*	553	553	553
Expected Pupil Numbers	595	573	572	648
Additional places needed	42	20	19	95
PROPOSALS TO MEET EXTRA DEMAND	PAN for Bowlee Park is 75, but it is intended that the school will admit up to 90 pupils. A further 30 places will be planned for Hollin for this year only.	Consider PAN of 90 for Bowlee Park. Consider need for any further places at Boarshaw.	Consider PAN of 90 for Bowlee Park.	Consider PAN of 90 for Bowlee Park. Consider 30 additional places at Alkington CP. A further 30 places are likely to be needed in the Township.

61. Demand for Reception Class Places in Rochdale Township:

School Year	Sept 2011	Sept 2012	Sept 2013	Sept 2014
Current Admission Capacity	1487*	1487	1487	1487
Expected Pupil Numbers	1544	1581	1594	1407
Additional places needed	57	94	107	0
PROPOSALS TO MEET EXTRA DEMAND	In addition to places planned at Heybrook and Lowerplace, extra pupils are planned to be allocated as follows: Deeplish-5 (=50) Hamer- 7 (= 45) Belfield-5 (= 45) Greenbank 30 (=90) Support St.John's RC to admit up to 15 more (=45)	In addition to places planned at Heybrook and Lowerplace, extra pupils are planned to be allocated as follows: Deeplish-15 (PAN 60) Hamer- 7 (PAN 45) Belfield-5 (PAN 45) Sandbrook- 30 (PAN90) Greenbank- 30 (PAN90). St.John's RC-15 (=45) A further 7 extra places need to be identified.	In addition to places planned at Heybrook and Lowerplace, extra pupils are planned to be allocated as follows: Deeplish-15 (PAN 60) Hamer- 7 (PAN 45) Belfield-5 (PAN 45). Greenbank 30 (PAN90) St.John's RC-15 (=45) Further Places: In the light of further information on demand and pupil distribution an extra 30 places at each of: Meanwood Shawclough Sandbrook	Consider whether extra places need to be continued. Consider if extra places needed because of high numbers in Pennine Township.

62. Demand for Reception Class Places in Pennine Township:

School Year	Sept 2011	Sept 2012	Sept 2013	Sept 2014
Current Admission Capacity	399*	399	399	399
Expected Pupil Numbers	405	416	397	490
Additional places needed**	6	17	0	91
PROPOSALS TO MEET EXTRA DEMAND	Consider up to 4 extra places at Holy Trinity CE	Consider increase of up to 15 places at Littleborough, and up to 8 extra places at Holy Trinity CE	At present it is not certain whether extra places are needed for this year.	An extra form of entry at Littleborough CP to be considered. Two extra classes also need to be planned for the township, taking account of Rochdale Township demand.

Commentary on need for Additional Secondary Places 2010 to 2015

63. Overall there are sufficient secondary admission places within the Plan period. However, if current trends continue, there could be local pressure in Pennine Township in 2015, although those additional pupils can be accommodated within overall secondary capacity.

SECTION 5: CONSULTATION ARRANGEMENTS

CONSULTATION

64. In January 2010 Cabinet agreed to set up a Stakeholder Group comprising representatives of primary and secondary governors and headteachers, staff associations, elected councillors and diocesan authorities to look at updating the School Organisation Plan. The Group was asked to look at the supply and demand issues for school places and to consult on the Plan and issues raised, with a view to reporting back to Cabinet.

65. This document was circulated to parents headteachers and governing bodies, diocesan authorities, elected members, secretaries of recognised trades unions, Young People’s Learning Agency, inviting comments by *14th January 2011*. The outcomes of that consultation were included in the report to cabinet on 31st January 2011.

66. The key issue identified in the Plan is the need for extra Reception Class places over the next four years. To get the widest possible input, Consultation letters were sent to primary and nursery school parents, staff and governors, as well as the groups identified above.

SECTION 6: IMPLEMENTATION OF CHANGES TO SCHOOL CAPACITY

67. *Personnel Implications:* In considering any proposals to increase admission numbers at schools, it is important that the personnel and financial implications are taken into account in ensuring that the school can be staffed and organised to meet the increased need. Where a school needs to appoint an additional teacher to comply with class size limits or to establish an additional teaching group, it is the responsibility of the school to select and appoint such staff from within the school’s budget.

68. **Financial Implications:** At any school where an increase in admissions is proposed and agreed, for either September 2011 or September 2012 onwards, there are likely to be capital costs associated with bringing space into use for class teaching purposes, or for the provision of temporary accommodation. These costs will need to be met from the overall primary schools capital programme. Government decisions on schools capital spending priorities will not be known until January 2011.
69. Through their revenue budgets, schools receive funding which enables them to comply with Infant Class Size Regulations. School budgets are for financial years based on pupil numbers as per the January census data. For September 2011, if additional places become planned for any school, under Regulations the Local Authority is able to fund the estimated increase in places if this is significant, so the school will receive extra funding for the planned places. For September 2012 any planned increase in numbers will allow schools to budget for additional staff. However, if fewer children than expected are actually on roll, then this may adversely affect the school when budget adjustments are made. For this reason it is important that consultees are clear about the effect on school budgets of any proposals on admission numbers.
70. **Need for Statutory Proposals.** Statutory proposals are no longer be required for an increase in the admission number of a school by 27 or more, any increases in admission numbers falling under the new School Admissions Code³. However, statutory proposals will still be required where an enlargement of the premises would increase the physical capacity of the school by more than 30 pupils (and by either 25% or 200 pupils whichever is the lesser). Increases in a Published Admission Number could be proposed during the consultation on admission arrangements.
71. Statutory proposals are not required for a reduction in an Admission Number. However, if there is a proposal to publish an admission number lower than the indicated admission number, then a Notice would be required under the Admissions Regulations.
72. **Implementation of Proposals:** No Changes to the Admission Number are planned for September 2011. Proposals for Planned Admission Numbers for September 2012 need to be agreed in spring 2011. Where internal modifications or additional space are required, to provide additional Reception Class places, this gives enough lead-in time to plan for that with the schools involved. Due account will be taken of expected demand for Reception Class places for September 2012, and the impact that has both on space requirements at schools affected and any requirement for the publication of statutory proposals.

For Further Information or query about any aspect of this Plan please contact
 Chris Swift, School Organisation and Development Team Leader, Schools Service,
 PO Box 70, Municipal Offices, Smith Street, ROCHDALE, OL16 1YD 01706 925016
chris.swift@rochdale.gov.uk

³ School Admissions Code paragraphs 1.16 to 1.22

SECTION 7: APPENDICES (Not attached to the Report, but included in the full document on the Council Website)

Appendix One (A)	School Capacity Information May 2010 - Primary and Secondary Schools
(B)	Net Capacity & Number on Roll- Primary Sector, by Township
Appendix Two (A)	Birth Distribution Maps- i.e. where children were born- <i>Heywood Township</i> - 2005-06 (Sept 2010 Admission) 2006-07 (Sept 2011 Admission) 2007-08 (Sept 2012 Admission)
(B)	<i>Middleton Township</i> -2005-06 (Sept 2010 Admission) 2006-07 (Sept 2011 Admission) 2007-08 (Sept 2012 Admission)
(C)	<i>Pennine Township</i> - 2005-06 (Sept 2010 Admission) 2006-07 (Sept 2011 Admission) 2007-08 (Sept 2012 Admission)
(D)	<i>Rochdale Township</i> - 2005-06 (Sept 2010 Admission) 2006-07 (Sept 2011 Admission) 2007-08 (Sept 2012 Admission)
(E)	<i>Birth Data by Ward</i> - table to show births in 2008-09 and 2009-10 (for Admission in 2013 and 2014 respectively)
Appendix Three	Cross border pupil movement
Appendix Four	New Housing Developments Summary
Appendix Five	Primary Schools- Number on Roll and Admission Capacity: by year group, school level data, by Township (includes location map for schools by Township)
Appendix Six	Secondary Schools- Number on Roll and Admission Capacity: by year group, school level data, by Township

Contact Officer:

Chris Swift

School Organisation and Development Team Leader

Schools Service, PO Box 70, Municipal Offices, Smith Street, Rochdale, OL16 1YD.

Telephone 01706 925016

e-mail: chris.swift@rochdale.gov.uk

22nd January 2011

APPENDIX ONE (A)
SCHOOL CAPACITY INFORMATION MAY 2010

Primary Schools		PAN	Net Cap 2010	NOR May-10	Number surplus	% Surplus
<i>Heywood Township</i>						
3314	OurLady & St Paul's RC VA	30	210	204	6	3
3510	St Joseph's RC VA	45	315	295	20	6
2062	Heap Bridge	25	175	144	31	18
3512	Woodland	60	420	383	37	9
3307	St Margaret's CE VA	30	210	208	2	1
2061	Harwood Park	45	351	253	98	28
2063	Hopwood	45	315	313	2	1
3014	All Souls CE VC	30	204	209	0	0
3006	St Luke's CE VC	30	210	215	0	0
3305	St Michael's CE Bamford VA	30	210	214	0	0
<i>Heywood Total</i>			<i>2,620</i>	<i>2438</i>	<i>196</i>	<i>9.80%</i>

<i>MIDDLETON TOWNSHIP</i>						
2041	Boarshaw	30	210	181	29	14
3513	Bowlee Park	60	420	371	49	12
2048	Hollin	30	210	181	29	14
2064	Parkfield	35	238	233	5	2
3016	Little Heaton CE VC	30	207	145	62	30
3321	Middleton Parish CE VA	30	210	214	0	0
5203	St John Fisher RC VA	30	206	201	5	2
3312	St Mary's RC Middleton VA	45	378	305	73	19
3311	St Peter's RC VA	30	210	195	15	7
3319	St Thomas More RC VA	45	315	287	28	9
2039	Alkington	60	420	389	31	7
2047	Elm Wood	58	406	375	31	8
3011	St Gabriel's CE VC	30	197	172	25	13
3322	St Michael's CE VA Alkington	30	210	222	0	0
<i>Middleton Total</i>			<i>3,837</i>	<i>3471</i>	<i>382</i>	<i>11.20%</i>

<i>PENNINE TOWNSHIP</i>						
2036	Littleborough	60	419	369	50	12
3013	Stansfield Hall CE	22	140	78	62	44
3306	Holy Trinity CE	22	168	152	16	10
3009	St Andrew's CE	30	198	175	23	12
5201	Smithy Bridge	60	420	410	10	2
5202	St James' CE	30	210	229	0	0
2043	Moorhouse	30	210	196	14	7
2044	Newhey	30	171	190	0	0
3323	Milnrow Parish CE	30	210	168	42	20
3325	St Thomas' CE	21	147	138	9	6
5200	Crossgates	36	227	251	0	0
3310	St Mary's RCL'boro	30	210	196	14	7
<i>Pennine Total</i>			<i>2,730</i>	<i>2552</i>	<i>240</i>	<i>8.8%</i>

	PAN	Net Cap 2010	NOR May-10	Number surplus	% Surplus	
ROCHDALE TOWNSHIP						
5205	Bamford F	45	315	312	3	1
2029	Whittaker Moss	35	238	247	0	0
2018	Norden	60	420	375	45	11
2027	Caldershaw	30	210	199	11	5
2015	Meanwood	60	407	366	41	10
2021	Spotland	60	420	365	55	13
2003	Shawclough	60	420	399	21	5
5204	Healey F	30	210	212	0	0
2006	Greenbank	60	420	355	65	15
3506	All Saints CE	30	210	198	12	6
2009	Heybrook	75	525	537	0	0
2028	Belfield	40	258	262	0	0
2067	Kentmere	45	315	255	60	19
2065	Hamer	38	266	251	15	6
2001	Broadfield	60	420	357	63	15
2004	Deeplish	45	303	314	0	0
2024	Lowerplace	60	420	394	26	6
3003	St Peter's CE	60	389	404	0	0
2000	Brimrod	30	210	189	21	10
2025	Marland Hill	60	418	353	65	16
2032	Ashfield Valley	30	207	188	19	9
3511	Sandbrook	60	420	332	88	21
3004	St Mary's CE VC	30	204	208	0	0
2002	Castleton	30	210	196	14	7
3002	St Edward's CE	50	350	338	12	3
3007	St John'sCE T'ham	15	70	76	0	0
3509	Alice Ingham RC	24	168	151	17	10
3507	Holy Family RC	30	210	197	13	6
3505	Sacred Heart RC	30	210	205	5	2
3500	St Gabriel's RC	30	203	174	29	14
3501	St John's RC	30	210	207	3	1
3503	St Patrick's RC	40	296	301	0	0
3508	St Vincent's RC	60	420	413	7	2
Rochdale Total			9,972	9330	710	9.50%
BOROUGH TOTAL			19159		1,528	8%

Secondary Schools

		PAN	Net Cap 2010	NOR May-10	Number surplus	% Surplus
Pennine Township						
5401	Hollingworth (F)	230	1150	1210	0	0
5400	Wardle (F)	240	1341	1118	223	17
<i>Pennine Total</i>			<i>2491</i>	<i>2328</i>	<i>223</i>	<i>17</i>

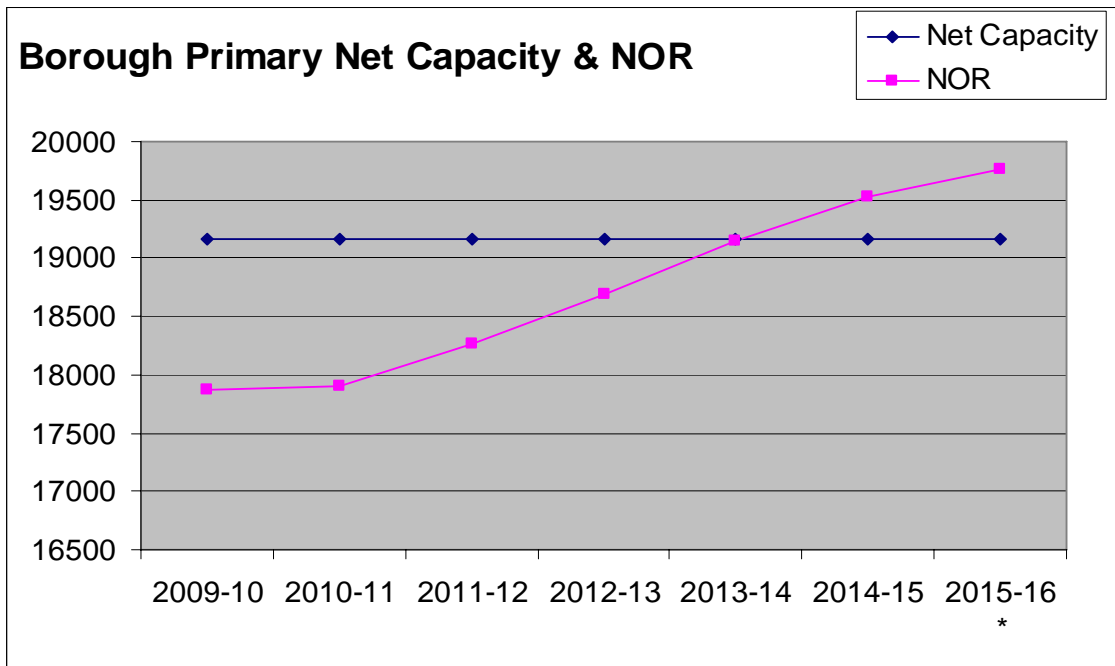
Rochdale Township						
4612	St.Cuthbert's RC	270	1,477	1433	44	3
4085	Balderstone	218	675	661	429	39
4087	Springhill	180	664	684	216	24
4088	Matthew Moss	180	886	883	41	4
4089	Oulder Hill	300	1,255	1266	292	19
4086	Falinge Park	240	1,173	1179	103	8
<i>Rochdale Total</i>			<i>6,130</i>	<i>6106</i>	<i>1125</i>	<i>18.4</i>

Middleton Township						
4091	Middleton Tech	210	1,090	1100	0	0
4611	Cardinal LangleyRC	180	1,055	1090	0	0
	St.Anne's Academy	150	n/a	n/a	n/a	n/a
<i>Middleton Total</i>			<i>2,145</i>	<i>2190</i>	<i>0</i>	<i>0</i>

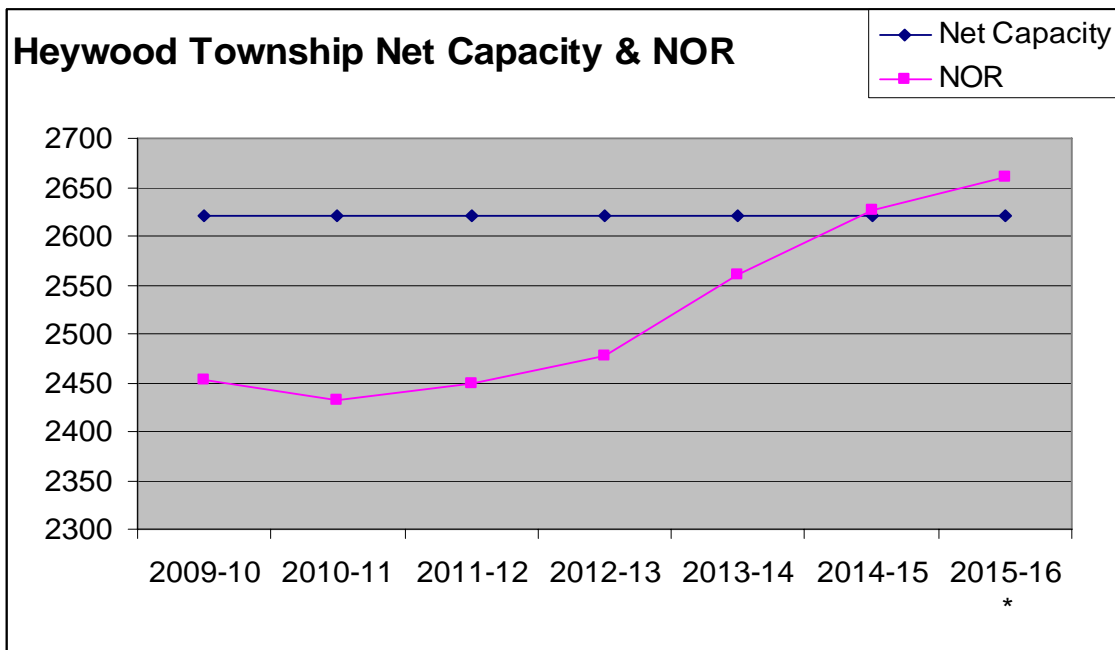
Heywood Township						
4083	Siddal Moor	210	1,006	1007	127	11
4801	HolyFamilyRC&CE	120	600	578	22	4
4084	Heywood	0	223	233	667	74
<i>Heywood Total</i>			<i>1,829</i>	<i>1818</i>	<i>816</i>	<i>44.6</i>

<i>BOROUGH SECONDARY</i>			<i>10,450</i>		<i>2164</i>	<i>21%</i>
--------------------------	--	--	---------------	--	-------------	------------

**APPENDIX ONE (B)
NET CAPACITY & NOR PRIMARY SECTOR**



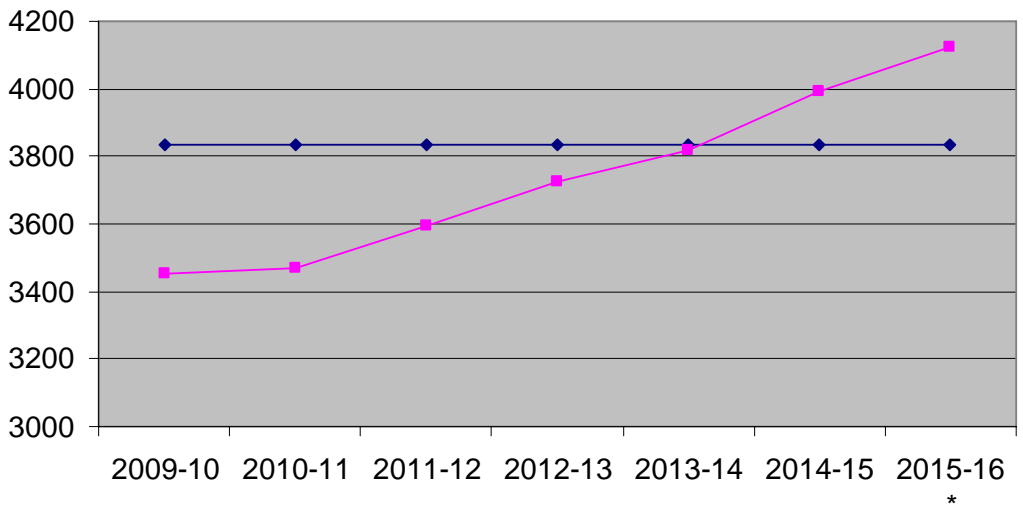
borough Primary							
	2009-10	2010-11	2011-12	2012-13	2013-14	2014-15	2015-16
Net Capacity	19159	19159	19159	19159	19159	19159	19159
NOR	17867	17897	18259	18696	19150	19524	19770



Heywood Primary							
	2009-10	2010-11	2011-12	2012-13	2013-14	2014-15	2015-16 *
Net Capacity	2620	2620	2620	2620	2620	2620	2620
NOR	2453	2433	2449	2477	2560	2626	2660

Middleton Township Net Capacity & NOR

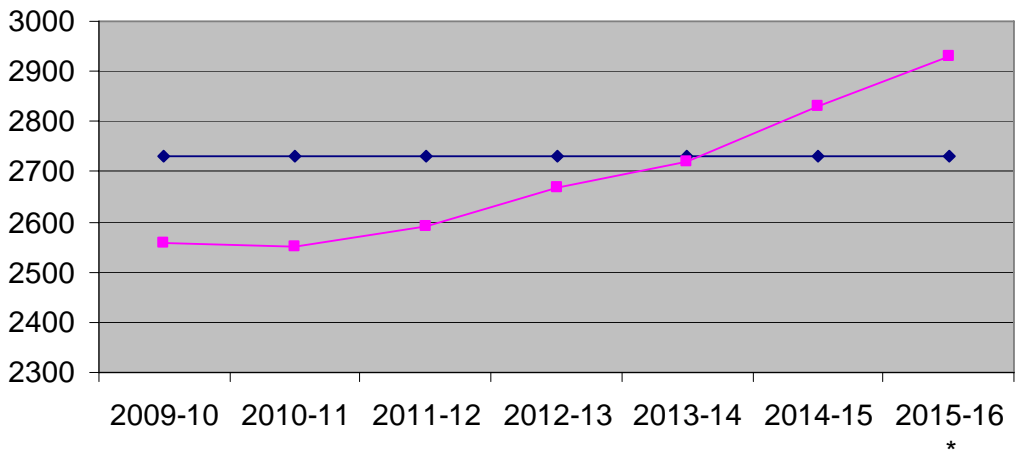
◆ Net Capacity
 ■ NOR



Middleton Primary							
	2009-10	2010-11	2011-12	2012-13	2013-14	2014-15	2015-16 *
Net Capacity	3837	3837	3837	3837	3837	3837	3837
NOR	3452	3468	3593	3724	3820	3993	4122

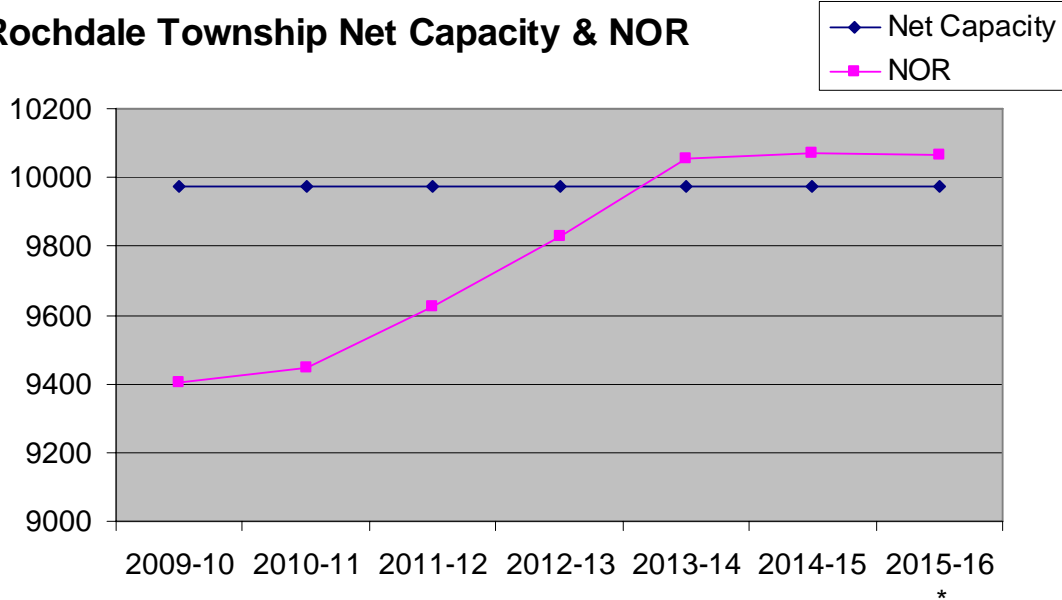
Pennine Township Net Capacity & NOR

◆ Net Capacity
 ■ NOR



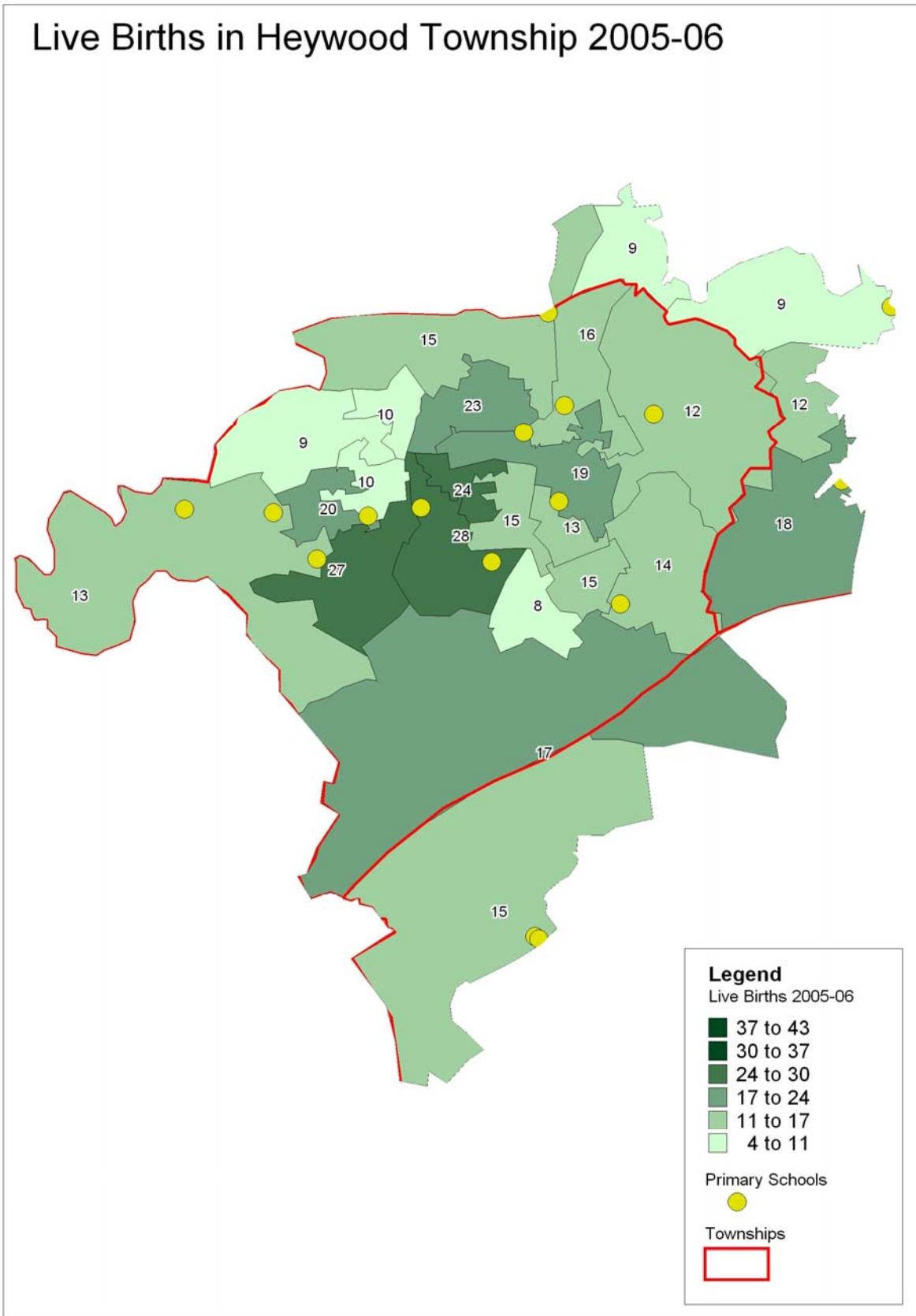
Pennine Primary							
	2009-10	2010-11	2011-12	2012-13	2013-14	2014-15	2015-16 *
Net Capacity	2730	2730	2730	2730	2730	2730	2730
NOR	2558	2551	2590	2669	2721	2830	2929

Rochdale Township Net Capacity & NOR



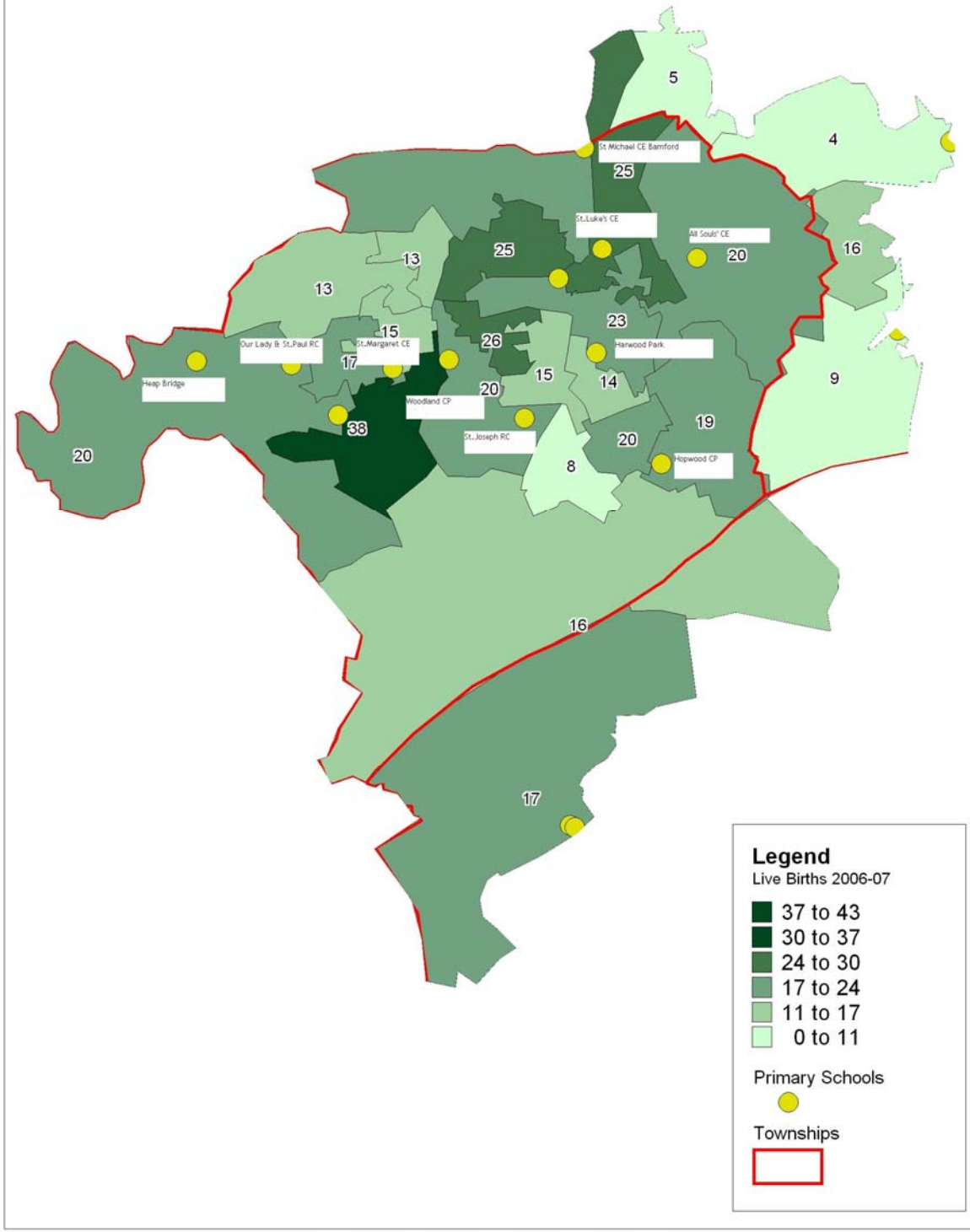
Rochdale Primary							
	2009-10	2010-11	2011-12	2012-13	2013-14	2014-15	2015-16 *
Net Capacity	9972	9972	9972	9972	9972	9972	9972
NOR	9404	9445	9626	9831	10053	10073	10063

**APPENDIX TWO - BIRTH DISTRIBUTION MAPS
(A) HEYWOOD TOWNSHIP**



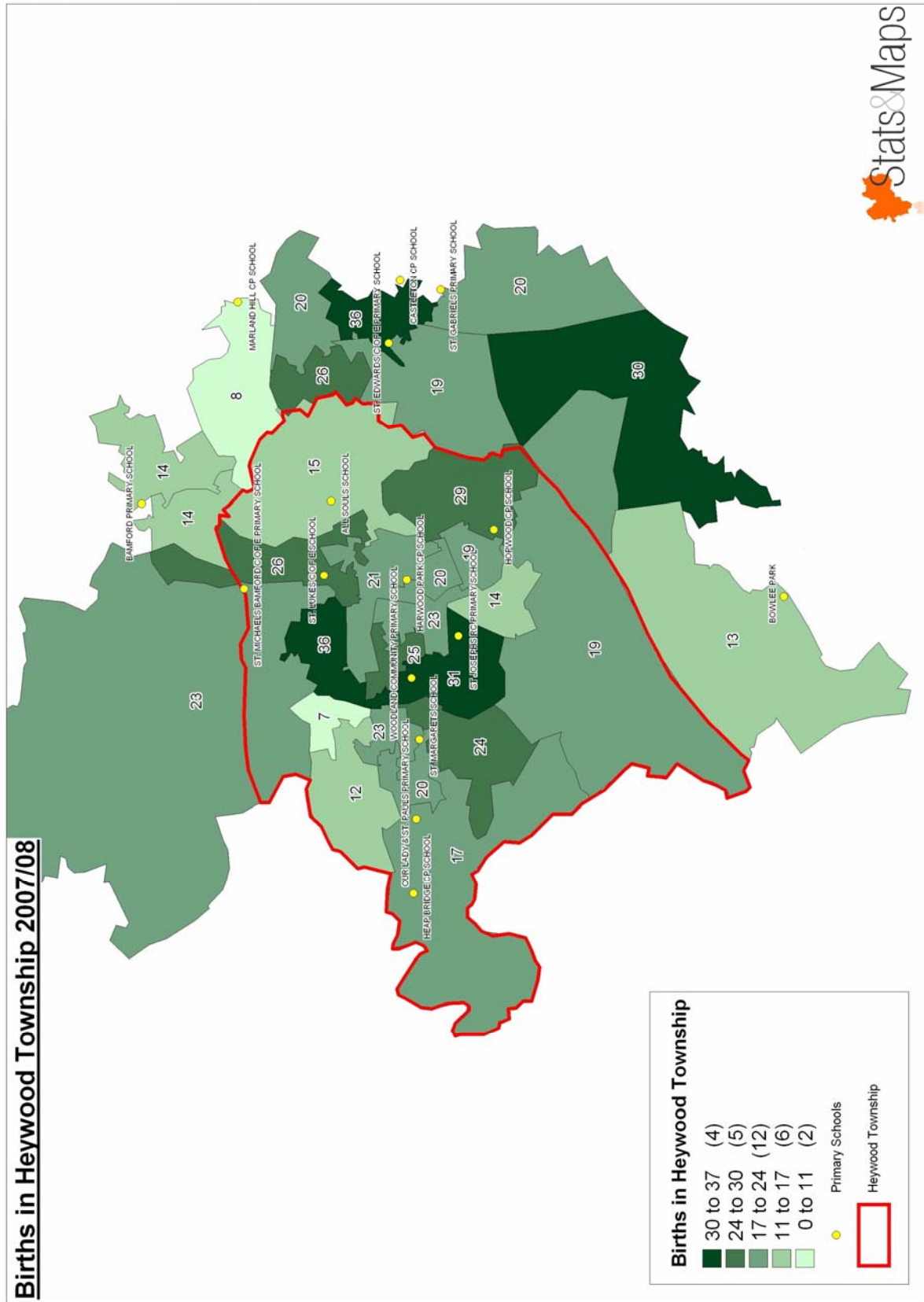
Note: children Born in 2005-06 will seek reception places in September 2010

Live Births in Heywood Township 2006-07



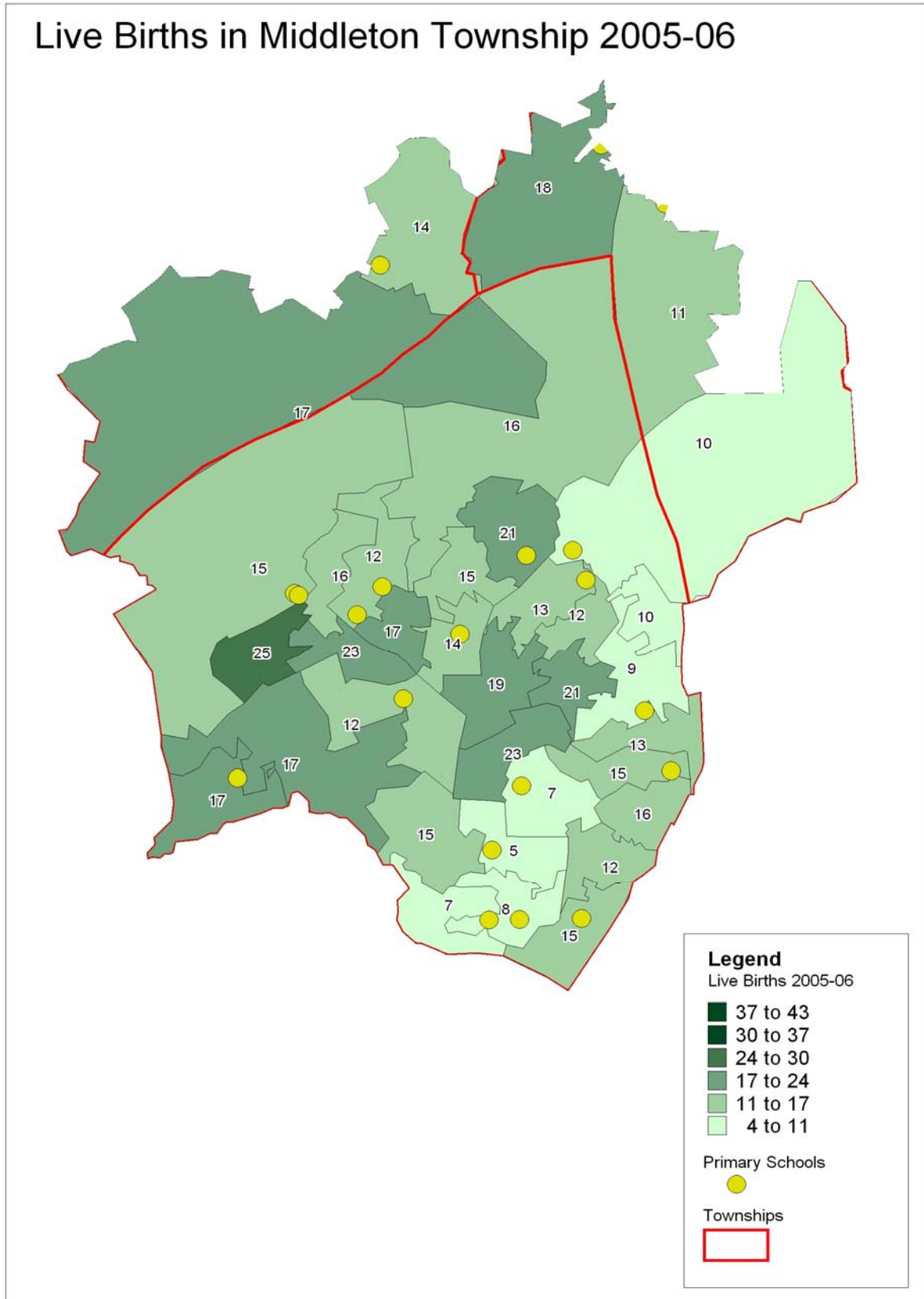
Note: children born in 2006-07 will seek Reception Class places in September 2011.

Births in Heywood Township 2007-8



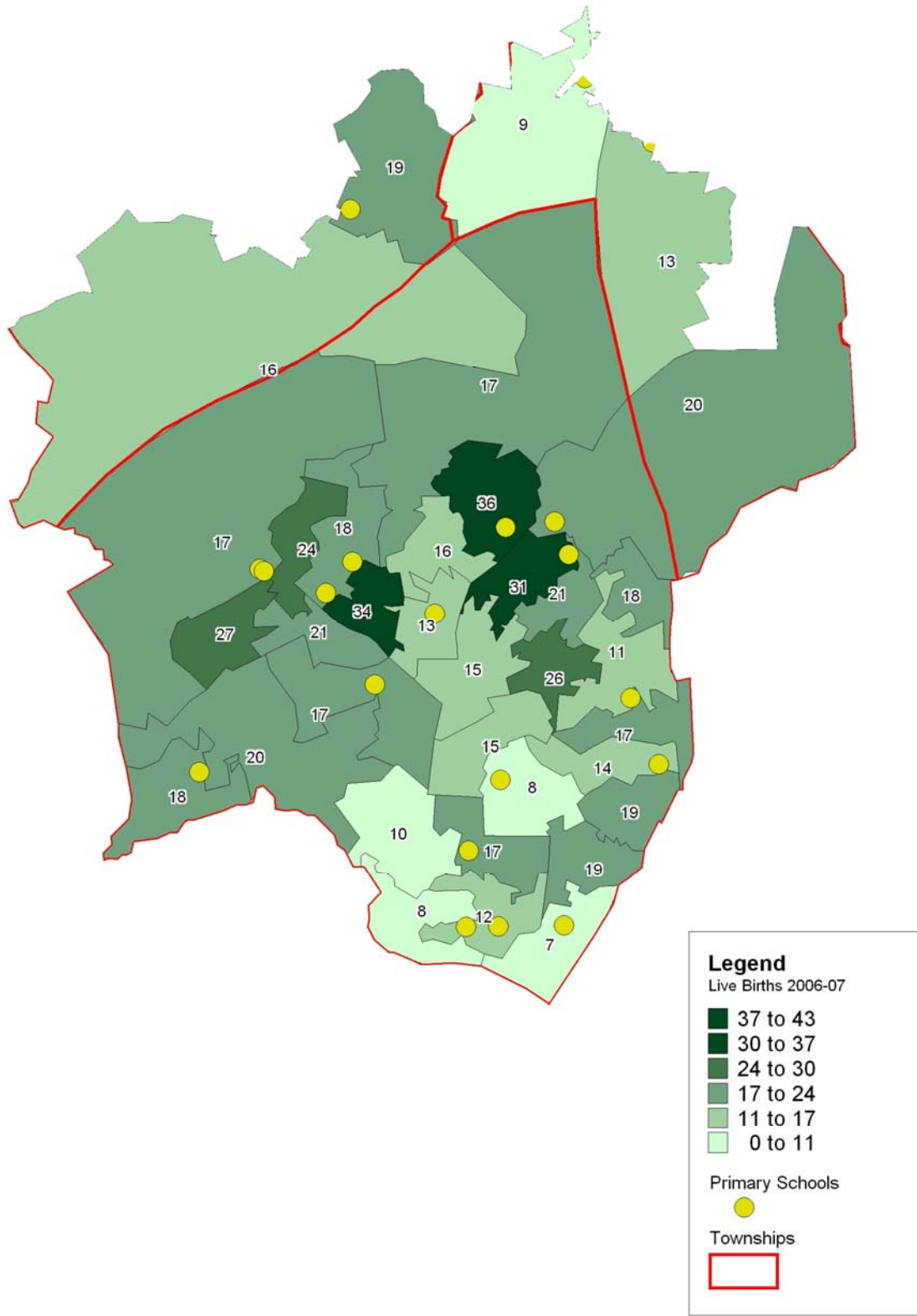
Note: children born in 2007-08 will seek Reception Class places in September 2012.

**APPENDIX TWO - BIRTH DISTRIBUTION MAPS
(B) MIDDLETON TOWNSHIP**



Note: Children born in 2005-06 will seek Reception Class places in September 2010.

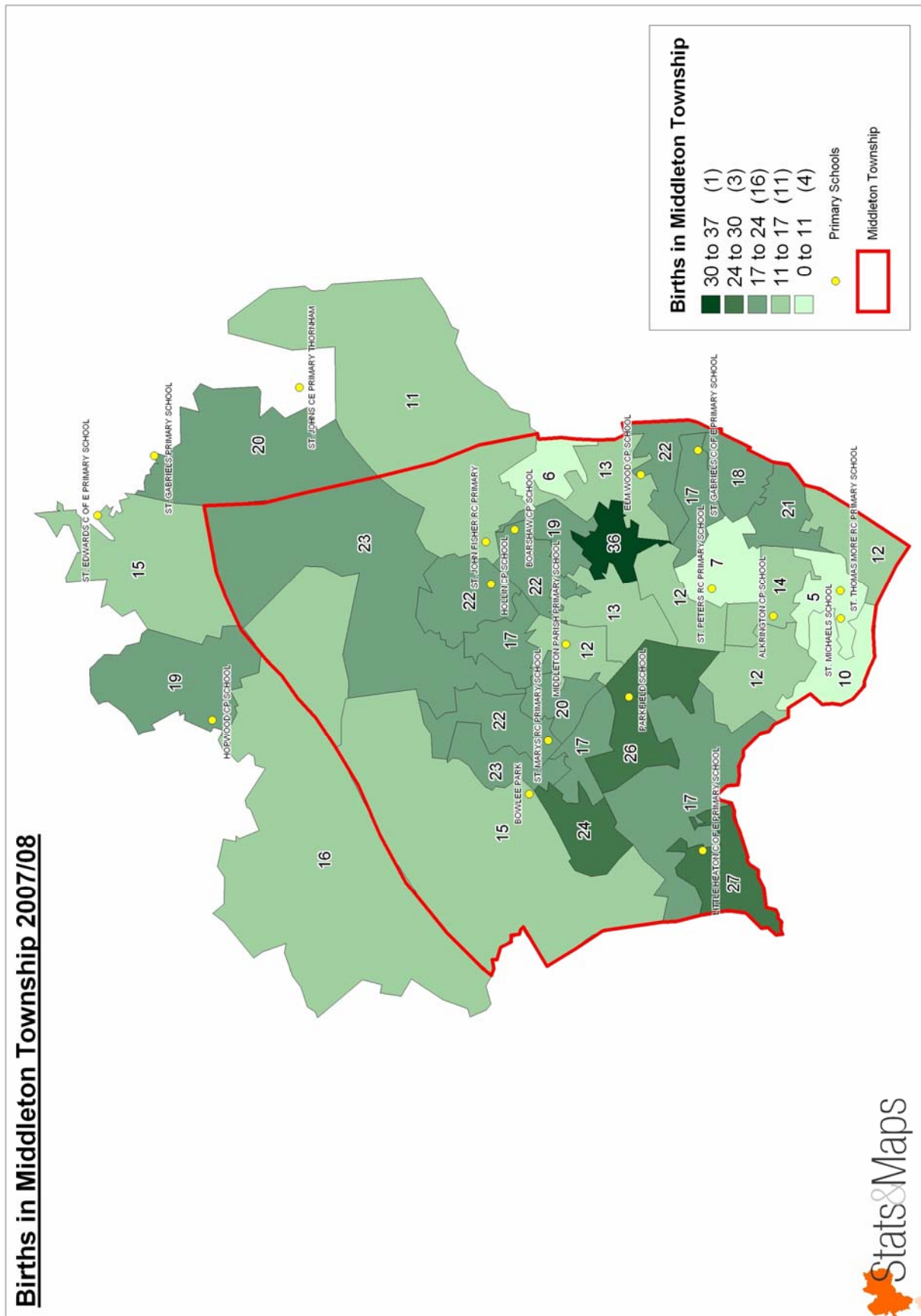
Live Births in Middleton Township 2006-07



Note: children born in 2006-07 will seek Reception Class places in September 2011.

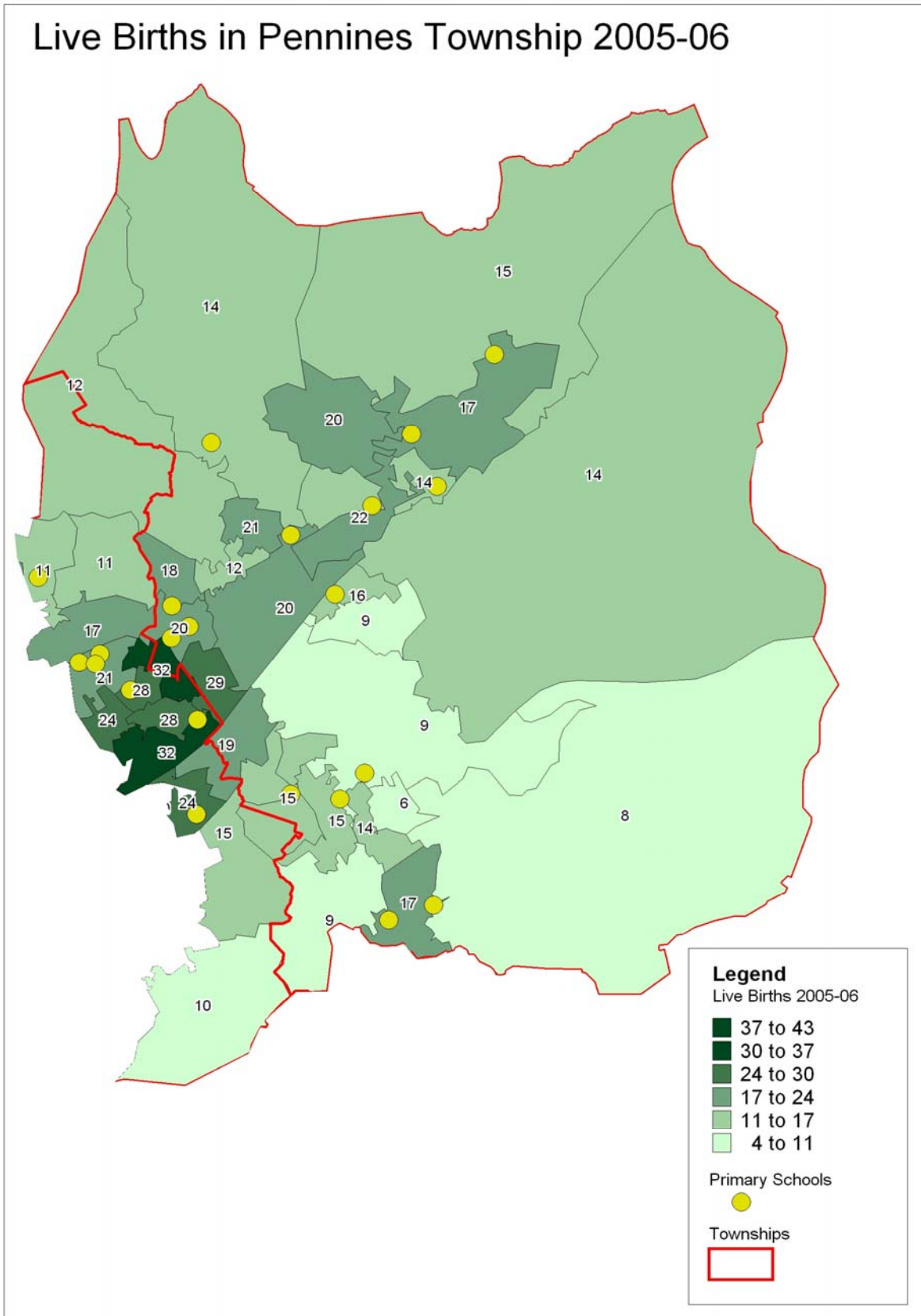
BIRTHS MIDDLETON TOWNSHIP 2007-08

Births in Middleton Township 2007/08



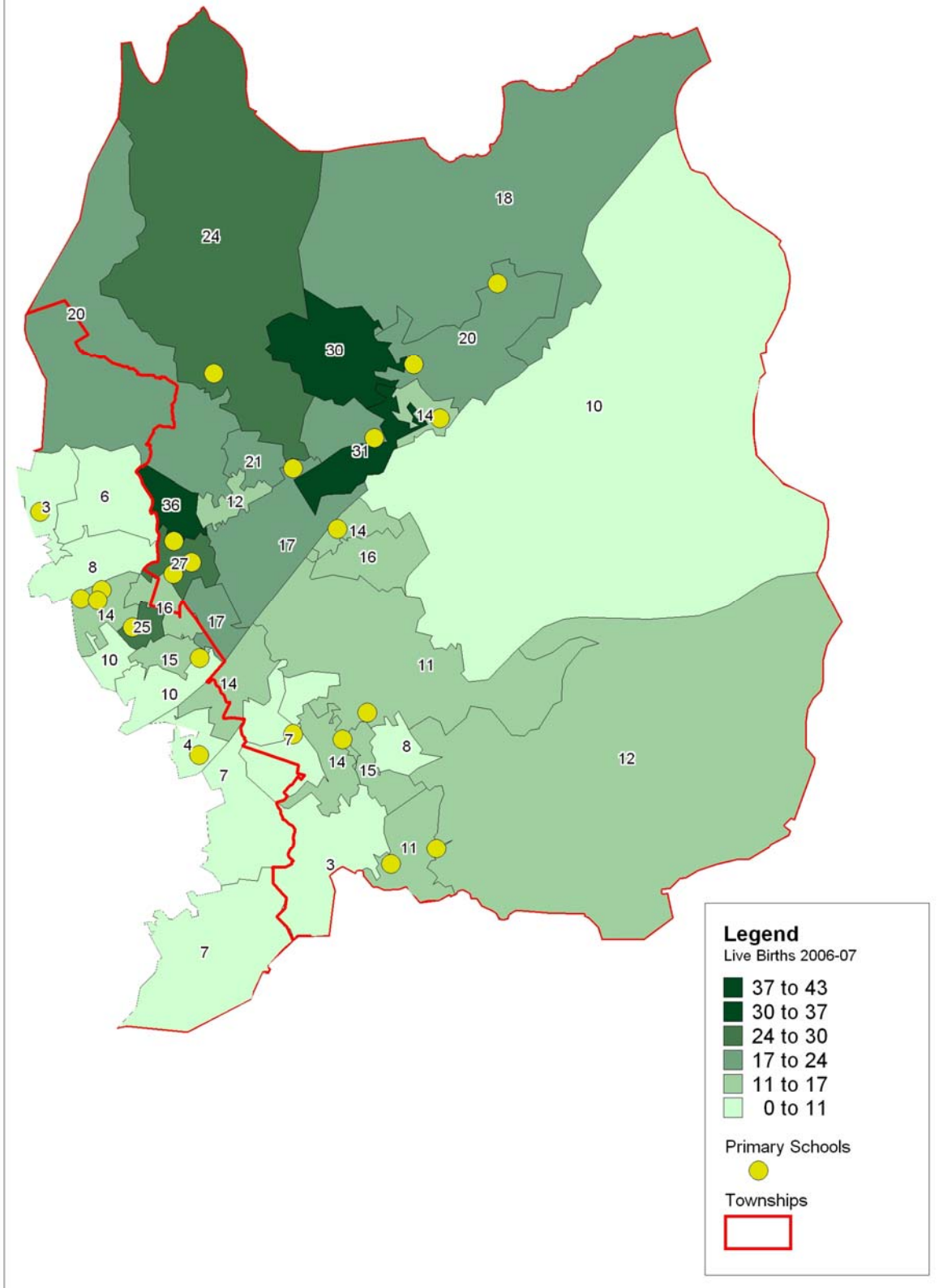
Children born in 2007-08 will seek Reception Class places in September 2012

**APPENDIX TWO - BIRTH DISTRIBUTION MAPS
(C) PENNINE TOWNSHIP**

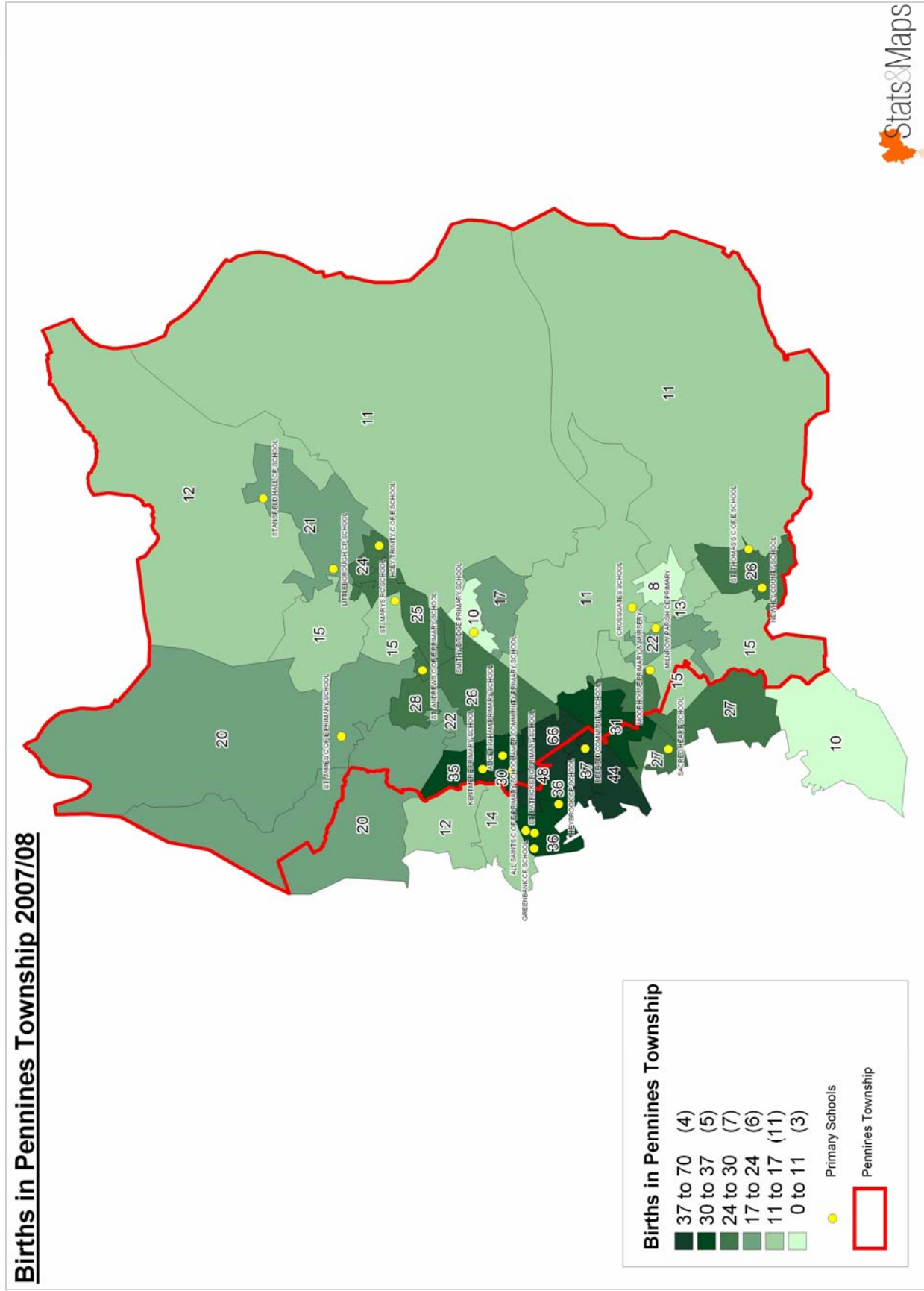


Note: Children born in 2005-06 will seek Reception Class places in September 2010.

Live Births in Pennines Township 2006-07

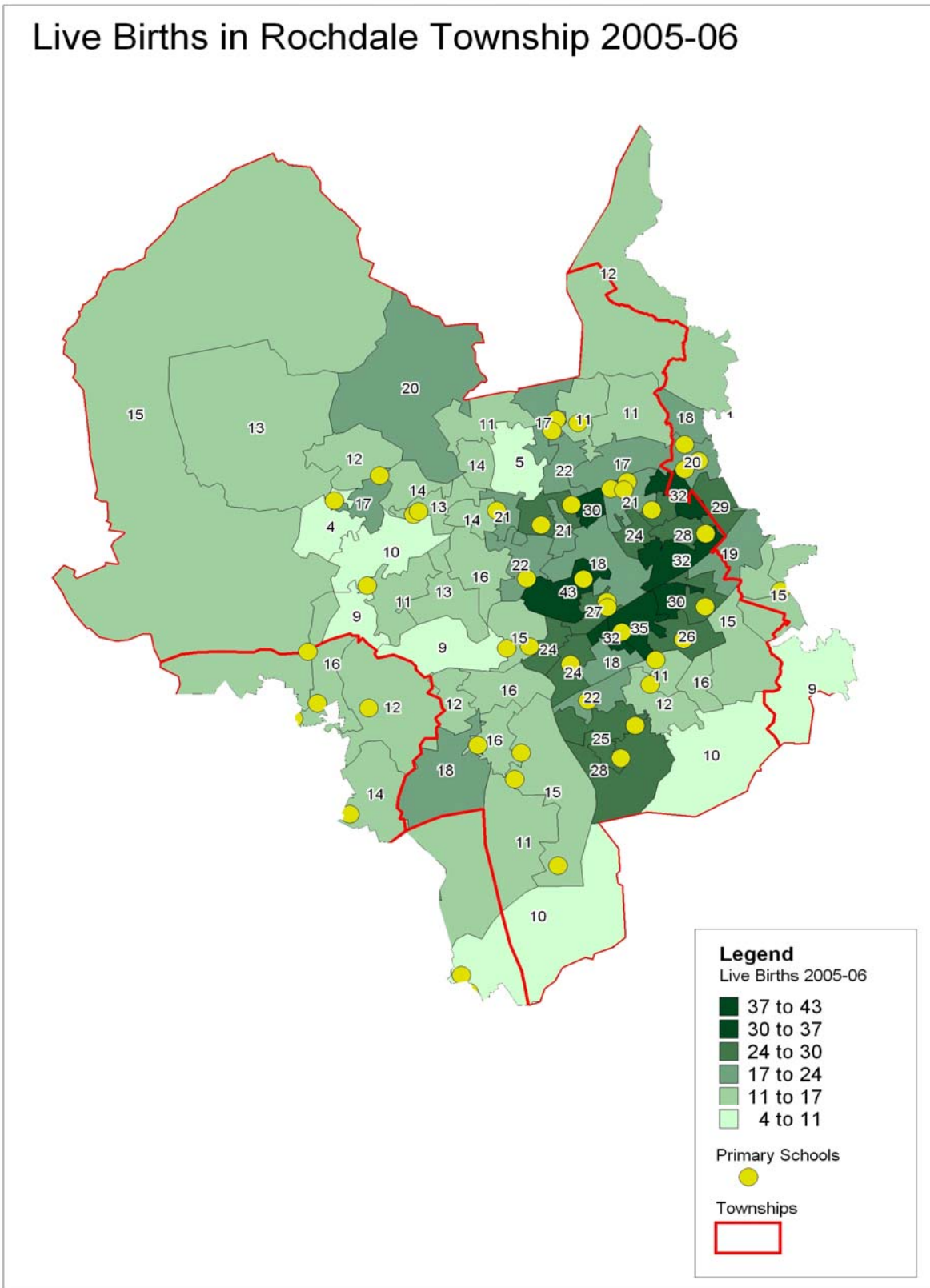


Note: Children born in 2006-07 will seek Reception Class places in September 2011.



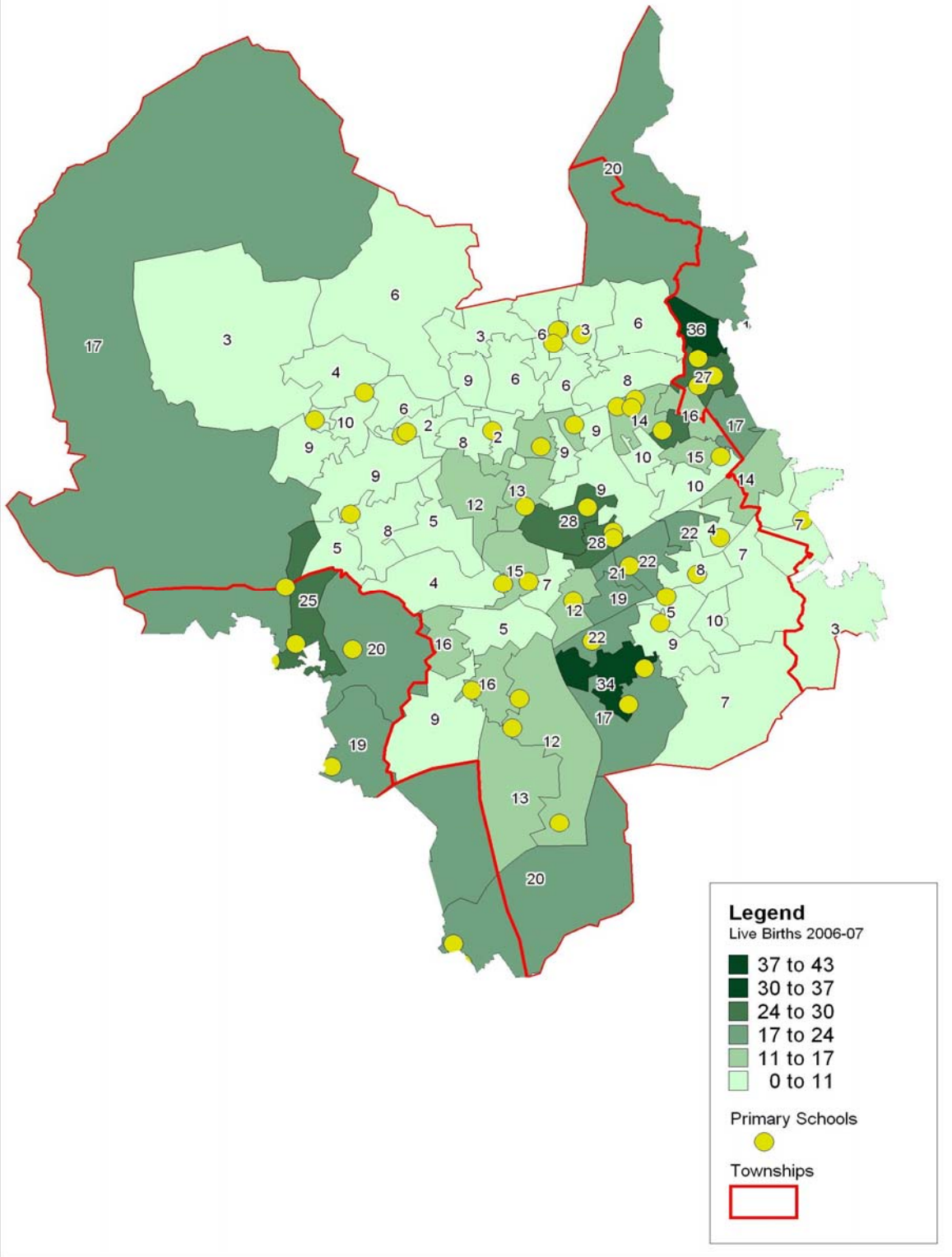
Children born in 2007-08 will seek Reception Class places in September 2012

**APPENDIX TWO - BIRTH DISTRIBUTION MAPS
(D) ROCHDALE TOWNSHIP**



Note: Children born in 2005-06 will seek Reception Class places in September 2010.

Live Births in Rochdale Township 2006-07

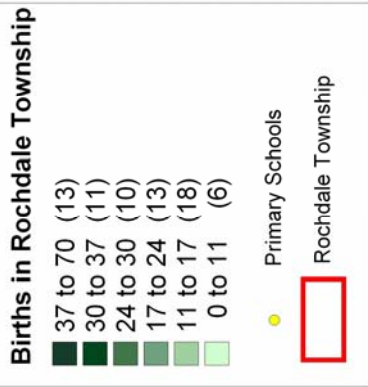
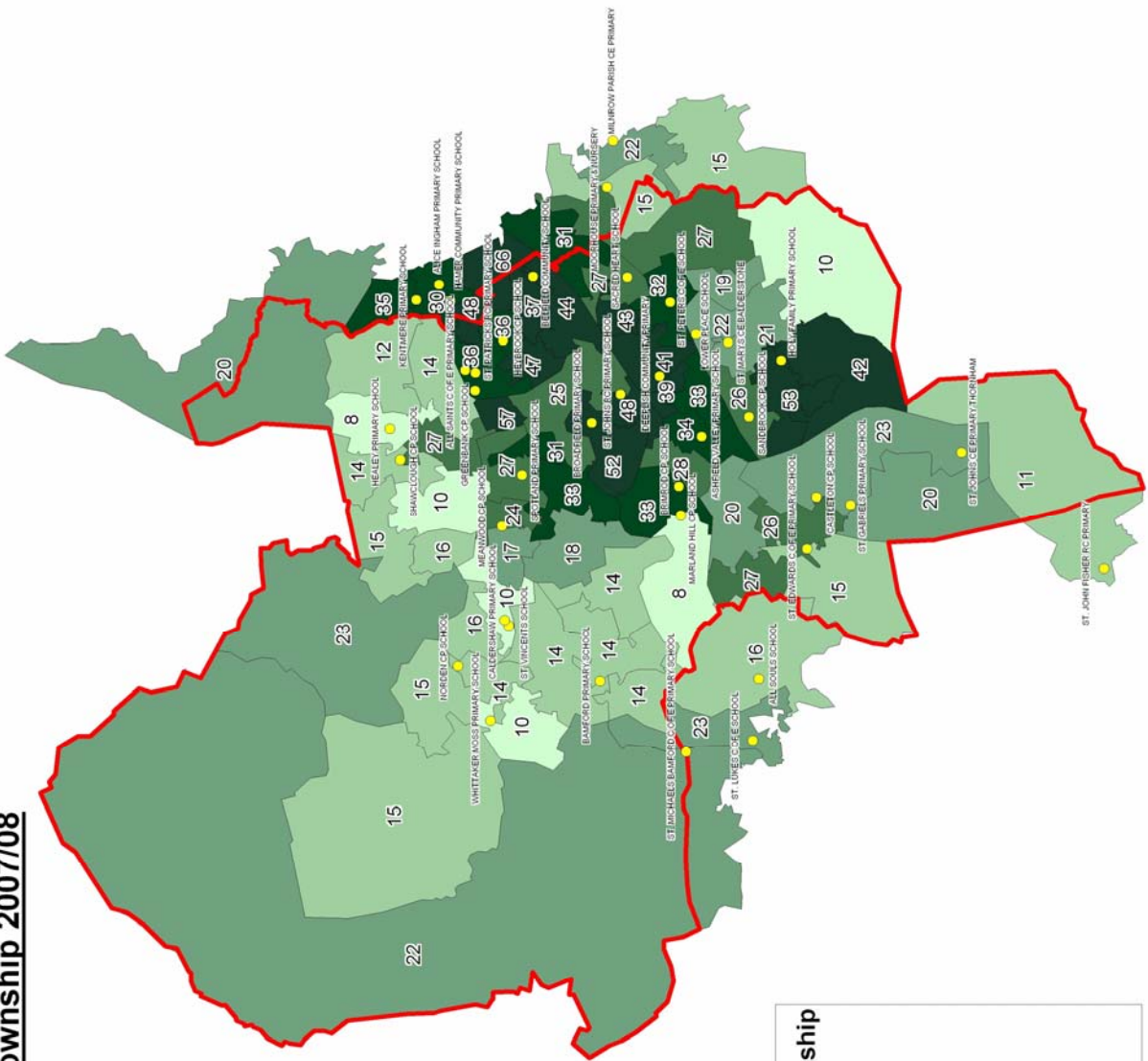


Note: Children born in 2006-07 will seek Reception Class places in September 2011

ROCHDALE TOWNSHIP BIRTHS 2007-08



Births in Rochdale Township 2007/08



Note: Children born in 2007-08 will seek Reception Class places in September 2012

APPENDIX TWO - BIRTH DATA BY WARD

**(E) Table to show births in 2008-09 and 2009-10
(for admission in 2013 and 2014 respectively)**

Ward Name	Live Births	
	2008-09	2009-10
Balderstone and Kirkholt	176	138
Bamford	102	113
Castleton	135	117
Central Rochdale	256	233
Healey	116	126
Kingsway	238	213
Norden	99	96
Spotland and Falinge	149	178
Milkstone and Deeplish	271	275
Littleborough Lakeside	116	100
Milnrow and Newhey	108	115
Wardle and West Littleborough	110	114
Smallbridge and Firgrove	204	198
North Heywood	139	151
West Heywood	171	145
Hopwood Hall	121	137
North Middleton	130	143
East Middleton	107	123
South Middleton	78	123
West Middleton	162	177
Rochdale	1542	1489
Pennine	538	527
Heywood	431	433
Middleton	477	566
Rochdale Borough	2988	3015

Data relates to births occurring between September 2009 and August 2010

Source of Data: Public Health Birth File (ONS)

APPENDIX THREE - CROSS BORDER PUPIL MOVEMENT

Number of Children living in Rochdale and attending schools in other Local Authorities:

Primary

	Oldham	Lancashire	Bury	Manchester	Calderdale	Salford	Tameside	Bolton	Stockport
2009	365	67	47	50	21	5	8	0	0
2008	396	67	40	73	16	8	9	0	0
2007	349	65	34	58	18	9	3	0	0

Secondary

2009	631	264	207	64	45	7	4	24	3
2008	630	207	208	70	59	3	6	30	0
2007	623	196	214	83	50	3	4	5	3

Number of Children living outside Rochdale and attending Rochdale schools

Primary

	Oldham	Lancashire	Bury	Manchester	Calderdale	Salford	Tameside	Bolton	Stockport
2009	75	85	54	105	15	0	0	0	0
2008	69	86	61	104	11	10	0	0	0

Secondary

2009	204	56	32	116	20	0	0	0	0
2008	197	72	44	108	16	8	0	0	0

Cross Border Movement- % by year group

% Pupils resident in other LAs & attending Rochdale Schools- Inward migration

	R	Y1	Y2	Y3	Y4	Y5	Y6	Y7	Y8	Y9	Y10	Y11	TOTAL
2009	1.5	2.1	1.9	1.7	2.2	2.3	1.7	3.5	3.2	3.4	3.8	3.6	2.6
2008	2.2	1.8	1.6	2.1	2.1	1.6	2.2	2.7	3.6	3.5	3.5	4.6	2.6

% Pupils resident Rochdale & attending other LA Schools- Outward migration

	R	Y1	Y2	Y3	Y4	Y5	Y6	Y7	Y8	Y9	Y10	Y11	TOTAL
2009	2.5	3.4	2.7	3.4	3.3	3.3	3.8	10.2	10.1	10.8	9.4	9.4	6
2008	3.5	2.8	3.2	3.3	3.4	3.9	4.1	9.9	9.9	8.9	8.8	10.6	6

Source- DfE Schools, Pupils, & their Characteristics 2009, 2008, 2007

APPENDIX FOUR - NEW HOUSING DEVELOPMENTS SUMMARY

New Housing Developments SUMMARY

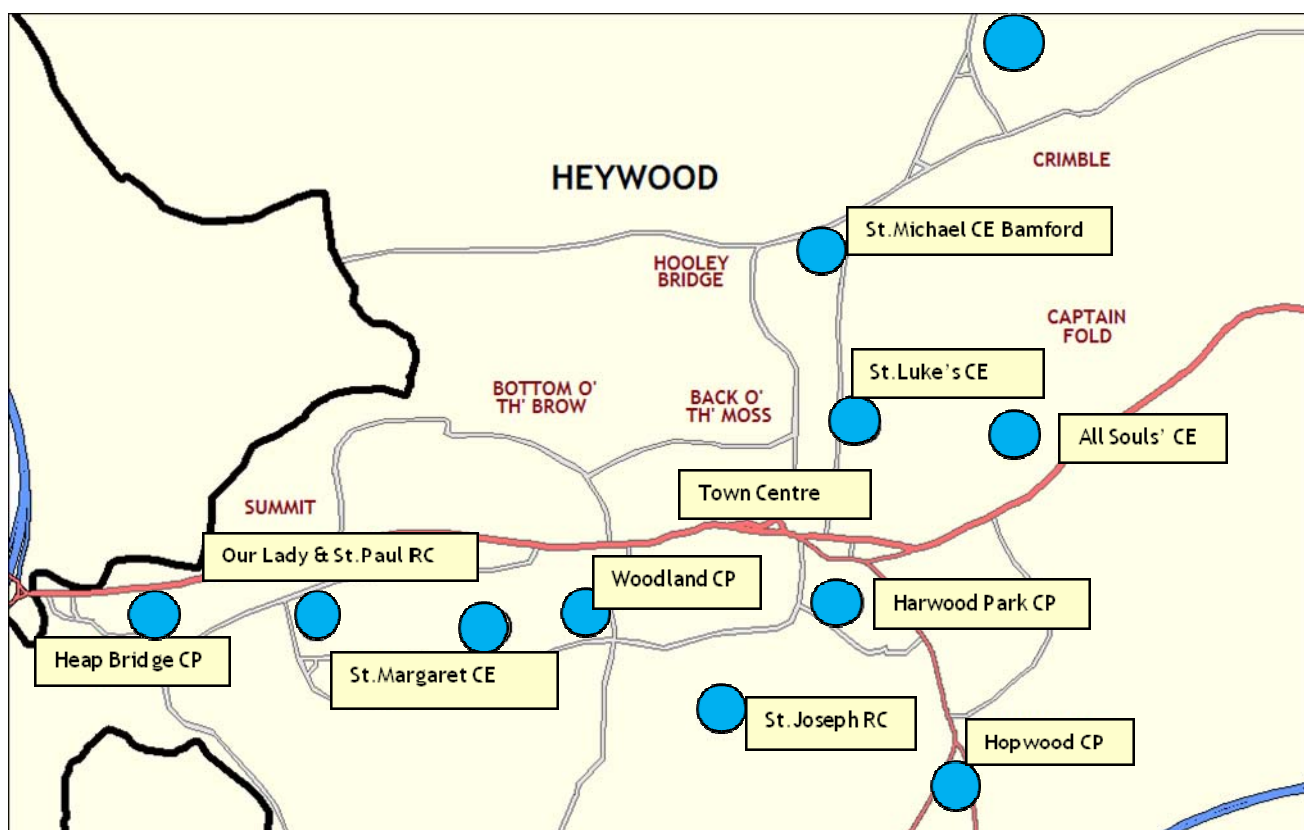
	AREA	CAPACITY	Years 0-5	Years 6-10	Years 11-15	Years 15+
Heywood						
Planning Permissions	11.56	392	123	169	100	0
Under Construction	18.28	647	466	0	0	0
New Sites identified	13.76	537	0	227	220	90
	43.6	1576	589	396	320	90
Potential Primary Children			124	83	67	19
Potential Secondary Children			88	59	48	14
Middleton						
Planning Permissions	10.14	479	160	319	0	0
Under Construction	10.76	613	519	0	0	0
New Sites identified	10.96	485	50	386	34	15
	31.86	1577	729	705	34	15
Potential Primary Children			153	148	7	3
Potential Secondary Children			109	106	5	2
Pennine						
Planning Permissions	17.26	537	118	405	14	0
Under Construction	4.55	145	466	0	0	0
New Sites identified	9.7	307	0	233	74	0
	31.51	989	584	638	88	0
Potential Primary Children			123	134	18	0
Potential Secondary Children			88	96	13	0
Rochdale						
Planning Permissions	40.45	1557	773	664	120	0
Under Construction	10	377	250	0	0	0
New Sites identified	56.28	1802	31	1052	551	168
	106.73	3736	1054	1716	671	168
Potential Primary Children			221	360	141	35
Potential Secondary Children			158	257	101	25
TOTAL						
Planning Permissions	79.41	2965	1174	1557	234	0
Under Construction	43.59	1782	1335	0	0	0
New Sites identified	90.7	3132	81	1898	879	273
	213.7	7879	2590	3455	1113	273
Potential Primary Children			544	726	234	57
Potential Secondary Children			389	518	167	41

APPENDIX FIVE- Primary Schools Number on Roll and Admission Capacity
By year Group, school level data, by Township
Includes location map for Schools

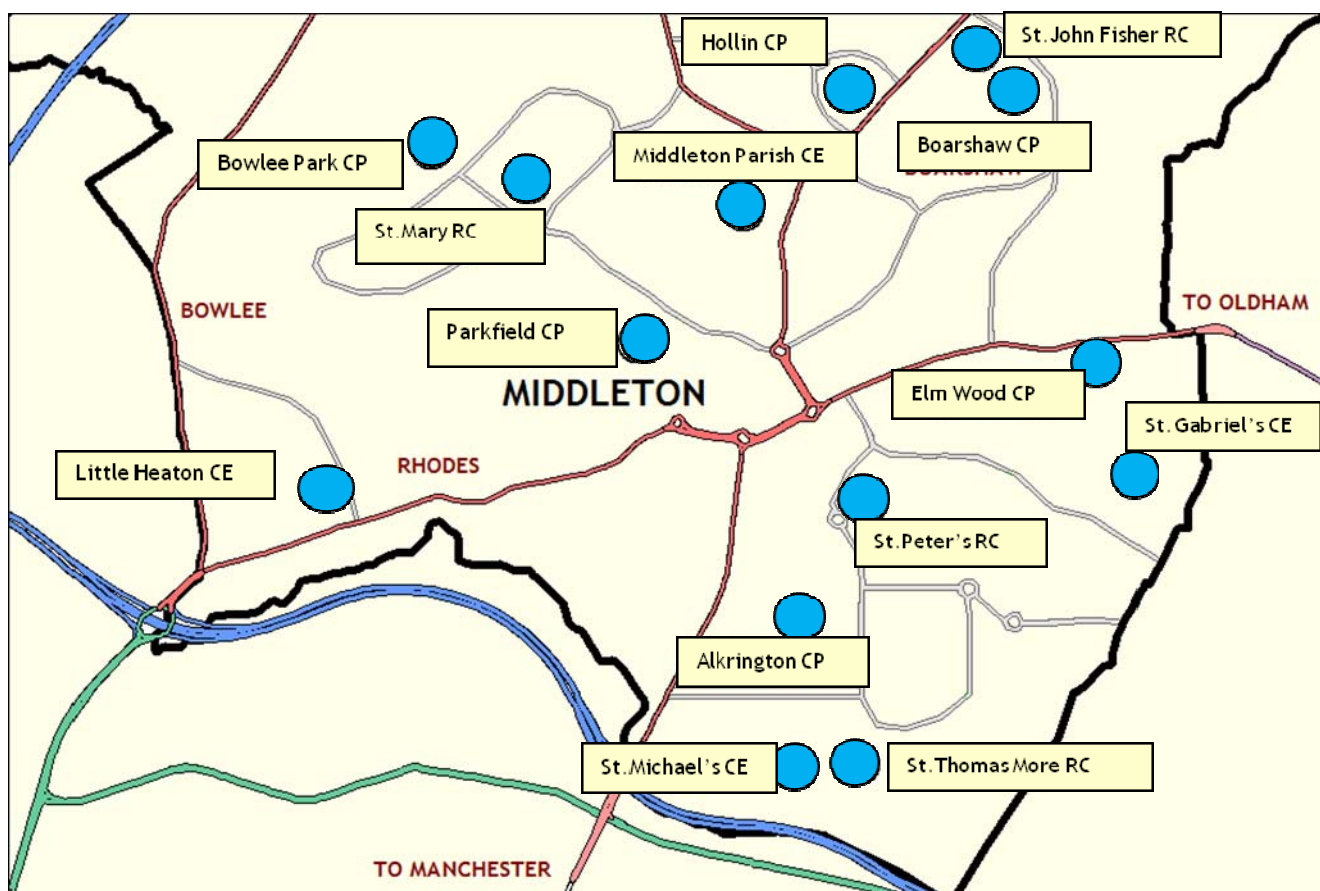
HEYWOOD TOWNSHIP																
DfE No	School	PAN	R	PAN	Y1	PAN	Y2	PAN	Y3	PAN	Y4	PAN	Y5	PAN	Y6	TOTAL
3314	OurLady&St Paul'sRC	30	30	30	28	30	29	30	28	30	24	30	29	45	27	195
3510	St Joseph's RC VA	45	43	45	45	45	45	45	33	45	36	45	47	59	44	293
	<i>vacancies</i>		2		2		1		14		15		1		33	68
2062	Heap Bridge	25	29	25	26	25	17	25	23	25	13	25	22	25	25	155
3512	Woodland	60	60	60	57	60	55	60	44	60	52	60	59	60	51	378
3307	St Margaret's CE VA	30	30	30	28	30	24	30	29	30	29	30	32	30	29	201
	<i>vacancies</i>		0		5		19		19		21		4		10	78
2061	Harwood Park	45	48	45	42	45	39	60	23	60	25	60	47	60	40	264
2063	Hopwood	45	45	45	45	45	45	45	45	45	47	45	45	45	44	316
3014	All Souls CE VC	30	29	30	30	30	30	30	28	30	30	30	30	30	30	207
3006	St Luke's CE VC	30	30	30	30	30	30	30	30	30	29	30	31	30	32	212
	<i>vacancies</i>		1		3		6		39		36		13		21	119
3305	St Michael's CE B'ford	30	30	30	29	30	30	30	30	35	29	35	30	35	34	212
	<i>vacancies</i>		0		1		0		0		6		5		1	13
	<i>Heywood Total</i>	370	374	370	360	385	344	390	313	390	314	419	372	419	356	2433

DfE No= Government school number RC= Roman Catholic CE= Church of England
 PAN = Planned Admission Number VA= Voluntary Aided VC= Voluntary Controlled
 R-Reception Class; Y1=Year1; Y2=Year2; Y3=Year3; Y4=Year4; Y5=Year5; Y6=Year 6

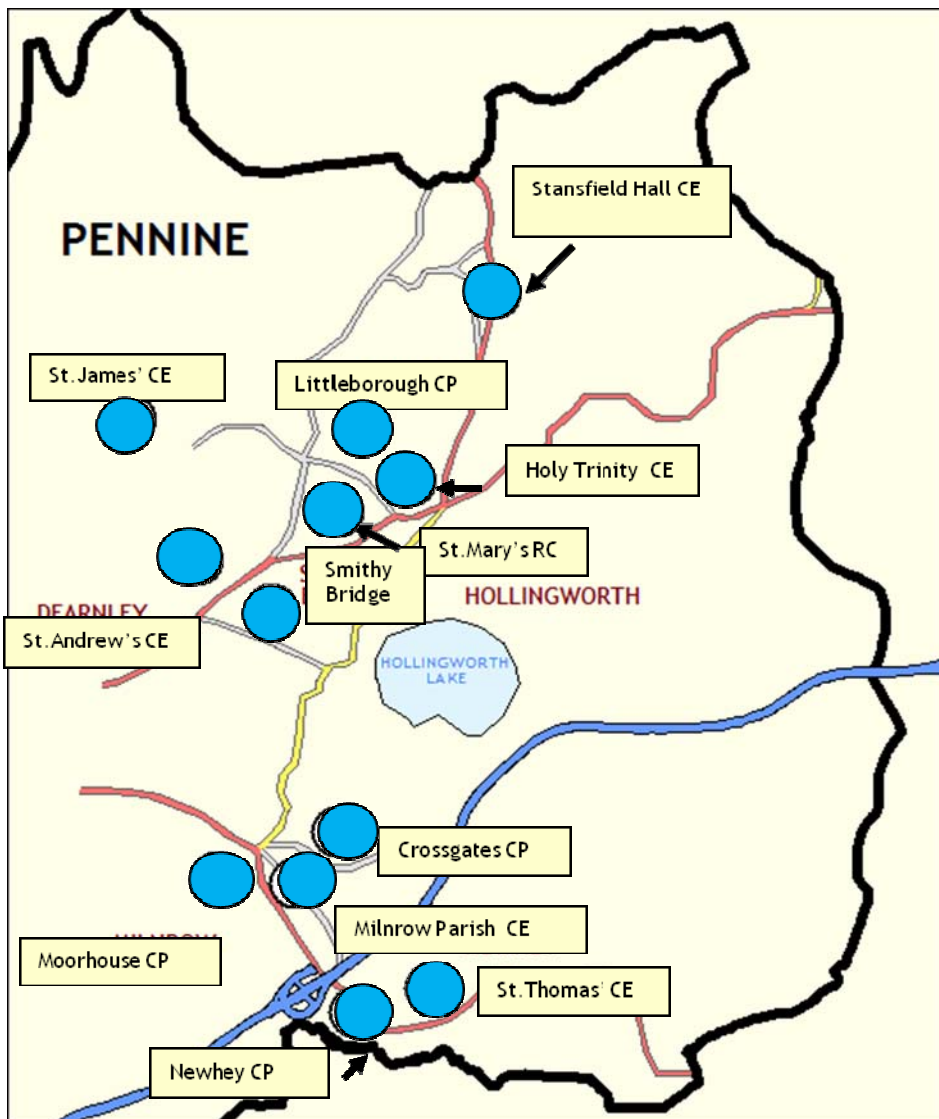
=No vacancies in Year Group
 = Vacancies in Year Group



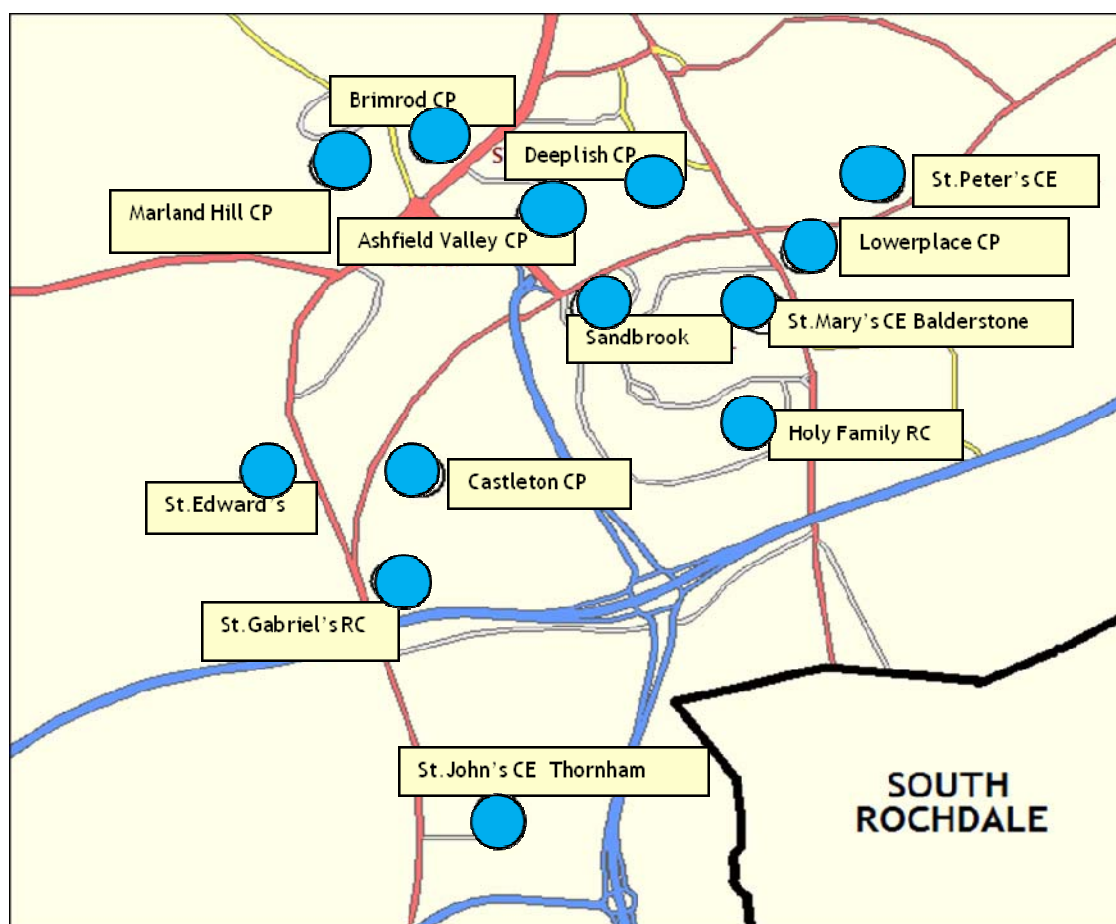
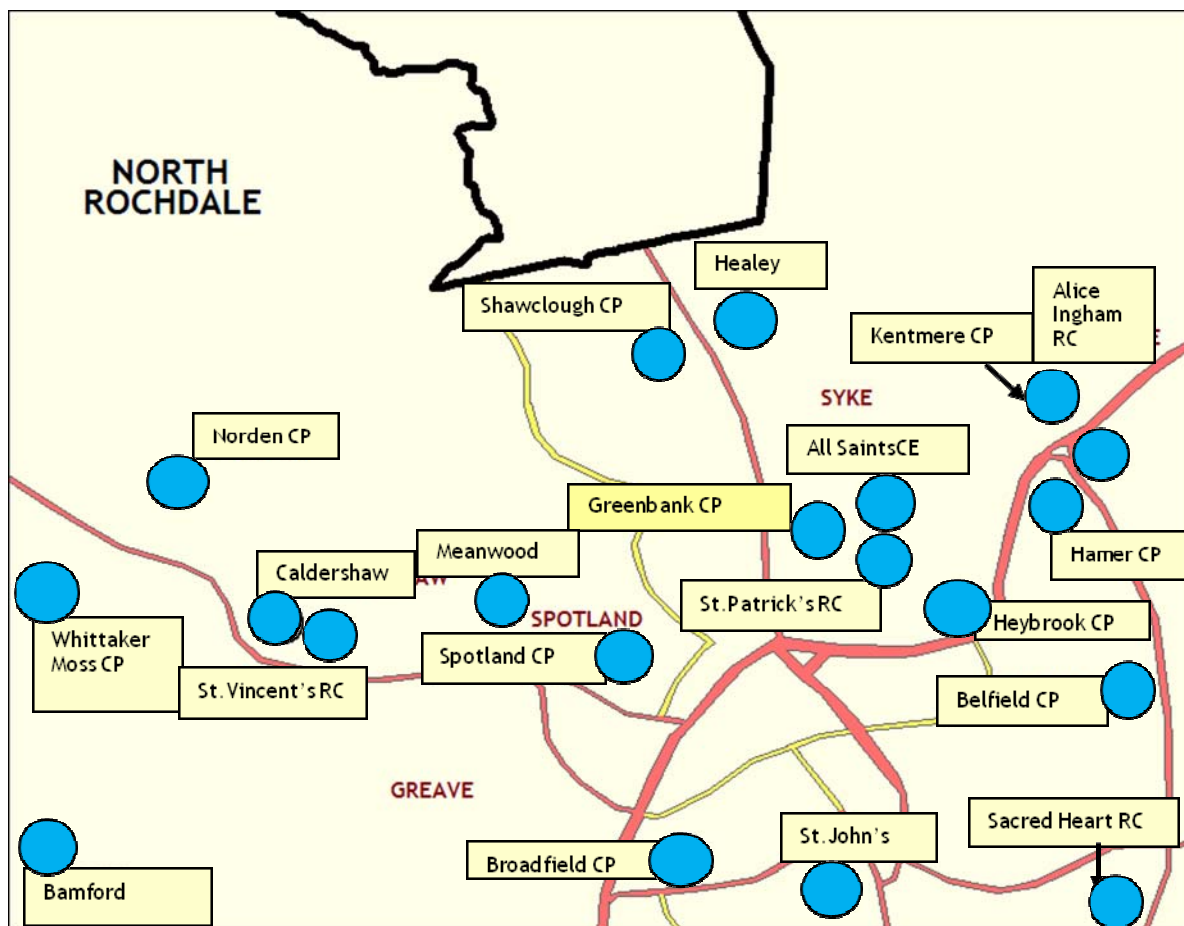
MIDDLETON TOWNSHIP																
DfE No	School	PAN	R	PAN	Y1	PAN	Y2	PAN	Y3	PAN	Y4	PAN	Y5	PAN	Y6	TOTAL
2041	Boarshaw	30	26	30	29	30	23	30	23	30	24	30	27	30	24	176
3513	Bowlee Park	60	71	60	62	60	58	60	61	60	40	60	49	60	44	385
2048	Hollin	30	30	30	28	30	30	30	24	30	21	30	30	30	24	187
2064	Parkfield	35	36	35	35	35	35	35	33	35	35	35	32	35	35	241
3016	Little Heaton CE	30	28	30	27	30	29	30	27	30	21	30	15	30	15	162
3321	Middleton Parish CE	30	31	30	31	30	30	30	30	30	29	35	30	35	30	211
	<i>vacancies</i>	215	6	215	6	215	10	215	18	215	45	220	37	220	48	170
5203	St John Fisher RC	30	30	30	29	30	30	30	28	30	30	30	30	30	24	201
3312	St Mary's RC, M'ton	45	46	45	53	45	55	45	27	45	48	45	34	60	45	308
3311	St Peter's RC	30	30	30	30	30	27	30	22	30	26	30	28	30	28	191
3319	St Thomas More RC	45	45	45	45	45	41	45	39	45	45	45	28	45	43	286
	<i>vacancies</i>	150	0	150	1	150	7	150	34	150	4	150	30	165	25	101
2039	Alkington	60	55	60	53	60	57	60	52	60	59	60	40	60	45	361
2047	Elm Wood	58	57	58	49	58	55	58	58	58	54	58	51	58	55	379
3011	St Gabriel's CE	30	25	30	24	30	23	30	29	30	20	30	18	30	24	163
3322	St Michael's CE A'ton	30	30	30	30	30	30	30	29	30	30	33	34	33	34	217
	<i>vacancies</i>	148	11	178	22	178	13	178	10	178	15	181	39	181	24	134
	<i>Middleton Total</i>	543	540	543	525	543	523	543	482	543	482	551	446	566	470	3468



PENNINE TOWNSHIP																
DfE No	School	PAN	R	PAN	Y1	PAN	Y2	PAN	Y3	PAN	Y4	PAN	Y5	PAN	Y6	TOTAL
2036	Littleborough	60	60	60	54	60	58	60	57	60	47	60	52	60	41	369
3013	Stansfield Hall CE	22	9	22	9	22	9	22	13	26	14	26	8	26	11	73
3306	Holy Trinity CE	22	19	22	27	22	30	22	20	22	16	22	15	22	20	147
3009	St Andrew's CE	30	25	30	22	30	27	35	28	35	24	35	19	35	30	175
5201	Smithy Bridge	60	59	60	59	60	60	60	59	60	57	60	57	60	59	410
5202	St James' CE	30	30	30	29	30	30	30	30	35	35	35	35	34	35	224
	<i>vacancies</i>		22		29		18		22		45		52		42	230
2043	Moorhouse	30	28	30	28	30	30	60	31	60	25	60	24	60	29	195
2044	Newhey	30	30	30	30	30	29	30	30	30	30	30	22	30	31	202
3323	Milnrow Parish CE	30	19	30	25	30	31	30	28	30	18	30	20	30	23	164
3325	St Thomas' CE	21	21	21	22	21	22	21	23	21	20	21	17	21	24	149
5200	Crossgates	36	36	36	35	36	37	36	36	36	36	36	36	36	36	252
	<i>vacancies</i>		13		8		1		31		18		4		38	113
3310	St Mary's RC L'boro	30	30	30	29	30	30	30	27	30	23	30	28	30	24	191
	<i>vacancies</i>		0		1		0		3		7		2		6	
	<i>Pennine Total</i>	<i>401</i>	<i>366</i>	<i>401</i>	<i>369</i>	<i>401</i>	<i>393</i>	<i>436</i>	<i>382</i>	<i>445</i>	<i>345</i>	<i>445</i>	<i>333</i>	<i>444</i>	<i>363</i>	<i>2551</i>



ROCHDALE TOWNSHIP																
DfE No	School	PAN	R	PAN	Y1	PAN	Y2	PAN	Y3	PAN	Y4	PAN	Y5	PAN	Y6	TOTAL
5205	Bamford F	45	45	45	45	45	45	45	45	45	43	45	42	45	45	310
2029	Whittaker Moss	35	35	35	37	35	35	35	34	35	33	35	32	35	34	240
2018	Norden	60	59	60	59	60	51	60	57	60	48	60	53	60	51	378
2027	Caldershaw	30	30	30	30	30	30	30	30	30	27	30	30	30	29	206
2015	Meanwood	60	61	60	59	60	58	60	50	60	40	60	47	60	45	360
2021	Spotland	60	59	60	54	60	48	60	39	60	54	60	55	60	48	357
<i>vacancies</i>		2		8		31		35		45		31		38		
2003	Shawclough	60	60	60	60	60	60	60	57	60	51	60	59	60	52	399
5204	Healey F	30	30	30	30	30	30	30	34	30	27	34	31	34	33	215
2006	Greenbank	60	56	60	57	60	51	60	57	60	48	60	40	60	53	362
3506	All Saints CE	30	30	30	29	30	29	34	30	34	27	34	25	34	22	192
2009	Heybrook	75	85	75	75	75	83	75	75	75	82	75	77	75	71	548
2028	Belfield	40	45	40	39	40	38	40	39	40	37	40	41	40	32	271
2067	Kentmere	45	44	45	37	45	39	45	32	45	45	45	37	45	36	270
2065	Hamer	38	45	38	38	38	33	38	39	38	40	38	38	38	26	259
<i>vacancies</i>		5		13		23		34		34		41		61		
2001	Broadfield	60	54	60	52	60	52	60	50	60	31	60	51	60	55	345
2004	Deeplish	45	46	45	50	45	44	45	45	45	45	45	43	45	44	317
2024	Lowerplace	60	60	60	60	60	59	60	53	60	59	60	56	60	58	405
3003	St Peter's CE	60	58	60	60	60	60	60	54	60	60	60	51	60	60	403
<i>vacancies</i>		8		8		10		23		30		26		8		113
2000	Brimrod	30	29	30	30	30	23	30	25	30	32	30	28	30	26	193
2025	Marland Hill	60	60	60	60	60	56	60	60	60	41	50	48	50	42	367
2032	Ashfield Valley	30	30	30	30	30	23	30	29	30	29	30	29	30	27	197
<i>vacancies</i>		1		0		16		6		20		5		15		
3511	Sandbrook	60	60	60	60	60	57	60	46	60	55	60	37	60	39	354
3004	St Mary's CE	30	30	30	30	30	28	30	30	30	25	30	31	30	32	206
<i>vacancies</i>		0		0		5		14		10		23		21		73
2002	Castleton	30	33	30	35	30	32	30	29	30	26	45	20	45	29	204
3002	St Edward's CE	50	47	50	46	50	48	50	47	50	48	50	44	50	49	329
<i>vacancies</i>		3		6		2		4		6		31		17		
3007	St John's CE T'ham	10	10	15	15	10	14	10	10	10	9	10	13	10	4	75
<i>vacancies</i>		0		0		0		0		1		0		6		
3509	Alice Ingham RC	24	23	24	26	24	26	24	19	24	23	24	19	24	18	154
3507	Holy Family RC	30	30	30	30	30	30	30	31	30	23	30	29	30	23	196
3505	Sacred Heart RC	30	30	30	30	30	30	30	29	34	30	34	29	34	28	206
3500	St Gabriel's RC	30	26	30	31	30	28	30	20	30	22	30	23	30	32	182
3501	St John's RC	30	37	30	31	30	30	30	26	30	30	30	36	30	33	223
3503	St Patrick's RC	45	45	40	42	40	46	40	42	45	41	45	40	45	45	301
3508	St Vincent's RC	60	60	60	60	60	60	60	59	60	63	60	61	60	58	421
<i>vacancies</i>		5		0		2		21		24		23		21		
Rochdale Total		1442	1452	1442	1427	1437	1376	1441	1322	1450	1294	1459	1295	1459	1279	9445



APPENDIX SIX- Secondary Schools Number on Roll and Admission Capacity

DfE No	Township / school	Y7		Y8		Y9		Y10		Y11		Total
		PAN	NOR	PAN	NOR	PAN	NOR	PAN	NOR	PAN	NOR	
Pennine Township												
5401	Hollingworth (F)	230	237	230	258	230	261	230	244	210	231	1231
5400	Wardle (F)	240	228	240	200	240	203	240	185	240	173	989
	<i>vacancies</i>		12		40		37		55		67	
Rochdale Township												
4612	St.Cuthbert's RC	270	268	270	264	270	269	270	245	270	247	1293
4088	Matthew Moss	210	175	180	174	180	177	180	178	180	179	883
4089	Oulder Hill	300	222	300	236	240	222	240	228	240	241	1149
4086	Falinge Park	240	235	240	227	240	233	240	231	240	238	1164
5402	Kingsway Park	240	186	240	191	240	233	240	266	240	262	1138
	<i>vacancies</i>		174		138		36		48		26	422
Middleton Township												
4091	Middleton Tech	210	207	210	218	210	210	210	209	210	204	1048
4611	Cardinal LangleyRC	180	186	180	186	180	180	180	174	180	187	913
	St.Anne's Academy	150	104	150	140	150	123	150	92	150	84	543
	<i>vacancies</i>		46		10		27		58		72	
Heywood Township												
4083	Siddal Moor	210	207	210	202	210	206	210	240	210	278	1133
4801	HolyFamilyRC&CE	120	122	120	121	120	115	120	121	120	96	575
	<i>vacancies</i>		3		8		9		0		84	
Boroughwide Secondary Totals		2600	2377	2570	2417	2510	2432	2510	2413	2490	2420	12059

SIXTH FORM

School	Y12	Y13
5400 Wardle (F)	44	56
4612 St.Cuthbert's RC	58	51
4089 Oulder Hill	0	45
4091 Middleton Tech	25	30
4611 Cardinal LangleyRC	90	65
St.Anne's Academy	33	57
Total sixth form numbers	250	304

=No vacancies in Year Group
 = Vacancies in Year Group