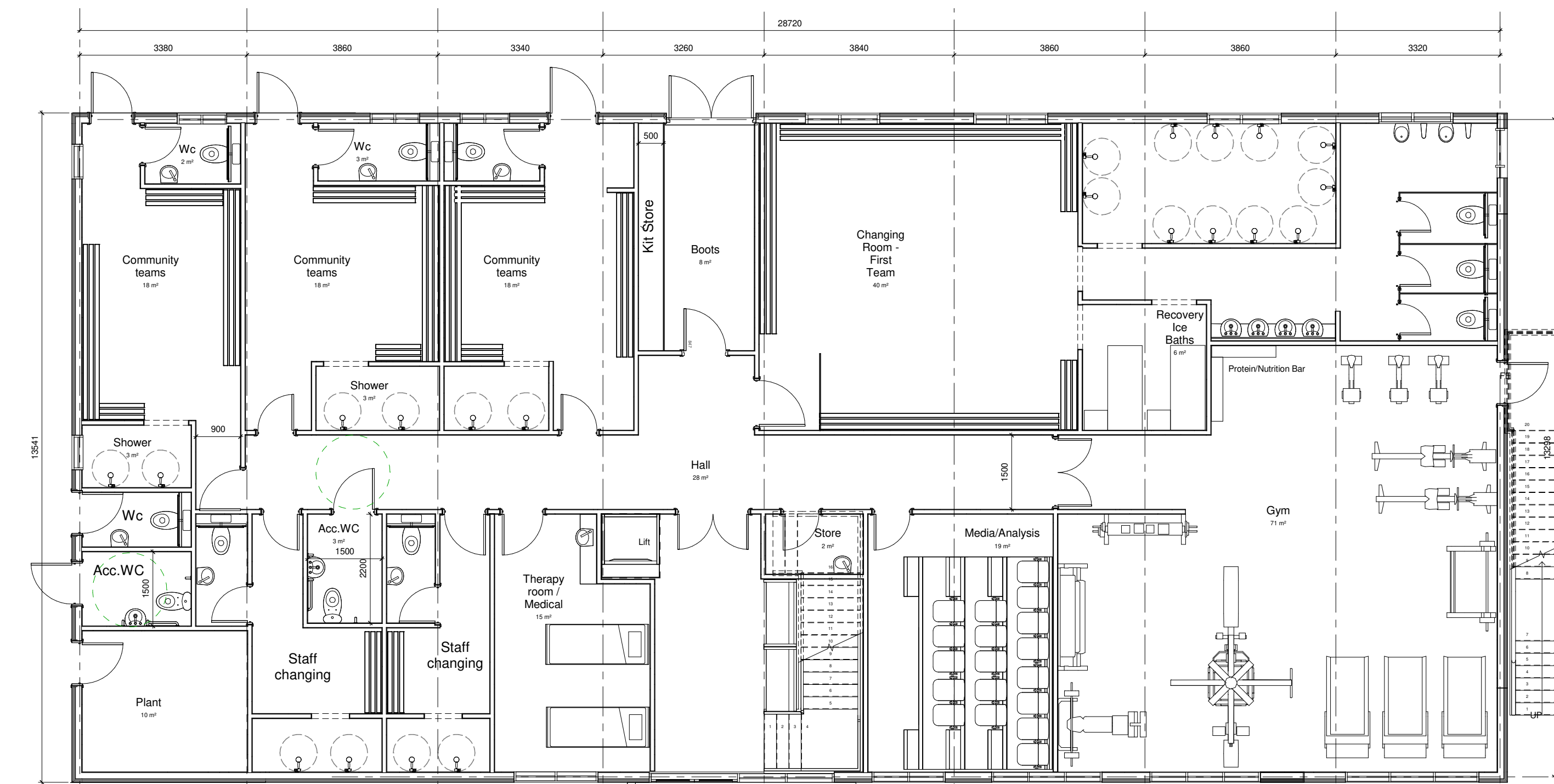


Football Club Building and Facilities

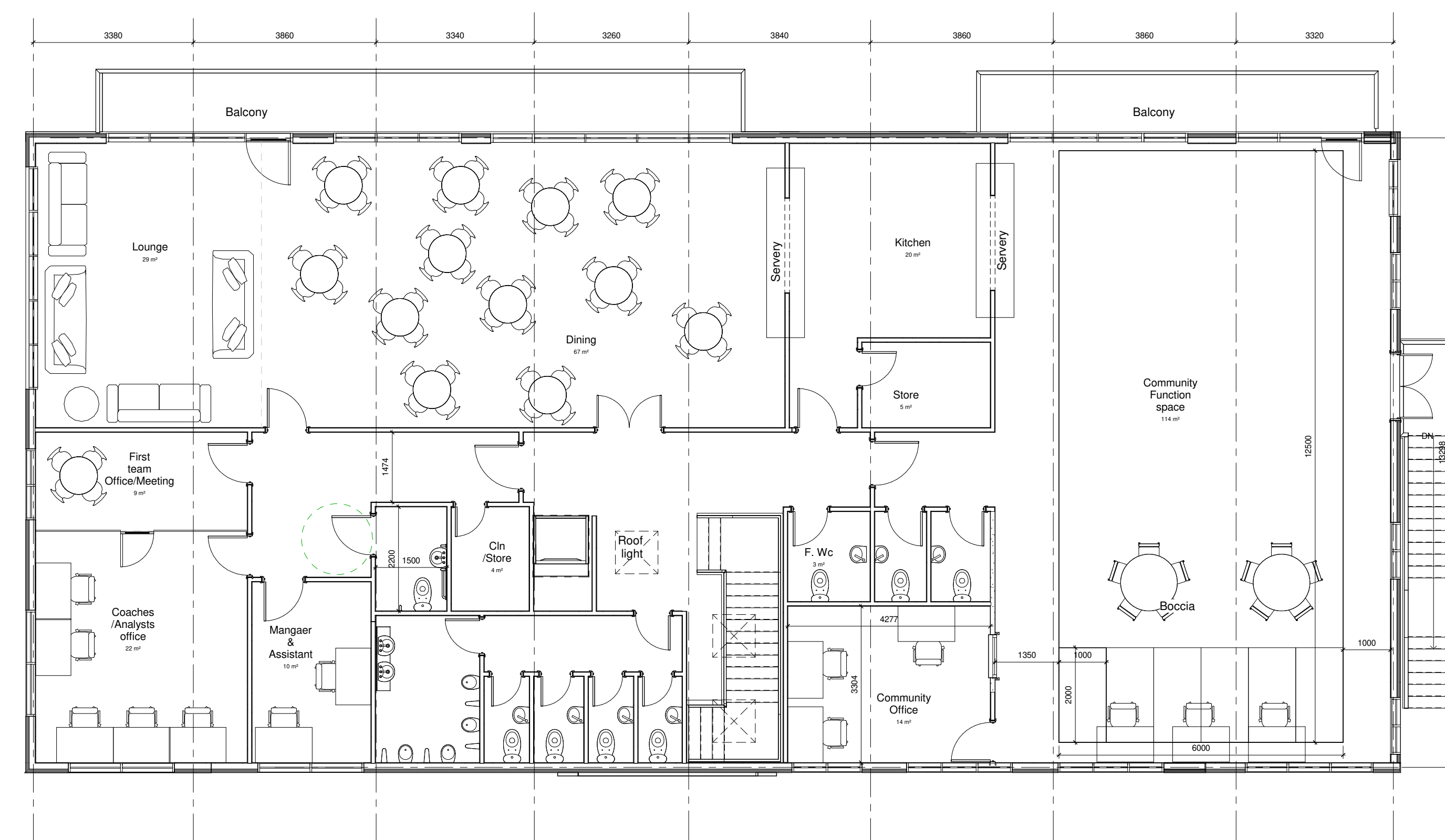
The proposals include a Football Hub on one half of the site which would host Rochdale AFC's First Team while also serving the wider community through Rochdale AFC Community Trust. Plans for this area include:

A two-storey building providing community offices, changing and social space, alongside first team and elite changing facilities, gym, media, offices and recreation facilities.

One full-size 3G artificial grass pitch for Rochdale AFC community Trust teams and programmes. A grass training area for Rochdale AFC elite use. A retained and improved community grass football pitch.



Ground Floor
1:50



First Floor
1:50

The proposed scheme includes first-team changing facilities, gym, recovery ice baths, media/analysis room, medical and therapy space, staff changing, offices, lounge, dining area, kitchen, community office and a large community function space.

Externally, the design includes Rochdale AFC branding, balconies and a mix of timber-style cladding, blue detailing and contemporary finishes. Modulek also highlights environmental benefits, with A+ EPC performance as standard and potential for net zero operational running costs through solar PV or renewable energy systems.



ROCHDALE
BIRTHPLACE OF CO-OPERATION



Rochdale AFC
Community Trust

yourtrust

pozzoni
architecture

ModuleK
Intelligent, Sustainable Buildings, FAST

re-form
landscape architecture

OBI
SPORTS

abacus
Part of the Contollo Group

FMG
Sport & Leisure consultancy

enabl